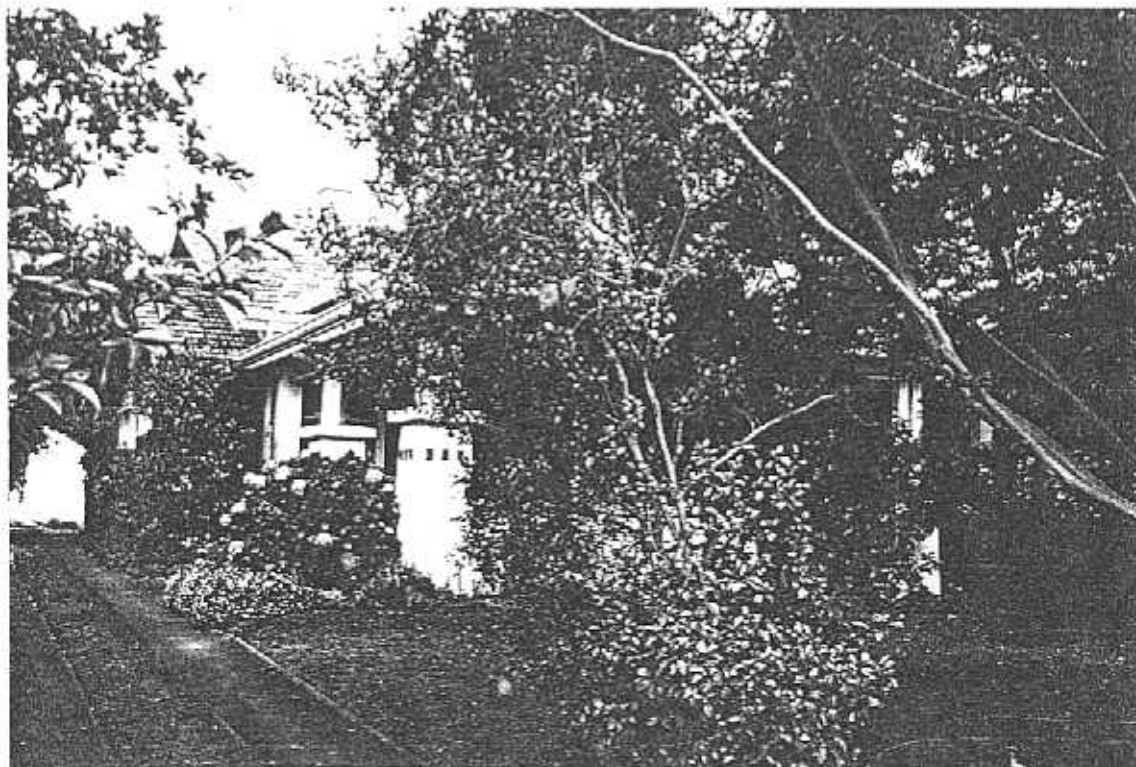


**NEWTOWN URBAN CONSERVATION STUDY. - 'C' CITATIONS. Ref: 267**  
 Richard Peterson Architect & Conservation Consultant. 1997.

<b>NAME:</b> —			
<b>ADDRESS:</b> 49 Virginia Street			
<b>USE:</b> House			
<b>SIGNIFICANT DATE:</b>		<b>CONSTRUCTION DATE:</b> 1917	
<b>DESIGNER:</b> —		<b>SOURCE:</b> 1	
<b>CRITERIA:</b> H1; Ar1		<b>BUILDER:</b>	
		<b>HISTORIC THEME:</b> 2.3	
<b>DESCRIPTION:</b>	<b>STYLE:</b> Bungalow	<b>STORIES:</b> 2	<b>DETACHED.</b>
<b>MATERIALS:</b>	<b>WALLS:</b> Brick	<b>ROOF:</b> Tile	<b>STRUCTURE:</b> Lb
<b>CONDITION:</b> Very good	<b>INTACTNESS:</b> Very good	<b>THREATS:</b> —	
<b>SIGNIFICANT INTACT ELEMENTS:</b>			
FORM. FACADE. VERANDAH. ROOF FORM. ROOF DECORATION. VERANDAH DECORATION. CHIMNEYS. DOOR. WINDOWS. OUTBUILDING. CONTEXT Nos: 58 & 60.			
<b>SIGNIFICANCE:</b>			
<b>TYPE:</b>	HISTORICAL. ARCHITECTURAL.		
<b>LEVEL:</b>	LOCAL.		
<b>DESIGNATION EXISTING:</b>	PLANNING SCHEME.		
<b>RECOMMENDED CONTROL:</b>	PLANNING SCHEME.		
<b>OBSCURED.</b>	<b>SURVEY:</b> RP	<b>DATE:</b> 30.3.1997	<b>NEGS:</b> 10.36A;1281.32



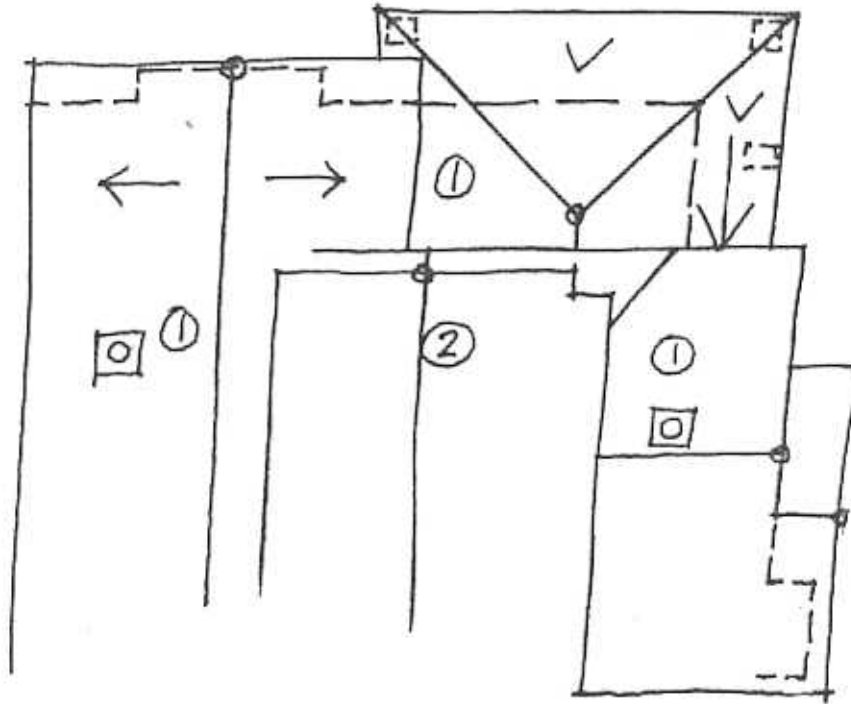
267

VIRGINIA STREET

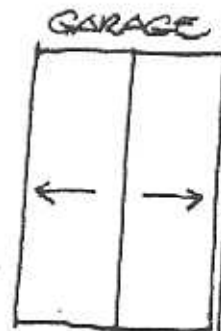
No 51

No 49

No 4  
265  
LAUREL



RP. 30.3.97 NTS.



**HISTORY:** This brick house was built in 1917 and belonged to Stanley Richardson, who still lived there in 1925. The house was never described but the land was originally 60' x 203'7", then, soon after the house was built, Richardson bought more land making it 60' x 230'. By 1925 the land was reduced again to measure 60' x 212'.<sup>1</sup>

**VISUAL DESCRIPTION:** A complex triple-fronted red brick gable-roofed Californian Bungalow with an attic. It has a hipped roof in the angle between two major gables: one at right and the other at left side rear, nested with a minor gable. The attic gable faces at centre. Under the hip is the verandah around the angle. It is supported on post-pairs with a rendered brick balustrade and piers with plate-tops and triple-header decoration.

Chimneys are similar, with a brick frieze course and terra-cotta pots. Roofing is unglazed terracotta Marsilles tiles with cresting and finials. At the gables are rectangular bay windows. There is a timber garage contemporary with the house.

**SIGNIFICANCE:** A very early, characteristic yet complex, brick Californian Bungalow with an attic, built in 1917. It is architecturally significant locally as a pioneering, yet representative, example of this domestic style, later to become so popular in Newtown. It is historically significant in embodying forward-looking family life in Newtown in the last years of the Great War and as evidence that the building trade continued during that period.

**INTACTNESS:** Very good, but the high fence is not appropriate.

**CONDITIONS & THREATS:** Very good.

---

<sup>1</sup> City of Newtown and Chilwell Ratebooks.