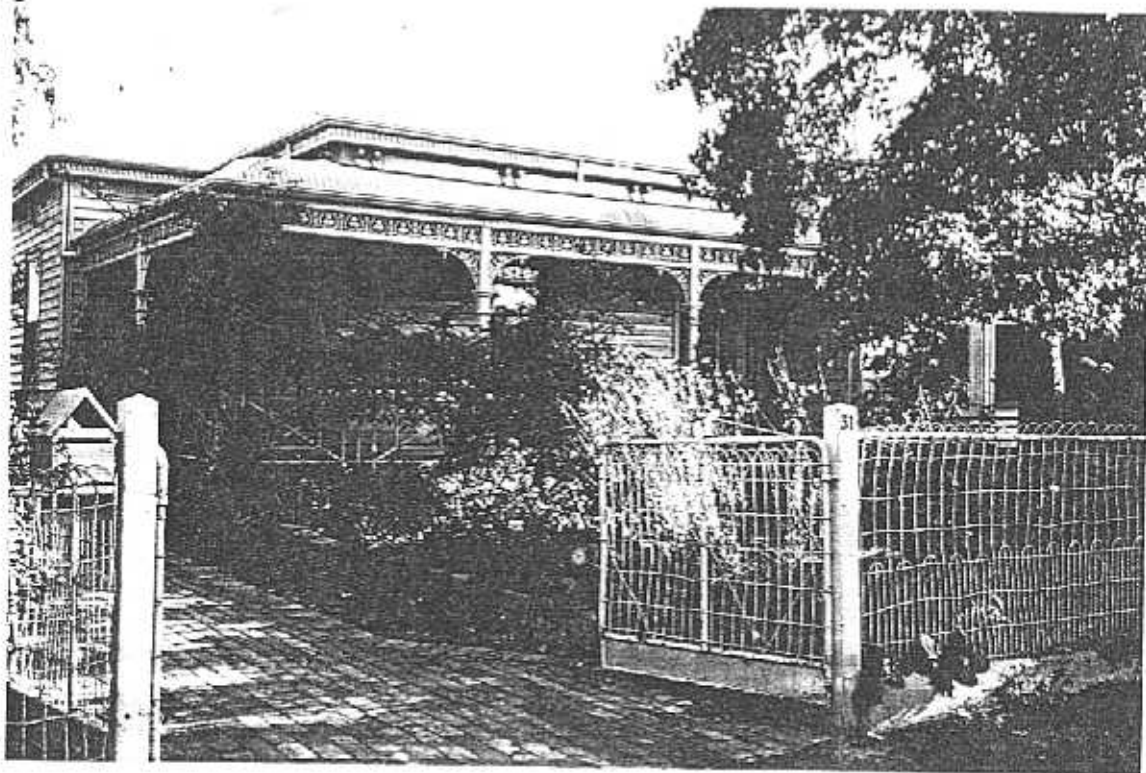
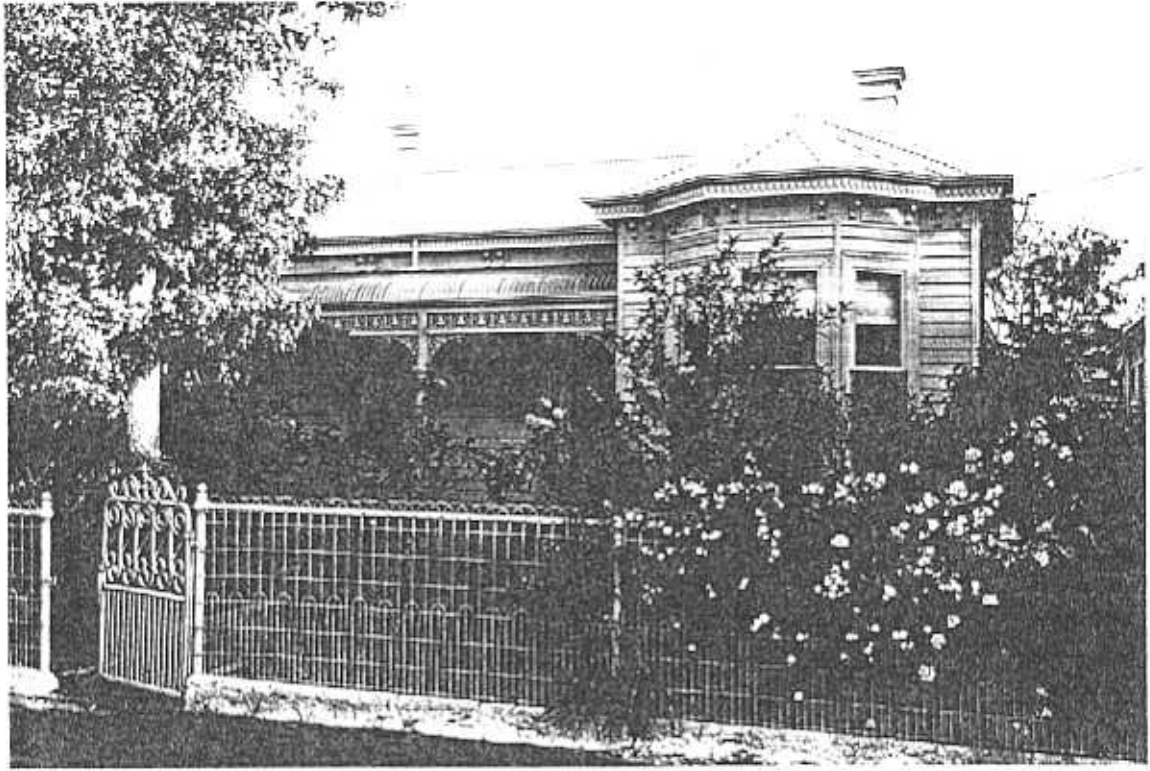


**NEWTOWN URBAN CONSERVATION STUDY. - 'C' CITATIONS. Ref: 258**

Richard Peterson Architect & Conservation Consultant. 1997.

<b>NAME:</b> —	
<b>FORMER NAMES:</b>	Nar-be-thong; Marbethong; Montrose
<b>ADDRESS:</b>	31 Virginia Street
<b>USE:</b> House	
<b>SIGNIFICANT DATE:</b>	<b>CONSTRUCTION DATE:</b> c1880s <b>SOURCE:</b> Visual
<b>DESIGNER:</b> —	<b>BUILDER:</b> —
<b>CRITERIA:</b> H1; Ar1	<b>HISTORIC THEME:</b> 2.3
<b>DESCRIPTION:</b> <b>STYLE:</b> Italianate	<b>STORIES:</b> 1 <b>DETACHED.</b>
<b>MATERIALS:</b> <b>WALLS:</b> Timber	<b>ROOF:</b> Zincalume <b>STRUCTURE:</b> Stud
<b>CONDITION:</b> Very good	<b>INTACTNESS:</b> Very good <b>THREATS:</b> —
<b>SIGNIFICANT INTACT ELEMENTS:</b> FORM. FACADE. VERANDAH. ROOF FORM. EAVES DECORATION. VERANDAH DECORATION. CHIMNEYS. DOOR. WINDOWS. FENCES. GATES. HEDGE. Side. CONTEXT Nos: 28 & 30.	
<b>SIGNIFICANCE:</b>	
<b>TYPE:</b>	HISTORICAL. ARCHITECTURAL.
<b>LEVEL:</b>	LOCAL.
<b>DESIGNATION EXISTING</b>	PLANNING SCHEME.
<b>RECOMMENDED CONTROL:</b>	PLANNING SCHEME.
SURVEY: RP DATE: 29.3.1997 NEGS: 10.25, 26; 1281.21 & 22	





VIRGINIA STREET

No 33

(260)

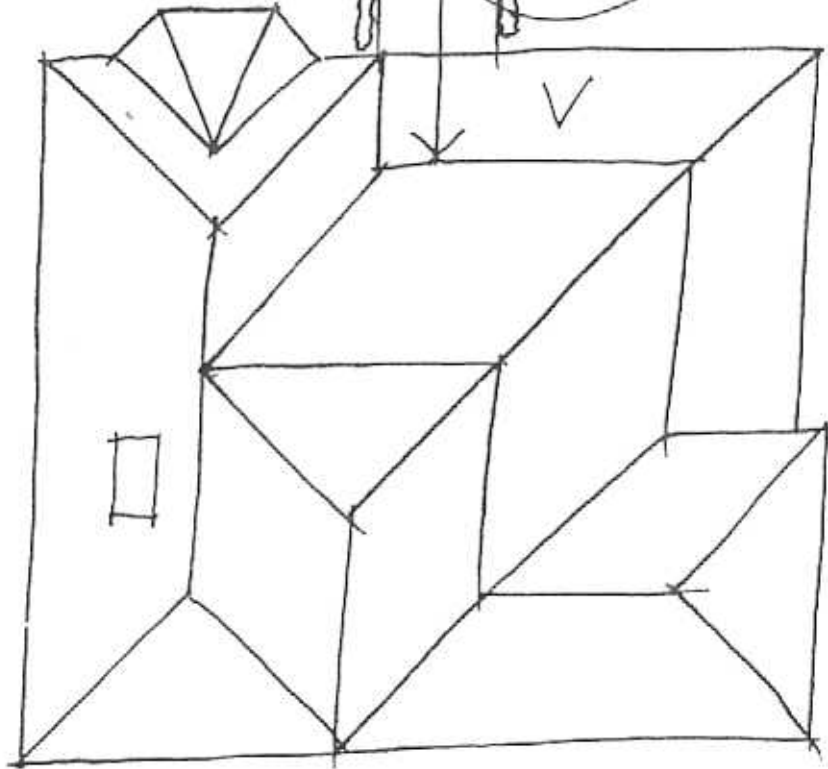
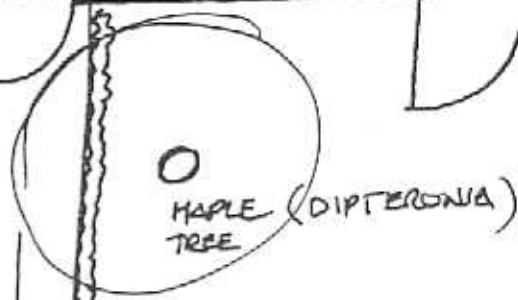
No 31

LAVENDER HEDGES  
ON STANDARD ACRES

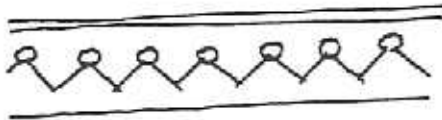
No 27

(256)

HEDGE & CHAIN LINK FENCE



RP 29.3.97 NTS.



FACIA DETAIL.

**HISTORY:** Built in 1884, this timber and 'plastered' house had seven rooms with a kitchen and bathroom and was owned and occupied by Charles Pawsey, a draper. The following year the house was described as having 8 rooms, although the kitchen and bathroom were not described. At the turn of the century he called the house Nar-Be-Thong. By 1910 the house, now called Marbethong, was owned by his widow, Mary Pawsey, and rented to Robert Scott, a teacher. A few years later Pawsey sold the house to the Meakin family who moved in naming it Montrose. They were still there in 1925 when the land was measured at 63' x 229'.<sup>1</sup>

**VISUAL DESCRIPTION:** A triple-fronted timber Italianate house, with a hipped roof. The left side rear and right bay are set forward. At right is a canted bay expressed at the roof. The bull-nosed verandah returns around the angle. It has brackets and valance in cast-iron lace over a rail, with Doric timber posts. The fascia has fretwork spear-head decoration (refer: detail), supported on bracket pairs, with panels between. Chimneys are rendered with Classical moulds. The entrance has side and fanlights, panelled door and flyscreen door (possibly original?).

There is a woven wire and metal pipe frame fence and concrete base and metal ribbon curlicue gates. At side is a chain-link fence within a hedge. At the entrance path are lavender hedges and standard roses and a mature maple (*Dipteronia*) tree.

**SIGNIFICANCE:** A characteristic timber Italianate house built in 1884, with several contextual elements surviving, including fences, gates, mature tree and garden layout. It is architecturally significant as representative of this domestic style locally and historically in embodying small business family life in Newtown in the mid 1880s.

**INTACTNESS:** Very good. The balustrade is later and the verandah floor appears to have been replaced with a concrete slab. The hedges may not be original but are appropriate and the layout may be early.

**CONDITIONS & THREATS:** Very good.

---

<sup>1</sup> City of Newtown and Chilwell Ratebooks.