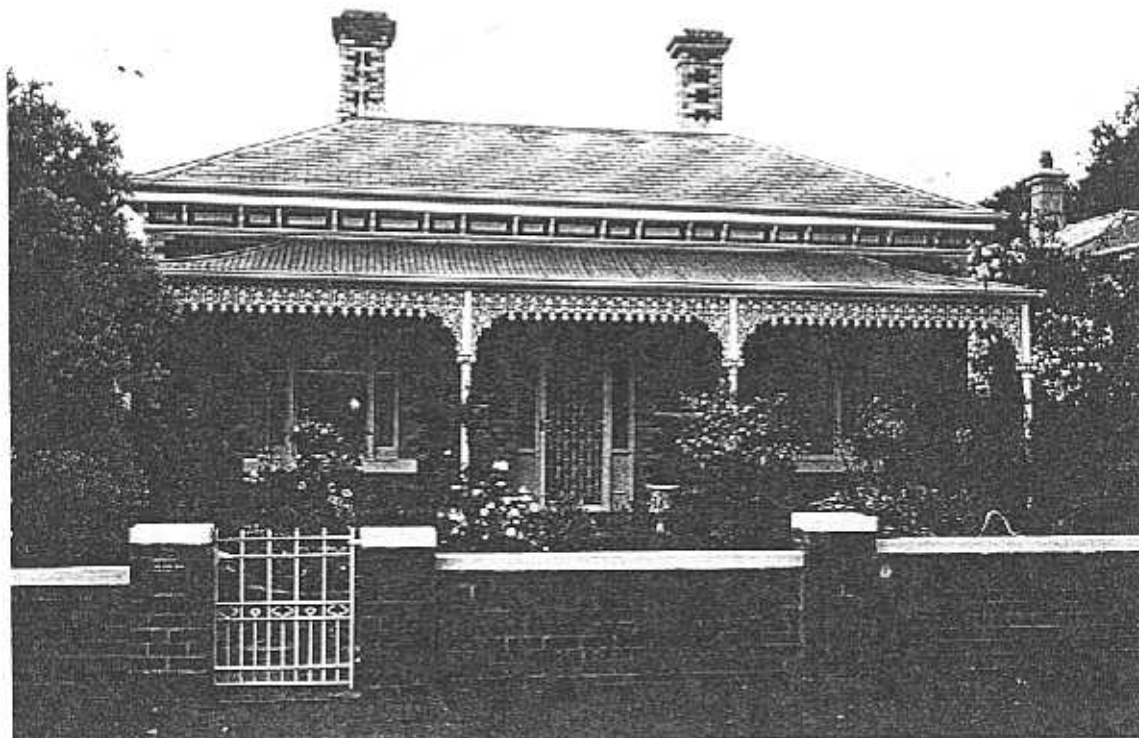


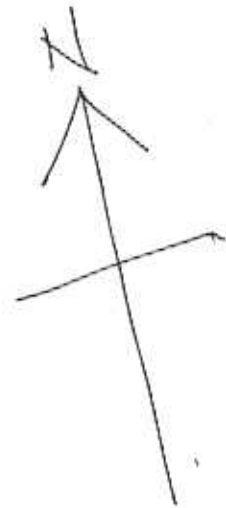
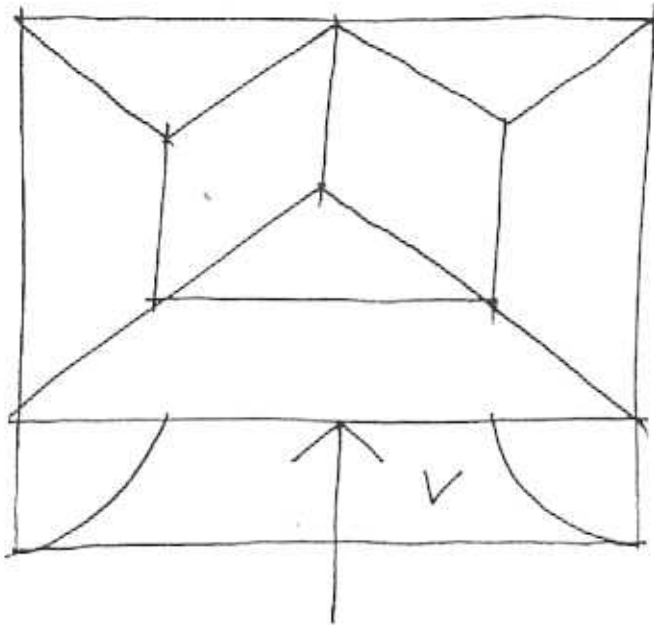
**NEWTOWN URBAN CONSERVATION STUDY. - 'C' CITATIONS. Ref: 251**

Richard Peterson Architect & Conservation Consultant. 1997.

<b>NAME:</b> Corona			
<b>ADDRESS:</b> 15 Virginia Street			
<b>USE:</b> House			
<b>SIGNIFICANT DATE:</b>		<b>CONSTRUCTION DATE:</b> 1884	<b>SOURCE:</b> 1
<b>DESIGNER:</b> —		<b>BUILDER:</b> —	
<b>CRITERIA:</b> H1; Ar1		<b>HISTORIC THEME:</b> 2.3	
<b>DESCRIPTION:</b>	<b>STYLE:</b> Italianate	<b>STORIES:</b> 1	<b>DETACHED.</b>
<b>MATERIALS:</b>	<b>WALLS:</b> Brick	<b>ROOF:</b> Slate	<b>STRUCTURE:</b> Lb
<b>CONDITION:</b> Excellent	<b>INTACTNESS:</b> Excellent	<b>THREATS:</b> —	
<b>SIGNIFICANT INTACT ELEMENTS:</b>			
MATERIALS. Slate. ROOF DECORATION. Cresting & finials. VERANDAH DECORATION. CHIMNEYS. WALL DECORATION. Tuck-pointing. DOOR. WINDOWS. PAINTWORK SCHEME. NAMEPLATE. UNPAINTED FINISH. Walls. GATE. CONTEXT No: 16.			
<b>SIGNIFICANCE:</b>			
<b>TYPE:</b>	HISTORICAL. ARCHITECTURAL.		
<b>LEVEL:</b>	LOCAL.		
<b>DESIGNATION EXISTING:</b>	PLANNING SCHEME.		
<b>RECOMMENDED CONTROL:</b>	PLANNING SCHEME.		
<b>SURVEY:</b> RP		<b>DATE:</b> 29.3.1997	<b>NEGS:</b> 10.17 & 1281.13



251



(249)

No 13

No 15

(253)

No 17

GATE

VIRGINIA STREET

RP 29.3.97 NTS

**HISTORY:** This seven-room brick building was built in 1884 on land with a 40' frontage and owned by Henry Drew. It was occupied by John Tait, an accountant, who continued to live there until c1905. At about this time Mary Drew was listed as its owner, and she moved in a few years later naming the house Corona. In 1925 the house was owned by Annie Drew and tenanted by Edwin Drew, a painter. Still described as a brick cottage, the land measurements were 41' x 229'.<sup>1</sup>

**VISUAL DESCRIPTION:** A symmetrical double-fronted brick late Italianate house with a hipped roof. The concave hipped verandah extends across, with cast-iron lace valance and brackets and cast-iron columns. These are composite with barley sugar shafts and coin-mould over. Verandah pavement is chequerboard diamond pantiles with bluestone edge.

Brickwork is bichromatic, brown with cream facings, tuckpointed on rockface bluestone base. Chimneys have deep Classical moulds. There are fine wrought-iron finials and cresting. The frieze has unusual maple-leaf motif decorative panels, alternatively wide and narrow between ogee brackets with drops.

Windows are tripartite. The entrance has Edwardian leadlight side and fan-lights with a panelled door and an unusual fine Art Nouveau glass nameplate. The c1940 fence has an unusual Art Nouveau wrought-iron gate.

**SIGNIFICANCE:** A characteristic and particularly intact symmetrical late Italianate brick house, built in 1884, but with some fine and unusual elements in c1905, from a new owner. It is architecturally significant as representative of the Italianate domestic manner, but also for the early twentieth century elements including: the nameplate, glass and gate. It is historically interesting in embodying two periods of life in Newtown, both the mid 1880s and early twentieth century, both prosperous.

**INTACTNESS:** Excellent

**CONDITIONS & THREATS:** Excellent.

---

<sup>1</sup> City of Newtown and Chilwell Ratebooks.