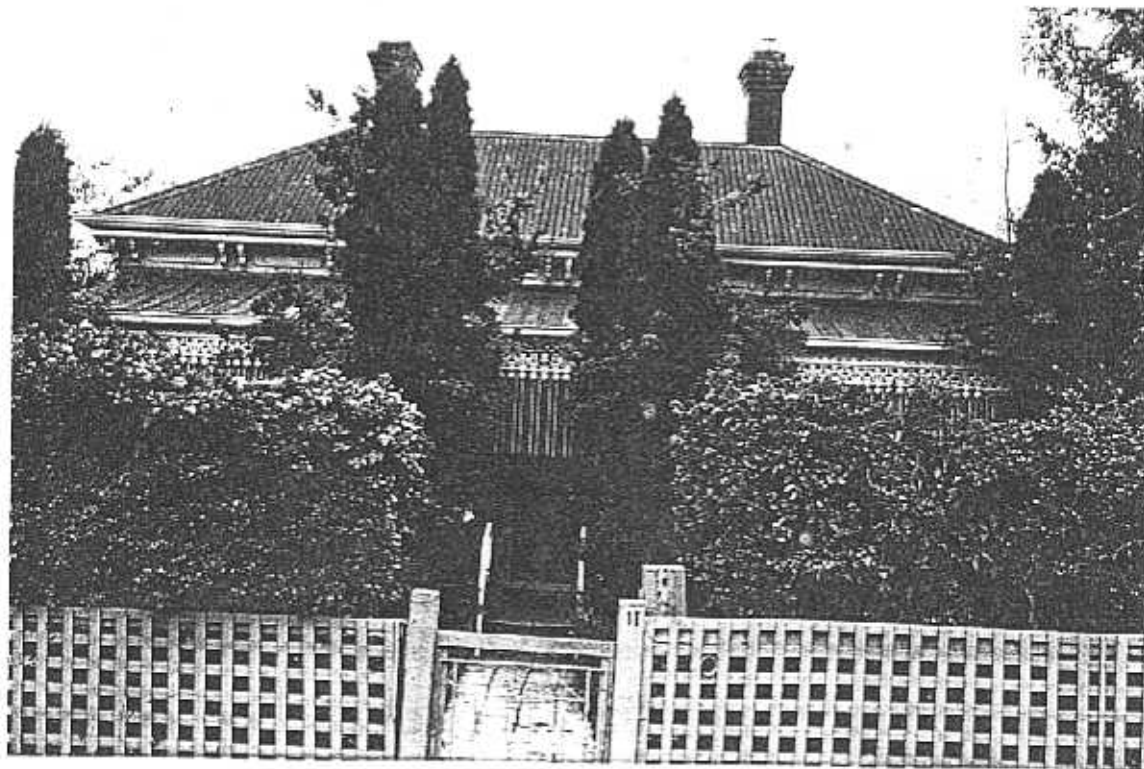


**NEWTOWN URBAN CONSERVATION STUDY. - 'C' CITATIONS. Ref: 244**

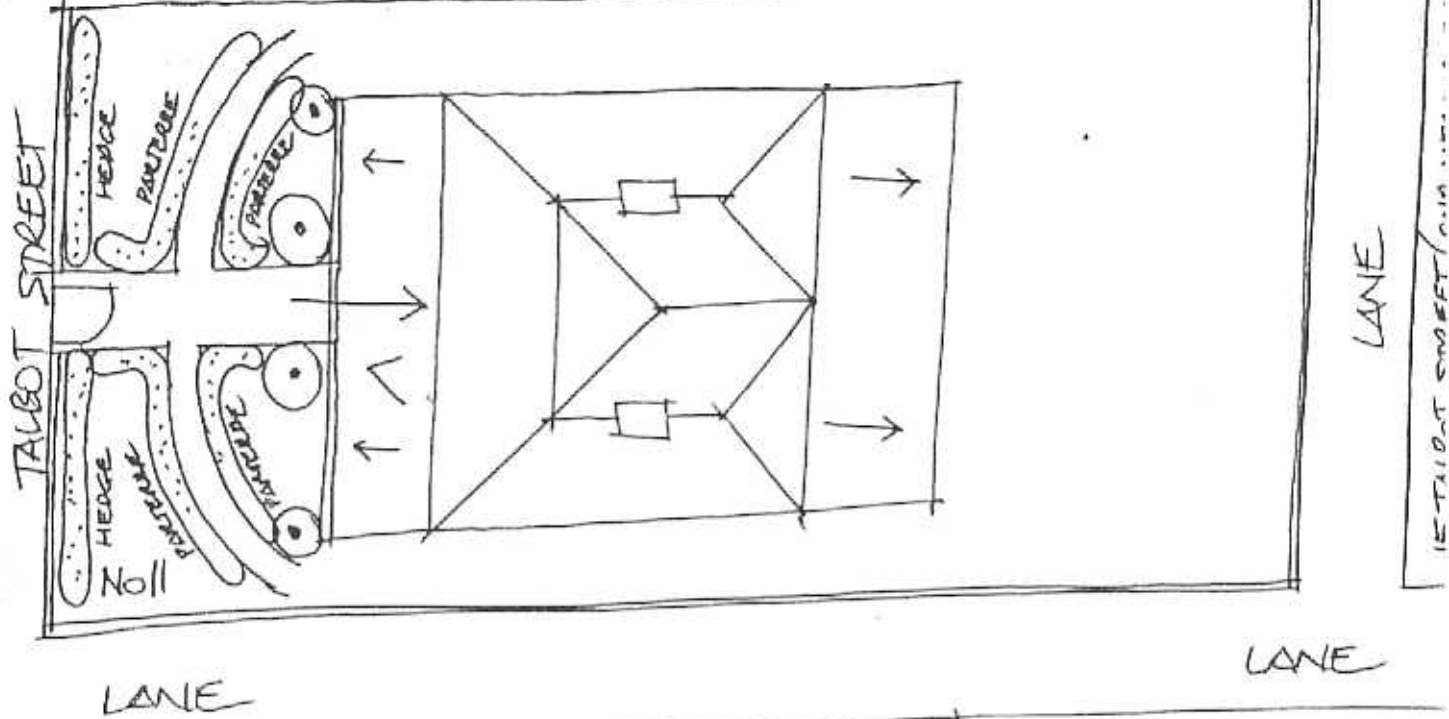
Richard Peterson Architect & Conservation Consultant. 1997.

<b>NAME:</b> Keewong	
<b>ADDRESS:</b> 11 Talbot Street	
<b>USE:</b> House	
<b>SIGNIFICANT DATE:</b>	<b>CONSTRUCTION DATE:</b> c1875 <b>SOURCE:</b> Visual
<b>DESIGNER:</b> —	<b>BUILDER:</b> —
<b>CRITERIA:</b> H1; Ar1	<b>HISTORIC THEME:</b> 2.3
<b>DESCRIPTION:</b>	<b>STYLE:</b> Italianate <b>STORIES:</b> 1 <b>DETACHED.</b>
<b>MATERIALS:</b>	<b>WALLS:</b> Timber <b>ROOF:</b> Iron <b>STRUCTURE:</b> Stud
<b>CONDITION:</b> Fair	<b>INTACTNESS:</b> Excellent <b>THREATS:</b> Maintenance
<b>SIGNIFICANT INTACT ELEMENTS:</b> MATERIALS. Sheet metal roofing. FORM. FACADE. VERANDAH. Blinds. ROOF FORM. EAVES DECORATION. VERANDAH DECORATION. CHIMNEYS. DOOR. WINDOWS. FENCES. HEDGES. GARDEN. Layout. TREES.	
<b>SIGNIFICANCE:</b>	
<b>TYPE:</b>	HISTORICAL. ARCHITECTURAL.
<b>LEVEL:</b>	LOCAL.
<b>DESIGNATION EXISTING:</b>	PLANNING SCHEME.
<b>RECOMMENDED CONTROL:</b>	PLANNING SCHEME.
<b>SURVEY:</b> RP	<b>DATE:</b> 29.3.1997
	<b>NEGS:</b> 10.8, 10; 1280.38; 1281.2 & 3

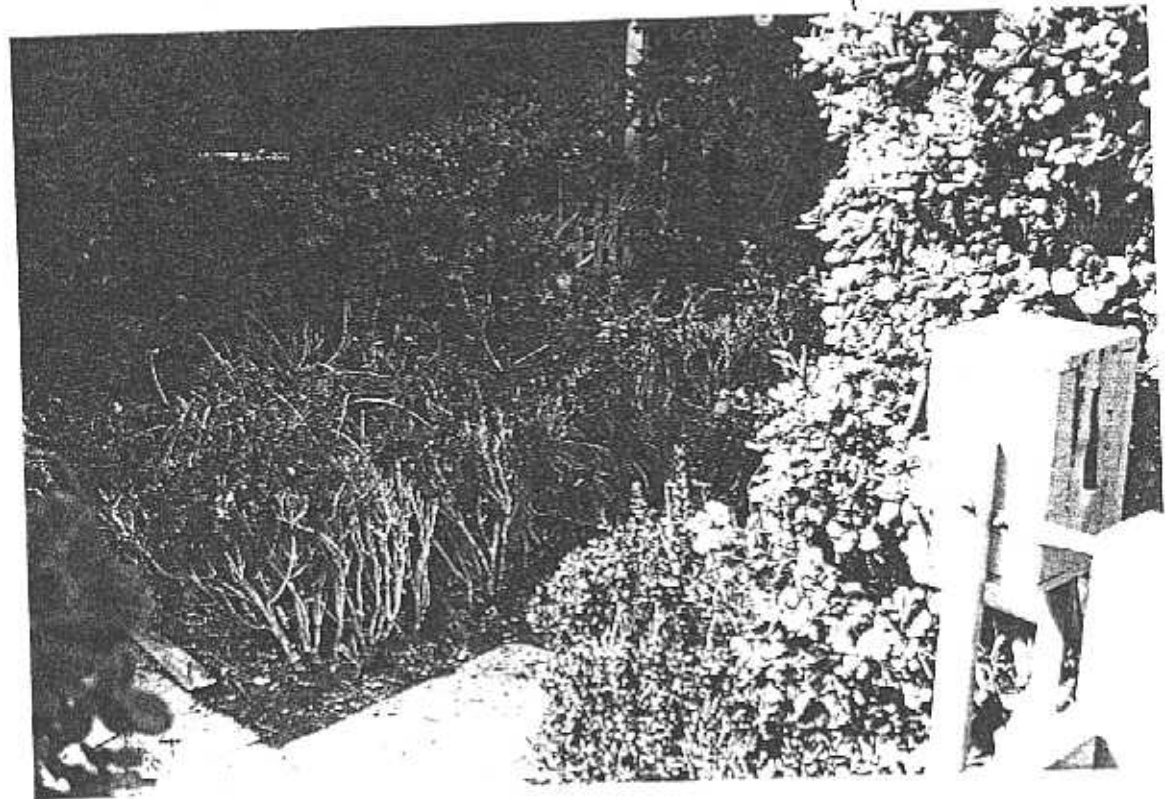
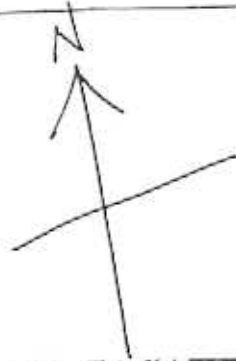


244

No 9 (243)



RP. 29.3.97 NTS



Richard Peterson Architect & Conservation Consultant 1997.

**HISTORY:** The house at 11 Talbot Street was constructed for Richard Edgar. Described as a 'gentleman', Edgar lived at Keewong as the house was known in 1911, until Lydia Edgar was nominated the owner and occupier in 1930.<sup>1</sup>

**VISUAL DESCRIPTION:** A double-fronted symmetrical Italianate timber house. The concave skillion verandah extends around the front. It has rare surviving tray and roll sheet metal cladding (this should be inspected closely to confirm its significance), with a fretwork apron and cast-iron lace valance and brackets, timber posts and rare surviving canvas blinds.

The frieze has turned spindle brackets with lozenges and panels between. Chimneys are Venetian brick. Windows are tripartite and the entrance has side and fanlights. The garden has cypresses at the entrance and a *Pittosporum* hedge, with a surviving cruciform garden layout, edged with a low privet *Ligustrum* parterre hedges.

**SIGNIFICANCE:** A characteristic symmetrical Italianate timber house, and its context surviving remarkably intact and evocative. The significant contextual elements include: the garden layout configuration, edging tiles, parterres, trees and hedge. (Further research may establish the garden to be of Regional significance). It is architecturally significant locally as representative of this domestic style in its context and historically as a most evocative embodiment of life in Newtown 120 years ago.

**INTACTNESS:** Excellent. A remarkable survival.

**CONDITIONS & THREATS:** Fair.

---

<sup>1</sup> City of Newtown and Chilwell Rate Books