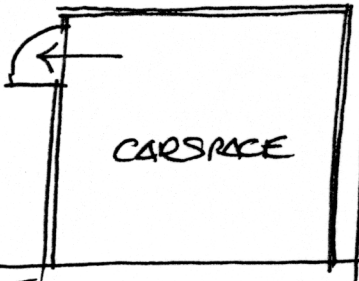
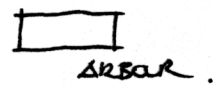
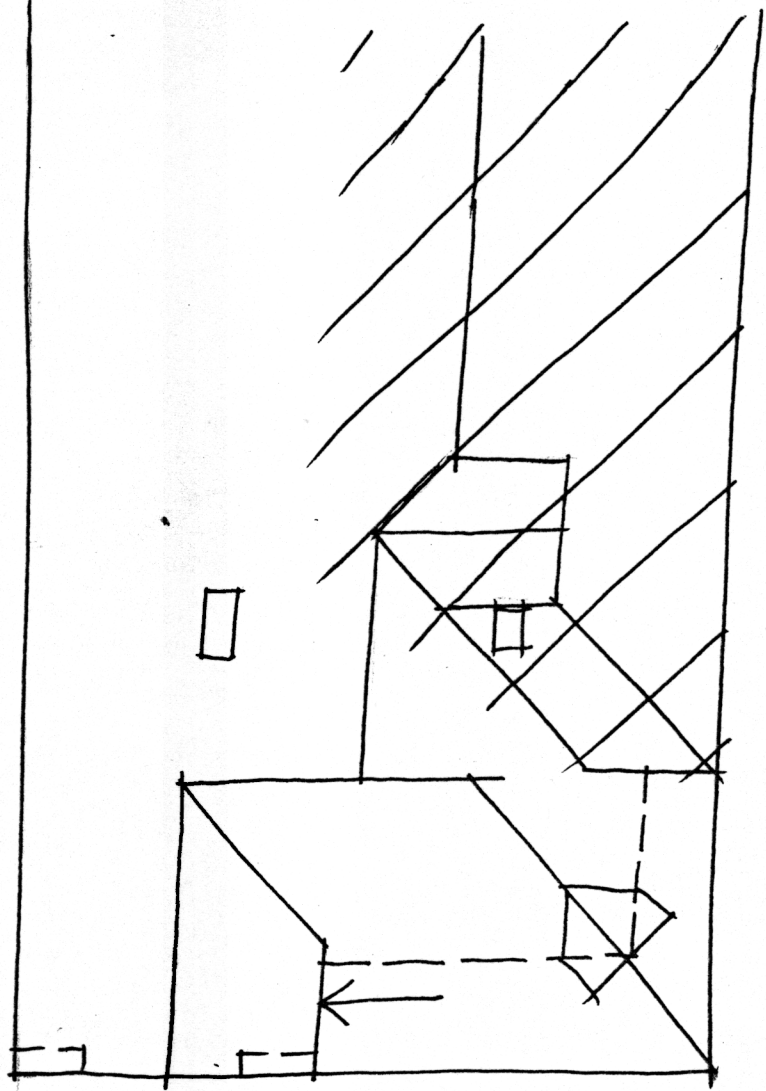


NEWTOWN URBAN CONSERVATION STUDY. - 'C' CITATIONS. Ref: 219

Richard Peterson Architect & Conservation Consultant. 1997.

NAME: —		
ADDRESS: 62 Skene Street		
USE: House		
SIGNIFICANT DATE:	CONSTRUCTION DATE: 1910	SOURCE: 1
ALTERATIONS/ADDITIONS.	DATE: c1980s?	SOURCE: Visual
DESIGNER: —	BUILDER: —	
CRITERIA: H1; Ar1	-HISTORIC THEME: 2.3	
DESCRIPTION:	STYLE: Edwardian	STORIES: 2
	DETACHED.	
MATERIALS:	WALLS: Timber	ROOF: Zincalume
	STRUCTURE: Stud	
CONDITION: Good	INTACTNESS: Fair	THREATS: Additions
SIGNIFICANT INTACT ELEMENTS:		
FORM. FACADE. VERANDAH. GABLE DECORATION. VERANDAH DECORATION. CHIMNEYS. DOOR. WINDOWS. CONTEXT Nos: 60, 64 & 70.		
SIGNIFICANCE:		
TYPE:	HISTORICAL. ARCHITECTURAL.	
LEVEL:	LOCAL.	
DESIGNATION EXISTING:	PLANNING SCHEME.	
RECOMMENDED CONTROL:	PLANNING SCHEME.	
OBSCURED	SURVEY: RP	DATE: 28.3.1997
		NEGS: 9.10 & 1280.10





220

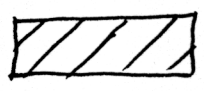
664

No 62

218

No 60

SKENE STREET



MAJOR ADDITION c1980s.

RP. 28.3.97. NTS.

Richard Peterson Architect & Conservation Consultant 1997.

HISTORY: In 1910 Clara Camp owned this new timber house and lived there until the mid 1920s. She then rented it to Clara Grey, shirtmaker, and in 1935, Edward Wyatt, merchant, was Clara Camp's tenant.¹

VISUAL DESCRIPTION: A timber Edwardian hipped-roof house, triple-fronted. The left bay is set forward as a gable. Its central section projects as a rectangular bay window, the upper gable has Medievalising timbers, including a double ogee, supported on deep convex brackets with a triple window. The verandah is under the hip around the angle with an oculus and rectangular bay window on the splay, with a splayed gable over. The valance is palisade, with wavy catenary curves at the angle and posts are turned. Brackets and panels are ogee fretwork. Chimneys have plain brick friezes.

SIGNIFICANCE: A characteristic Edwardian timber house built in 1910. It is architecturally significant as representative of this domestic style and historically in embodying life in Newtown before the Great War.

INTACTNESS: Fair. There have been major additions and historicist elaboration including finials introduced, which confuses the historical evidence and reduces significance. The fence and arbour are recent, sympathetic in materials, but not in alignment.

CONDITIONS & THREATS: Good.

¹ City of Newtown and Chilwell Ratebooks.