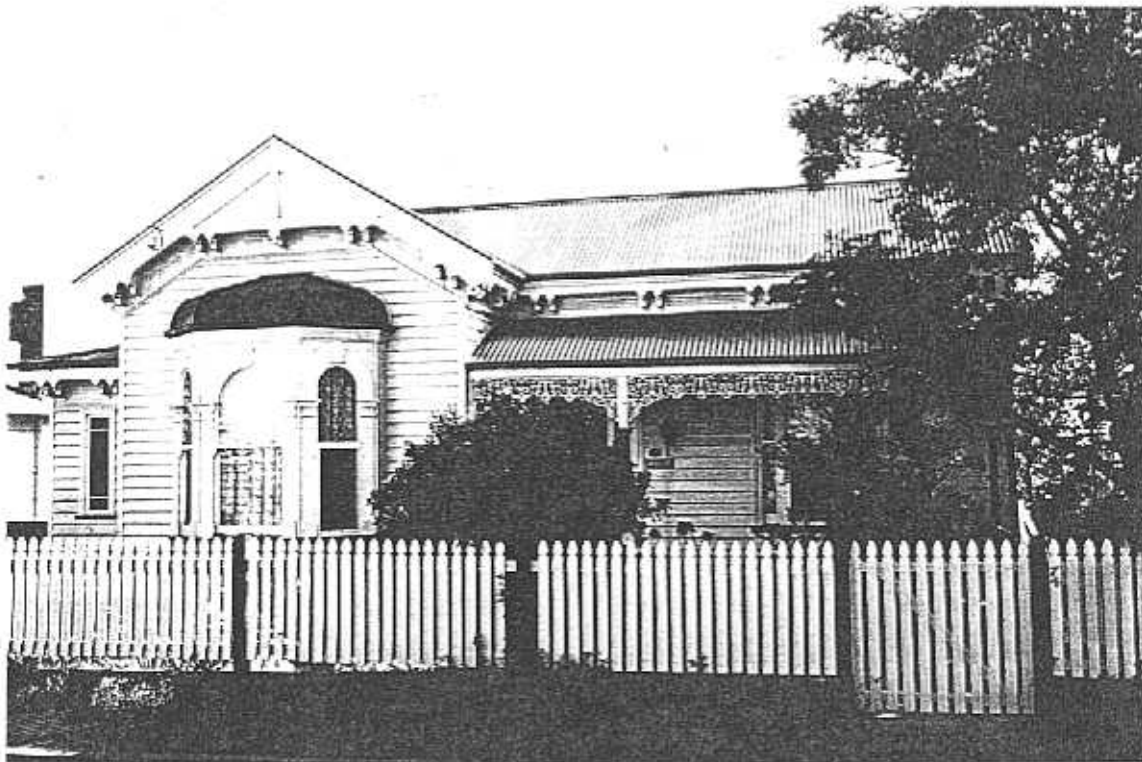


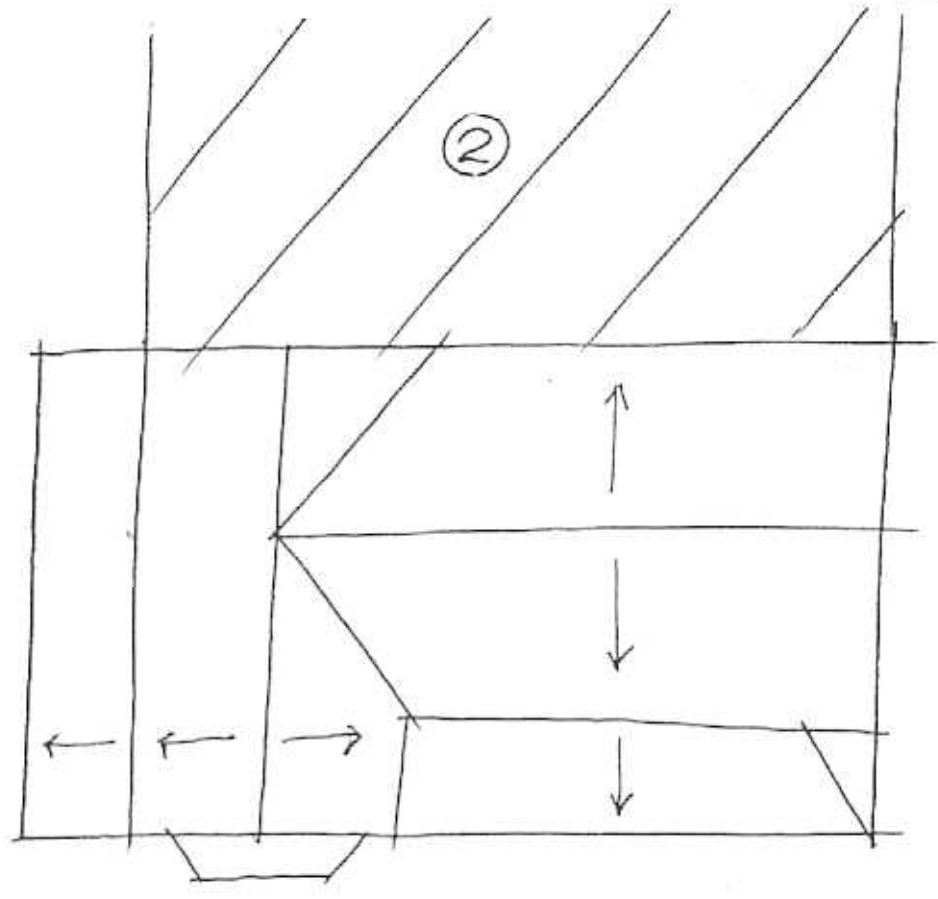
NEWTOWN URBAN CONSERVATION STUDY. - 'C' CITATIONS. Ref: 222

Richard Peterson Architect & Conservation Consultant, 1997.

NAME:	Wongrabel, Dr B M Edwards		
FORMER NAME:	Northfleet		
ADDRESS:	74 Skene Street		
USE:	House & Surgery		
PREVIOUS USE:	House		
SIGNIFICANT DATE:	CONSTRUCTION DATE:	1892	SOURCE: 1
DESIGNER: —	BUILDER:		
CRITERIA: H1; Ar1	HISTORIC THEME: 2.3		
DESCRIPTION:	STYLE: Late Vic'n	STORIES: 1	DETACHED.
MATERIALS:	WALLS Timber	ROOF Colorbond	STRUCTURE Stud
CONDITION: Excellent	INTACTNESS: Very good	THREATS: —	
SIGNIFICANT INTACT ELEMENTS:			
FORM. FACADE. VERANDAH. ROOF FORM. GABLE DECORATION. EAVES DECORATION. VERANDAH DECORATION. CHIMNEYS. DOOR. WINDOWS. PAINTWORK SCHEME.			
SIGNIFICANCE:			
TYPE:	HISTORICAL. ARCHITECTURAL.		
LEVEL:	LOCAL.		
DESIGNATION EXISTING:	PLANNING SCHEME.		
RECOMMENDED CONTROL:	PLANNING SCHEME.		
OBSCURED.	SURVEY: RP	DATE: 28.3.1997	NEGS: 9.14 & 1280.13



222



WONGRABEL

No 74

SKENE STREET

RP 28. 3. 97 NTS.



HISTORY: Built in 1892, this timber cottage with seven rooms and an outhouse was owned and occupied by Alfred Deane, a butcher. Deane named his house Northfleet and lived there until c1910 when the land was measured at 119' x 187'. The house remained in the Deane family however, with Lily Deane, a clerk, living there until at least 1935. She sold some of the land though, so that it measured 54' x 186'.¹

VISUAL DESCRIPTION: An unusual, double-fronted Late Victorian Boom timber house with a gabled roof. The left bay is set forward with a canted bay window. This has an unusual convex hipped roof in tray and roll metal, an elaborate cornice-mould and architraves to the round-headed windows, (those at side being stilted), over Doric pilasters, with spandrel lozenges and panels under.

The upper gable jettys, up to which the eaves decoration extends in a charmingly naive manner. It has unusual chunky ogee fretwork bracket-pairs with turned spindle drops, with unusual horizontal ribs and in the gable, angled also between. The barge has similar decoration with teardrop incised lobes and the upper gable has an incised rising sun motif.

The hipped roof verandah is in the angle, with cast-iron lace valance and brackets. Timber posts have cast zinc Composite capitals and bases, with dado blocks. Over, is unusual coin-mould decoration with lion's heads. At left is a skillion wing, with a leadlight window incorporating a stained glass rondel.

The chimney has deep coved moulds, with a mansard top. The entrance has ruby glass side and fan-lights with a four-panelled door. The right window is tripartite.

SIGNIFICANCE: A most singular and elaborate Late Victorian timber house in excellent condition, built in 1892, with some fascinating if sometimes charmingly naive, decorative details. It has architectural significance locally for its unusual decoration and representative of domestic stylistic extravagance of the Boom period and historically in embodying the pretension of a trade family in Newtown just before the economic crash of 1892.

INTACTNESS: Very good. The fence and major double-storey rear addition are recent, the chimney brickwork has been painted and the finial has been truncated at the roofline.

CONDITIONS & THREATS: Excellent.

¹ City of Newtown and Chilwell Ratebooks.