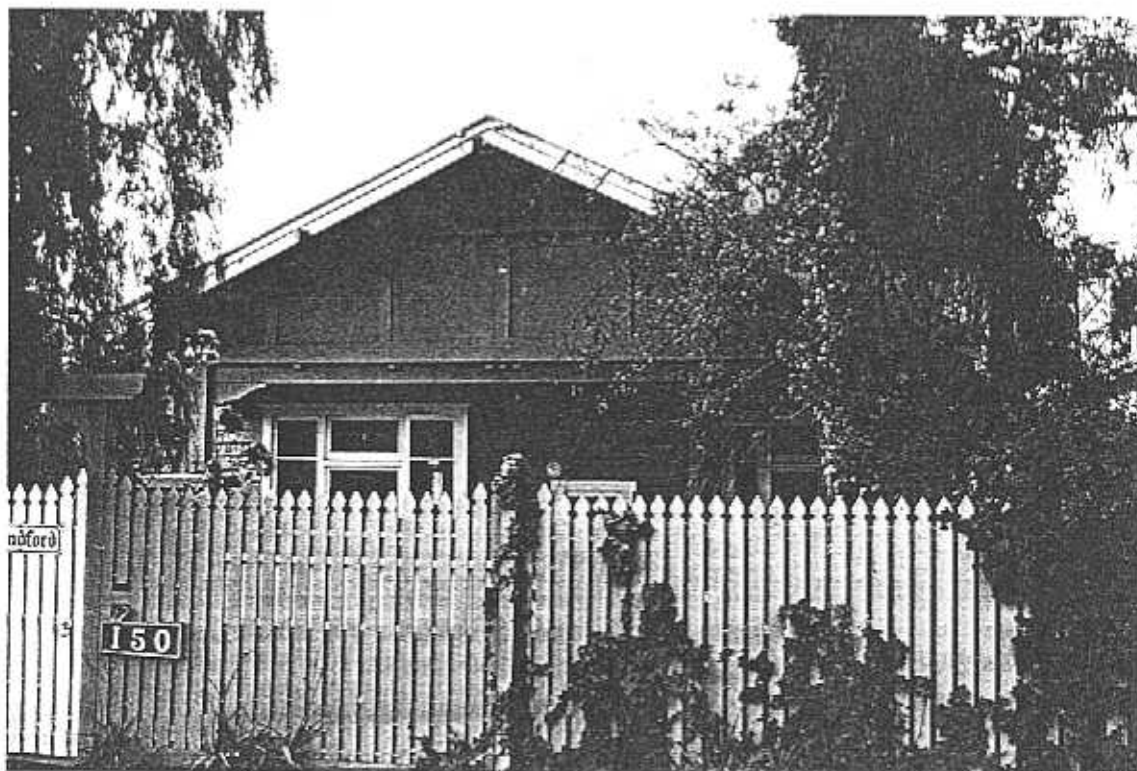
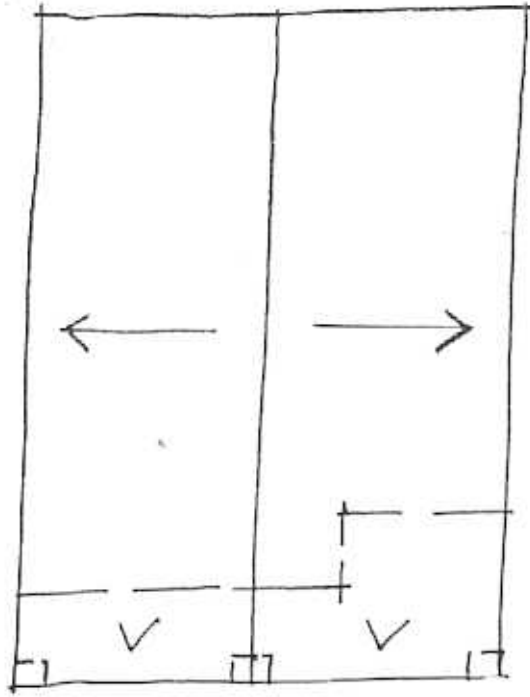


NEWTOWN URBAN CONSERVATION STUDY. - 'C' CITATIONS. Ref: 232
 Richard Peterson Architect & Conservation Consultant. 1997.

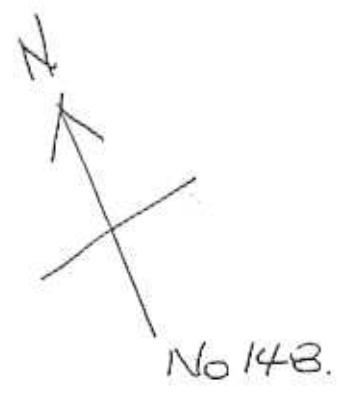
| | |
|---|--|
| NAME: Sandford | |
| ADDRESS: 150 Skene Street | |
| USE: House | |
| SIGNIFICANT DATE: | CONSTRUCTION DATE: 1922 SOURCE: 1 |
| DESIGNER: — | BUILDER: — |
| CRITERIA: H1; Ar1 | HISTORIC THEME: 2.3 |
| DESCRIPTION: STYLE: Bungalow | STORIES: 1 DETACHED. |
| MATERIALS: WALLS: Timber | ROOF: STRUCTURE: Stud |
| | Galvanised |
| CONDITION: Good | INTACTNESS: Very good THREATS: Renovation? |
| SIGNIFICANT INTACT ELEMENTS: | |
| FORM. FACADE. VERANDAH. ROOF FORM. GABLE DECORATION. VERANDAH DECORATION. DOOR. WINDOWS . CONTEXT Nos: 135, 139, 146 & 148. | |
| SIGNIFICANCE: | |
| TYPE: | HISTORICAL. ARCHITECTURAL. |
| LEVEL: | LOCAL. |
| DESIGNATION EXISTING: | PLANNING SCHEME. |
| RECOMMENDED CONTROL: | PLANNING SCHEME. |
| SURVEY: RP | DATE: 28.3.1997 NEGS: 9.29 |



232



SANDFORD
No 150



SKENE STREET

RP. 28.3.97 NTS

HISTORY: A structure described in the Rate Books as a 'workshop', which was owned by Michael Dennis, occupied this site in 1921. By 1922 the structure had presumably been removed and a house, which was nominated to have cost £900 (\$1,800), had been built for James Young who had earlier purchased the land from Dennis. A draper by trade, Young still lived in the house in 1930.¹

VISUAL DESCRIPTION: A simple double-fronted timber Californian Bungalow with a single gable roof facing. Beneath, across the front, recessed at right is the verandah on post-pairs with plain ogee brackets over roughcast piers, with plate tops. The upper gable has shingles, jettying on blocks, then timbered over bullnosed brackets, triple at centre.

Windows are tripartite, upper sashes leadlight, with a small window at the entry, at the side of the recess, with a panelled door and sidelight.

SIGNIFICANCE: A simple (yet not lacking decorative detail) timber Californian Bungalow built in 1922. It is architecturally significant as representative of the most elementary expression of this domestic style and historically in embodying life in Newtown between the wars.

INTACTNESS: Very good. Side shutters are 1970s additions and roughcast and bricks have been painted.

CONDITIONS & THREATS: Good.

¹ City of Newtown and Chifwell Rate Books