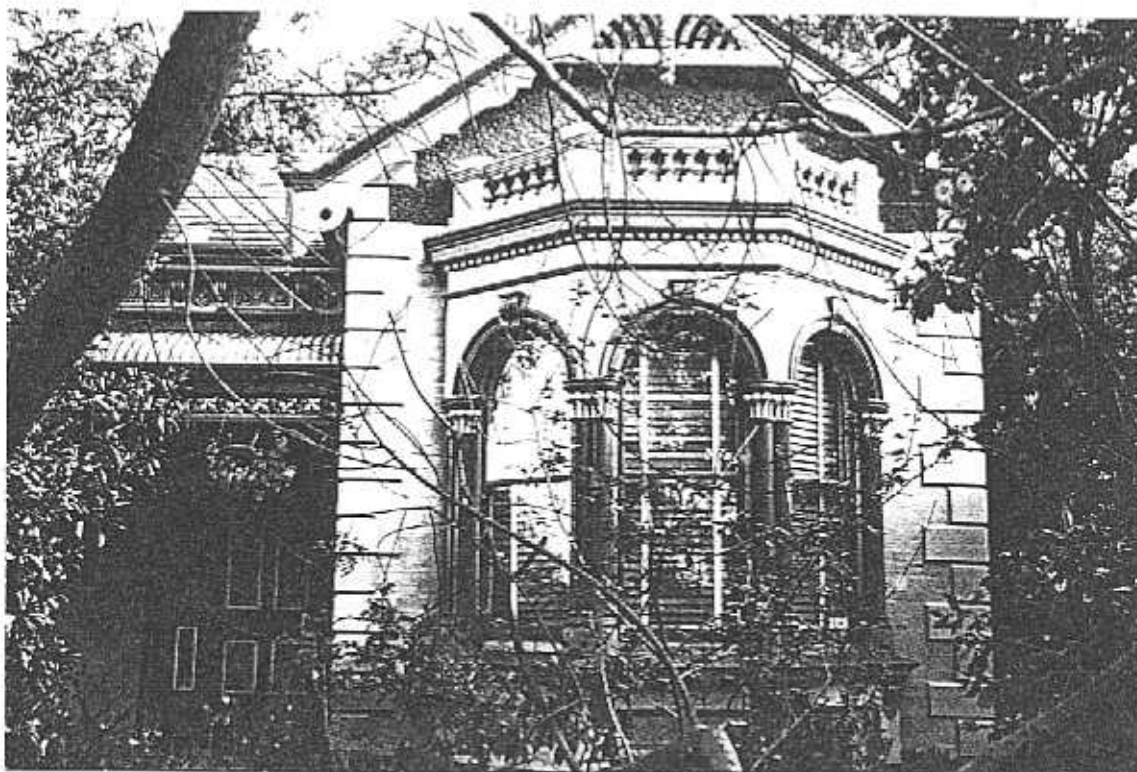


**NEWTOWN URBAN CONSERVATION STUDY. - 'C' CITATIONS. Ref: 240**

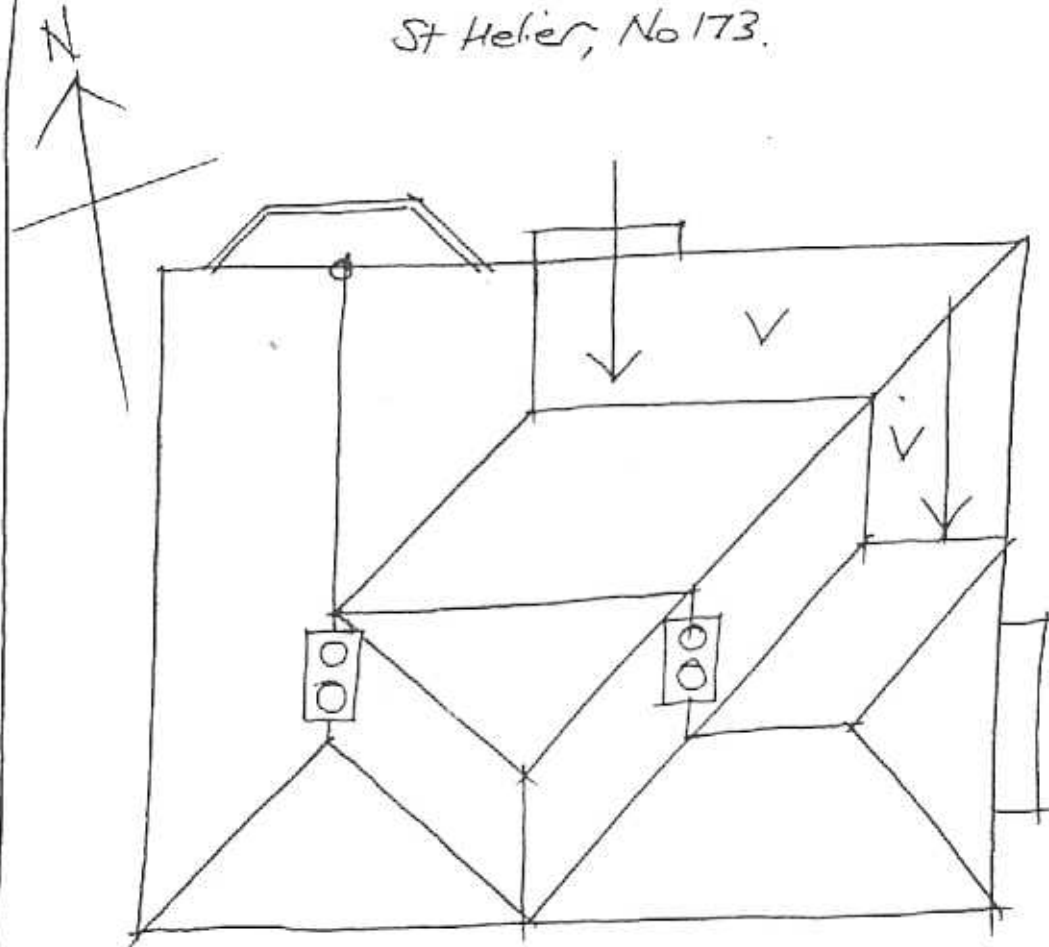
Richard Peterson Architect & Conservation Consultant. 1997.

<b>NAME:</b> St Helier			
<b>ADDRESS:</b> 173 Skene Street			
<b>USE:</b> House			
<b>SIGNIFICANT DATE:</b>		<b>CONSTRUCTION DATE:</b> 1893-7 <b>SOURCE:</b> 1	
<b>DESIGNER:</b> —		<b>BUILDER:</b> —	
<b>CRITERIA:</b> H1; Ar1		<b>HISTORIC THEME:</b> 2.3	
<b>DESCRIPTION:</b>	<b>STYLE:</b> Late Vic'n	<b>STORIES:</b> 1	<b>DETACHED.</b>
<b>MATERIALS:</b>	<b>WALLS</b> Brick	<b>ROOF</b> Slate	<b>STRUCTURE</b> Lb
<b>CONDITION:</b> Very good <b>INTACTNESS:</b> Very good <b>THREATS:</b> Roof maintenance			
<b>SIGNIFICANT INTACT ELEMENTS:</b>			
MATERIALS. Slates. FORM. FACADE. VERANDAH. ROOF FORM. PARAPET DECORATION. GABLE DECORATION. EAVES DECORATION. ROOF DECORATION. VERANDAH DECORATION. CHIMNEYS. DOORS. WINDOWS.			
<b>SIGNIFICANCE:</b>			
<b>TYPE:</b>		HISTORICAL. ARCHITECTURAL.	
<b>LEVEL:</b>		LOCAL.	
<b>DESIGNATION EXISTING:</b>		PLANNING SCHEME.	
<b>RECOMMENDED CONTROL:</b>		PLANNING SCHEME.	
<b>OBSCURED.</b>	<b>SURVEY:</b> RP	<b>DATE:</b> 29.3.1997	<b>NEGS:</b> 10.2,3 & 1280.33

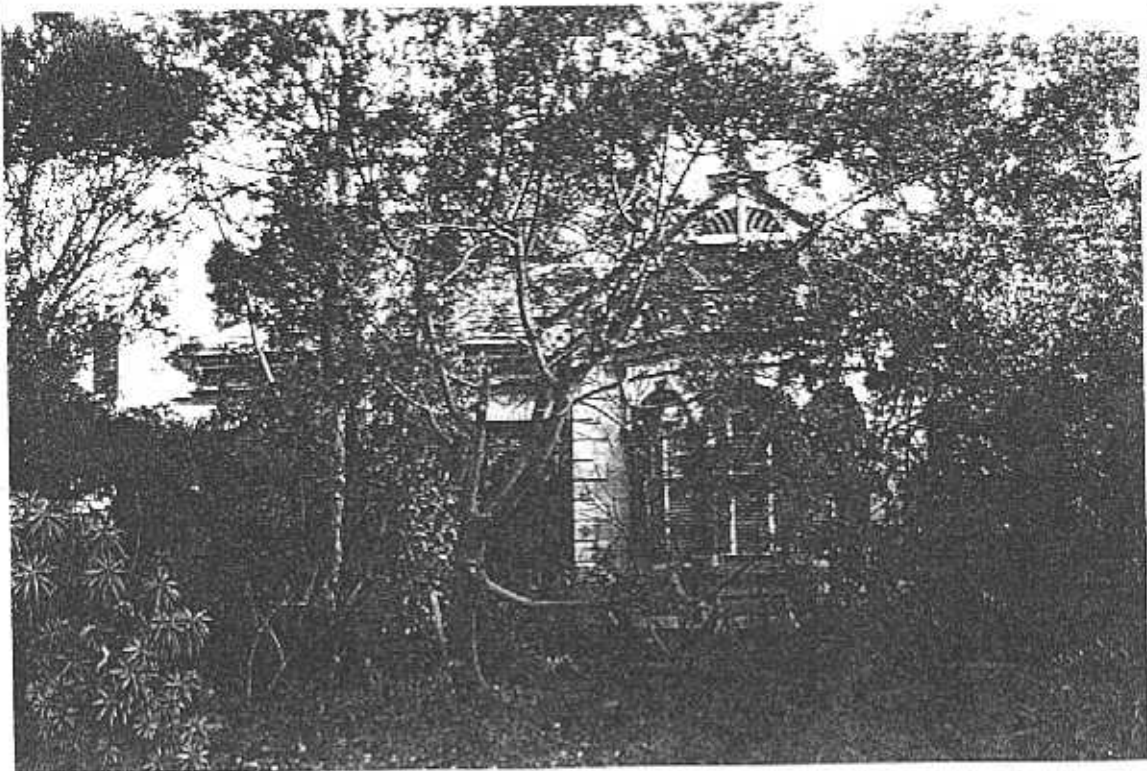


SKENE STREET

St Helier, No 173.



RP 29.3.97 NTS.



*Richard Peterson Architect & Conservation Consultant 1997.*

**HISTORY:** Robert Marsham purchased, or acquired, the land on which this house was constructed from John Marsham, probably a relative. Commencing in 1893, construction of the house was slow for it was repeatedly described in Rate Books as an 'unfinished cottage' until 1897 when Robert Marsham, a plasterer, was nominated as not only the owner but now also the occupier. Marsham continued to be described as the owner and occupier of 173 Skene Street until 1915 when Jessie Marsham, possibly his widow, was nominated as the owner and occupier. In 1921 James Miller owned and occupied the cottage until it was taken over by the painter Frederick Fuller in 1925. By 1930 Agnes Fuller owned and lived at 173 Skene Street.<sup>1</sup>

**VISUAL DESCRIPTION:** A triple-fronted rendered brick(?) Late Victorian house with both Italianate and Boom characteristics and a hipped slate roof. The left side rear bay is set forward, as is the right bay as a gable. The upper gable is roughcast, unusually with an elaborately scalloped bargeboard, with pendant barges, drilled and turned.

There is a turned finial with a cross-bar, with an unusual curved palisade over. This bay has a canted bay window with a parapet, balustraded between piers, dentillated cornice and frieze moulds. Windows are round-headed with unusual ogce moulded keystones, through architrave moulds, supported by Early English half column pairs on octagonal bases. The deep eill is supported round brackets with female heads, rosettes and spandrel panels.

The bullnosed verandah extends around the angle, with a cast-iron lace valance over a rail, lace brackets on slender Composite posts. It is paved with black and white chequerboard marble diamonds, with balustrade edging and steps. Chimneys have pots and deep moulds supported on coved brackets.

Eaves have decorative console bracket pairs between rosettes and scrollage panels. Angles have quoins and brickwork is tuckpointed, windows are tripartite, also with brackets and Composite mullions. The entrance door is panelled with blue glass in side and the round headed fanlight and with an elaborately carved head (or lintel), supported on consoles, with flat plaster mullions. There is a second door at the left end of the verandah.

**SIGNIFICANCE:** A particularly elaborately decorated rendered Late Victorian house with both Italianate and Boom characteristics, built in 1893-97.

It is architecturally significant as a remarkably decorative expression of both styles combined and for its diversity for architectural detail and historically in embodying the pretensions of family life in late nineteenth century details.

---

<sup>1</sup> City of Newtown and Chilwell Rate Books

**INTACTNESS:** Very good. Brickwork and chimney pots are painted, colours are not appropriate and the bush garden is not appropriate either, although charming.

**CONDITIONS & THREATS:** Very good.