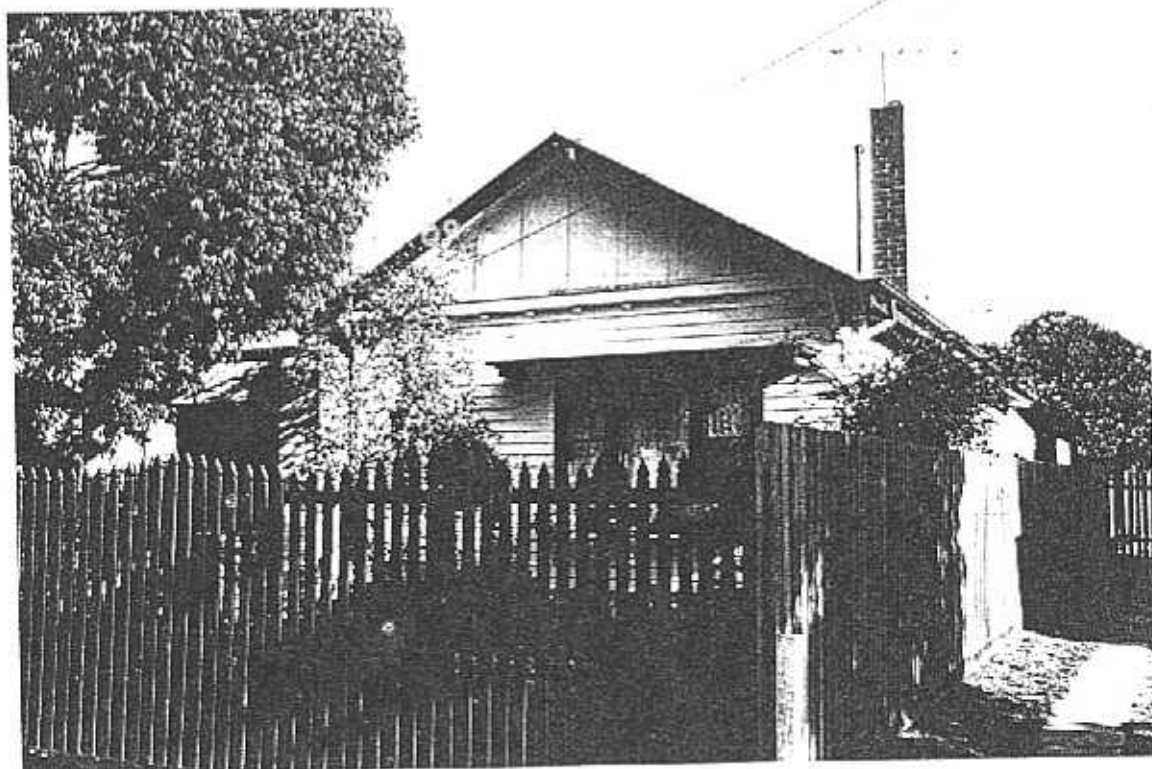
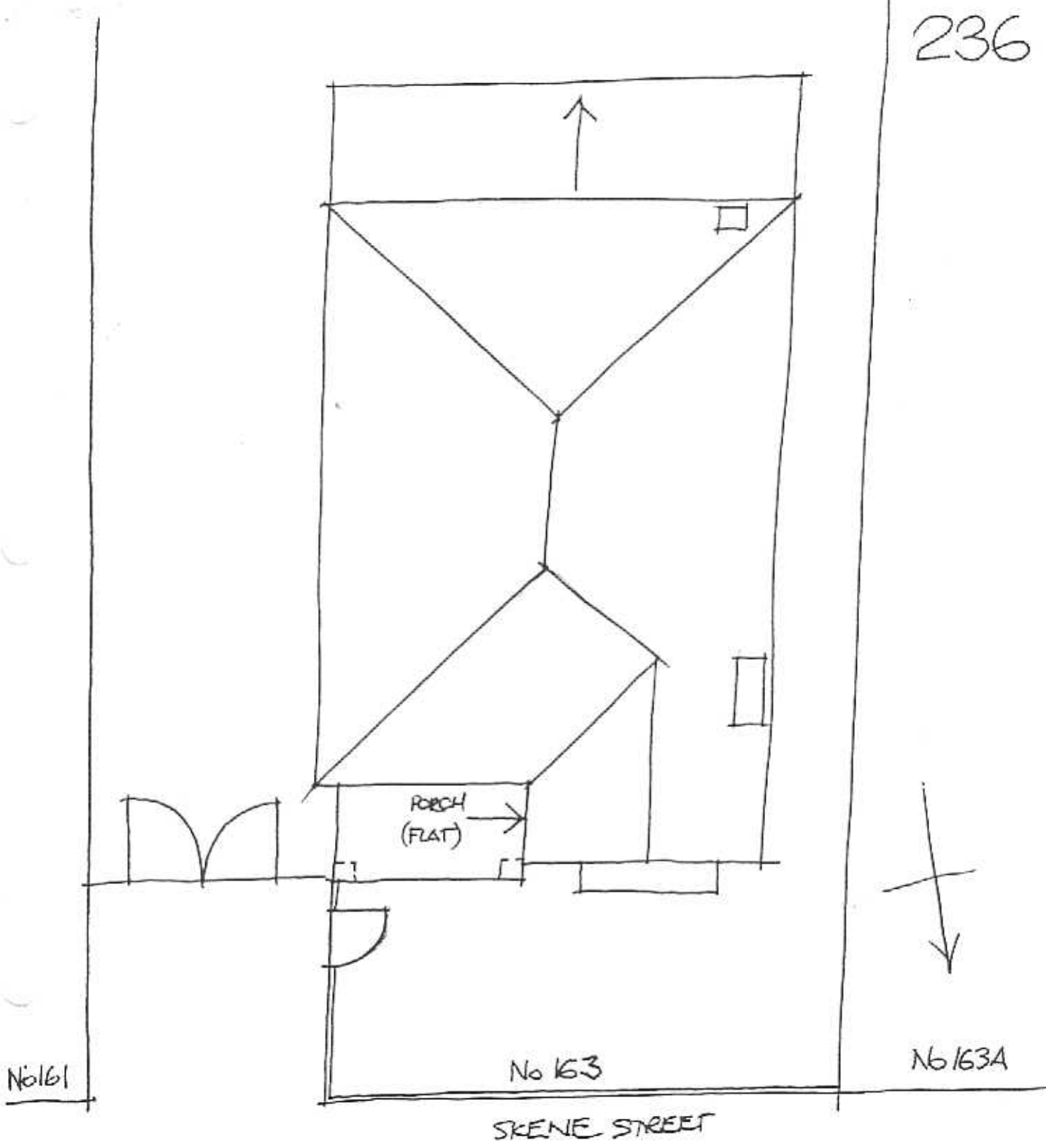


NEWTOWN URBAN CONSERVATION STUDY. - 'C' CITATIONS. Ref: 236
 Richard Peterson Architect & Conservation Consultant. 1997.

NAME: —		
ADDRESS: 163 Skene Street		
USE: House		
SIGNIFICANT DATE:	CONSTRUCTION DATE: 1940	SOURCE: 1
DESIGNER: —	BUILDER: —	SOURCE: Visual
CRITERIA: H1; Ar1	HISTORIC THEME: 2.3	
DESCRIPTION: STYLE: Late Bung'w	STORIES: 1	DETACHED.
MATERIALS: WALLS Timber	ROOF: Galvanised	STRUCTURE: Stud
CONDITION: Good	INTACTNESS: Fair	THREATS: —
SIGNIFICANT INTACT ELEMENTS:		
FORM. FACADE. ROOF FORM. WINDOWS . CONTEXT Nos: 139, 141, 143, 145, 156 & 161 Skene Street & 49, 51, 53, 55 etc George Street.		
SIGNIFICANCE:		
TYPE:	HISTORICAL. ARCHITECTURAL.	
LEVEL:	LOCAL.	
DESIGNATION EXISTING:	PLANNING SCHEME.	
RECOMMENDED CONTROL:	PLANNING SCHEME.	
OBSCURED.	SURVEY: RP	DATE: 28.3.1997
		NEGS: 9.35 & 1280.28



236



RP 28.3.97 NTS.

HISTORY: In 1937 the land on which this house was constructed was owned by Royal Kaullinan, a baker who lived in Mildura. By 1940 the house, still owned by Kauffman, had been constructed on the site and was occupied by John Cody, a clerk, and four others.¹ It was perhaps not quite completed before the 1930s Great Depression, and left, then completed afterwards in the subsequent 1930s villa style.

VISUAL DESCRIPTION: A relatively plain, late hip-roofed Californian Bungalow with some 1930s elements. The right bay is set forward as a gable. The upper gable is timbered with convex brackets, with a porch in the angle. Windows are double at left and Chicago at right and upper sashes are geometric leadlight. At right is a flat hood.

The porch and rectangular chimney are in the 1930s manner. The porch corner piers have Mesopotamian influence, derived from interest in the archaeological discoveries of Sir Leonard Woolley and others in the 1920s.

SIGNIFICANCE: A characteristic timber Californian Bungalow, with some elements in the 1930s villa manner and some influence of the Mesopotamian style, completed by 1940. It is architecturally significant locally as representative of this domestic style and of the stylistic influence of the Mesopotamian archaeological discoveries of Sir Leonard Woolley and others in the 1920s. It is historically significant locally in embodying life in Newtown prior to the Great Depression and evidence of the standstill in the building trade that is caused.

INTACTNESS: Fair. The chimney and porch were built later, in the 1930s, but remain significant. The brickwork has been painted.

CONDITIONS & THREATS: Good.

¹ City of Newtown and Chilwell Rate Books