

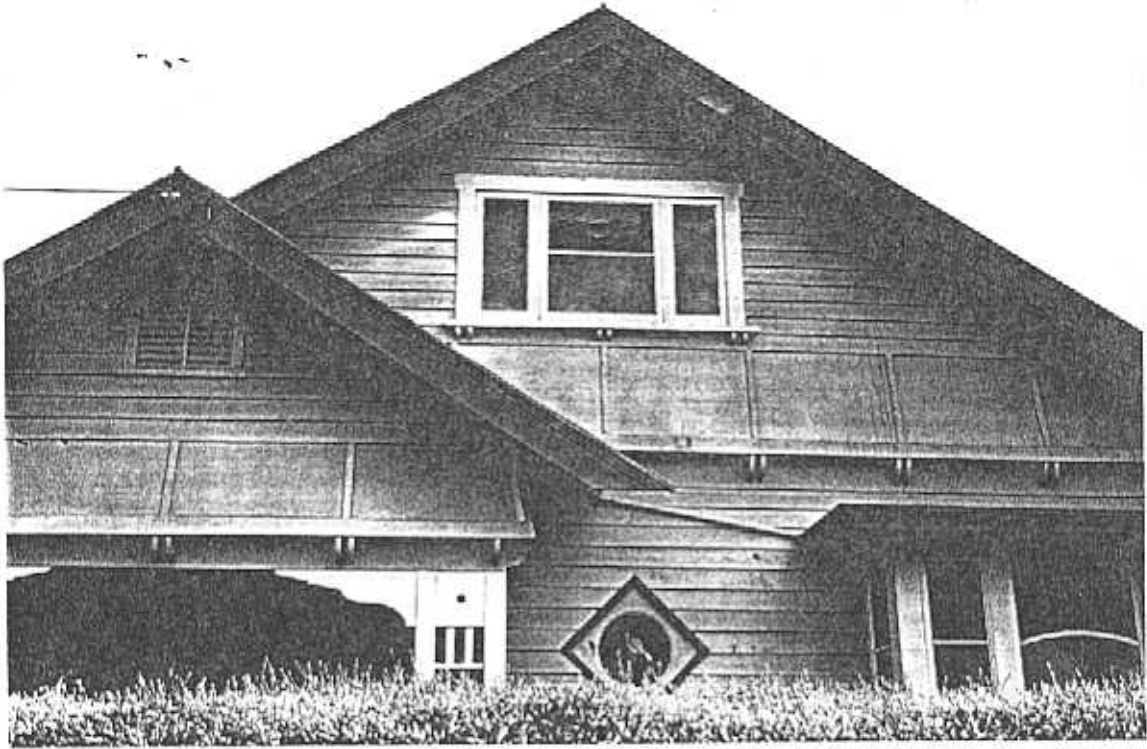
**NEWTOWN URBAN CONSERVATION STUDY. - 'C' CITATIONS. Ref: 234**

Richard Peterson Architect & Conservation Consultant. 1997.

<b>NAME:</b> —		
<b>ADDRESS:</b> 161 Skene Street (SW cnr George Street)		
<b>USE:</b> House		
<b>SIGNIFICANT DATE:</b>	<b>CONSTRUCTION DATE:</b> 1925	<b>SOURCE:</b> 1
<b>DESIGNER:</b> —	<b>BUILDER:</b> Charles Anderson	
<b>CRITERIA:</b> H1; Ar1	<b>HISTORIC THEME:</b> 2.3	
<b>DESCRIPTION:</b>	<b>STYLE:</b> Bungalow	<b>STORIES:</b> 2
<b>MATERIALS:</b>	<b>WALLS:</b> Timber	<b>ROOF:</b> Galvanised
<b>CONDITION:</b> Very good	<b>INTACTNESS:</b> Excellent	<b>THREATS:</b> —
<b>SIGNIFICANT INTACT ELEMENTS:</b>		
FORM. FACADE. VERANDAH. ROOF FORM. GABLE DECORATION. VERANDAH DECORATION. CHIMNEY. Pot. DOOR. WINDOWS. Pictorial leadlights. PAINTWORK SCHEME. OUTBUILDING. FENCE. Side. HEDGE. CONTEXT Nos: 139, 141, 143, 145, 156 & 163 Skene Street & 49, 51, 53, 55 etc George Street.		
<b>SIGNIFICANCE:</b>		
<b>TYPE:</b>	HISTORICAL. ARCHITECTURAL.	
<b>LEVEL:</b>	LOCAL.	
<b>DESIGNATION EXISTING:</b>	PLANNING SCHEME.	
<b>RECOMMENDED CONTROL:</b>	PLANNING SCHEME.	
<b>SURVEY:</b> RP	<b>DATE:</b> 28.3.1997	<b>NEGS:</b> 9.32, 9.34 & 1280.26



234

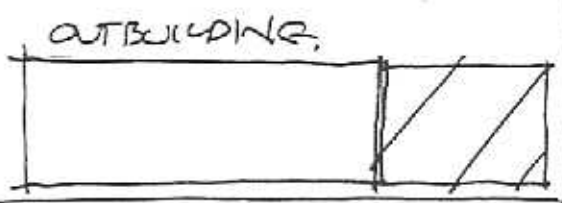
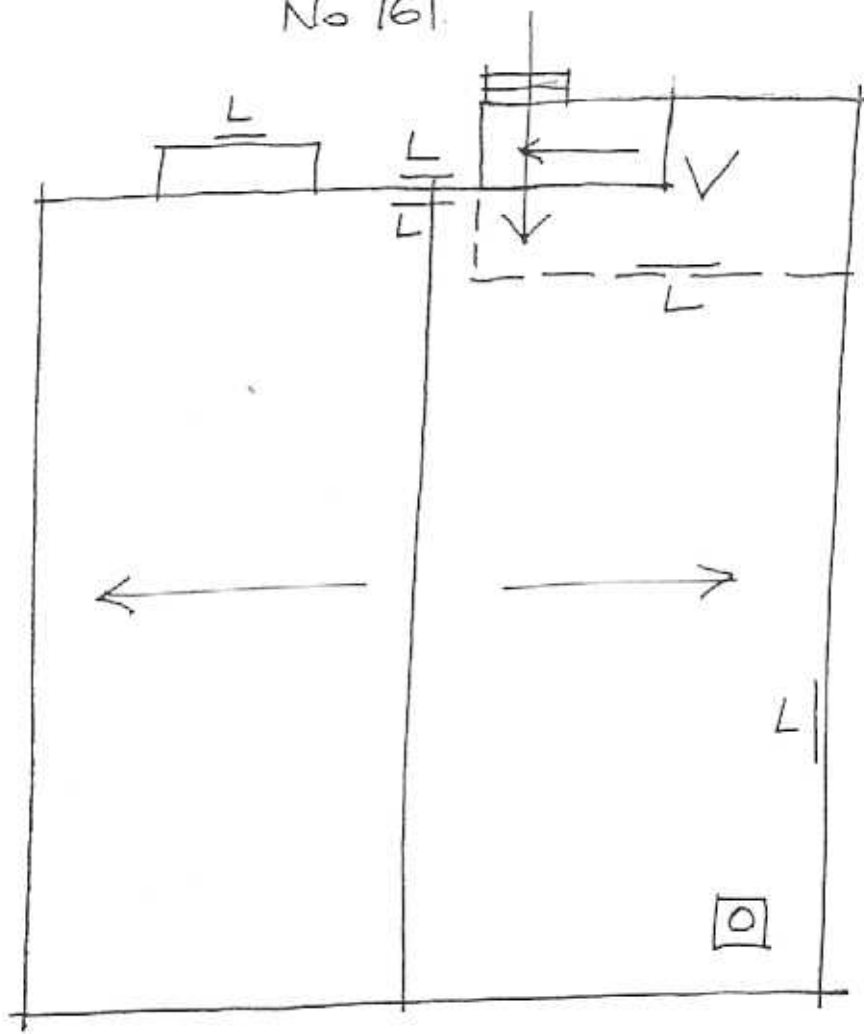


234


SKENE STREET

GEORGE STREET

No 161



RP. 28.3.97 NTS.

 RECENT

**HISTORY:** A builder, Charles Anderson, owned the land at 161 Skene Street in 1924 and by 1925 was occupying a house on the site. Anderson was still described as the owner and occupier in 1940.<sup>1</sup>

**VISUAL DESCRIPTION:** A double-fronted timber Californian Bungalow with a major gabled roof facing Skene Street, incorporating an attic. The left bay projects as a minor gable, recessed as a verandah. This has triple corner posts with deep ogee brackets, other decoration and balustrade.

Upper gables have rectangular vents, and splay over bullnosed bracket pairs, with eaves supported on convex fretwork brackets. Rafters are exposed. The chimney has a terracotta pot. At right is a rectangular bay window with a flat roof. Windows, including attic, are tripartite upper sashes are leadlight. The entrance is in the angle.

There is a central oculus window inscribed by a diamond. This has a magpie and the attic upper central sash has a rural scene with farmhouses and cows depicted in leadlight.

**SIGNIFICANCE:** A timber particularly intact Californian Bungalow with interesting pictorial leadlight windows built in 1924-25. It is architecturally significant locally as representative of this domestic style and historically in embodying inter-war life in Newtown.

**INTACTNESS:** Excellent.

**CONDITIONS & THREATS:** Very good.

---

<sup>1</sup> City of Newtown and Chilwell Rate Books