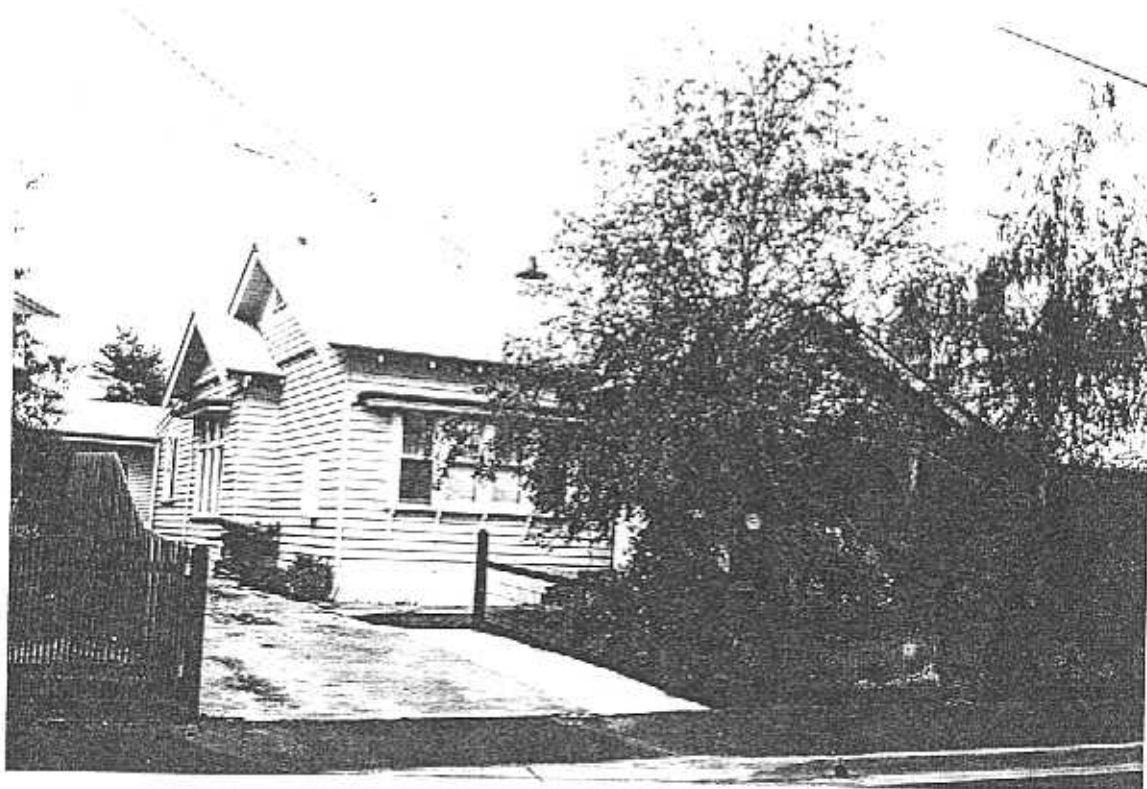


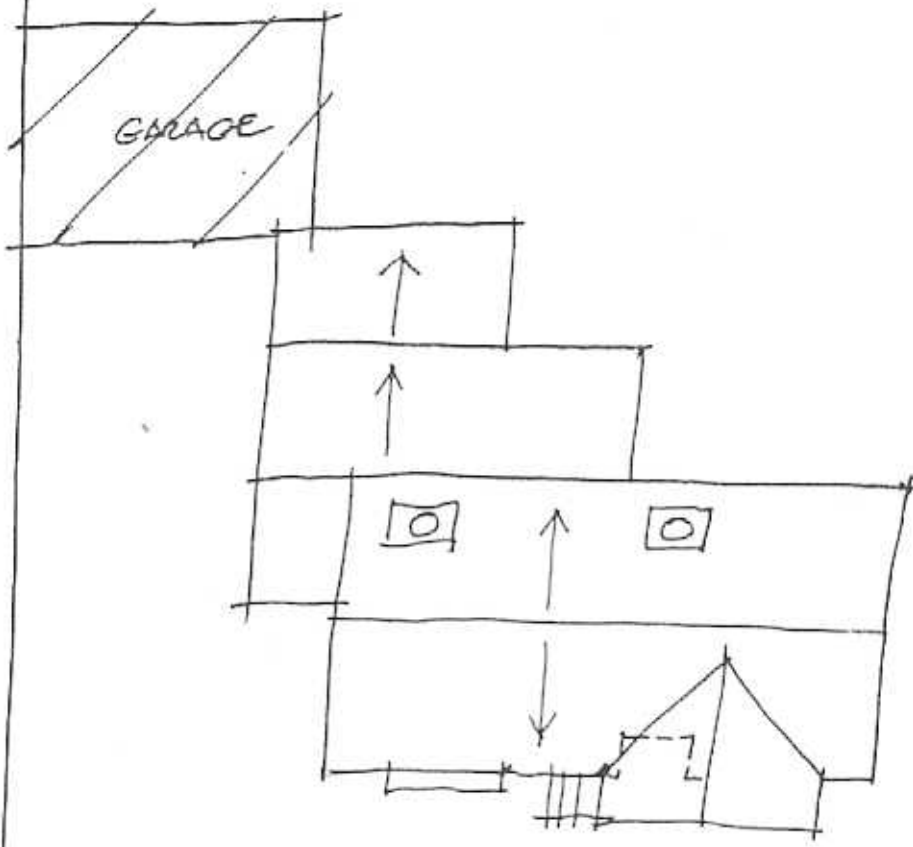
**NEWTOWN URBAN CONSERVATION STUDY. - 'C' CITATIONS. Ref: 228**

Richard Peterson Architect & Conservation Consultant. 1997.

<b>NAME:</b> —	
<b>ADDRESS:</b> 143 Skene Street	
<b>USE:</b> House	
<b>SIGNIFICANT DATE:</b>	<b>CONSTRUCTION DATE:</b> c1925-6 <b>SOURCE:</b> 1
<b>DESIGNER:</b> —	<b>BUILDER:</b> —
<b>CRITERIA:</b> III; Ar1	<b>HISTORIC THEME:</b> 2.3
<b>DESCRIPTION:</b> STYLE: Bungalow	<b>STORIES:</b> 1 <b>DETACHED.</b>
<b>MATERIALS:</b> WALLS Timber	<b>ROOF:</b> Zincalume <b>STRUCTURE:</b> Stud
<b>CONDITION:</b> Excellent	<b>INTACTNESS:</b> Very good <b>THREATS:</b> —
<b>SIGNIFICANT INTACT ELEMENTS:</b> FORM, FACADE, VERANDA, ROOF FORM, GABLE DECORATION, CHIMNEYS, Pots, DOORS, PAINTWORK SCHEME, CONTEXT Nos: 139, 141, 145, 156, 161, 162 & 163.	
<b>SIGNIFICANCE:</b>	
<b>TYPE:</b>	HISTORICAL, ARCHITECTURAL.
<b>LEVEL:</b>	LOCAL.
<b>DESIGNATION EXISTING:</b>	PLANNING SCHEME.
<b>RECOMMENDED CONTROL:</b>	PLANNING SCHEME.
<b>SURVEY:</b> RP	<b>DATE:</b> 28.3.1997 <b>NEGS:</b> 9.21, 9.22 & 1280.19

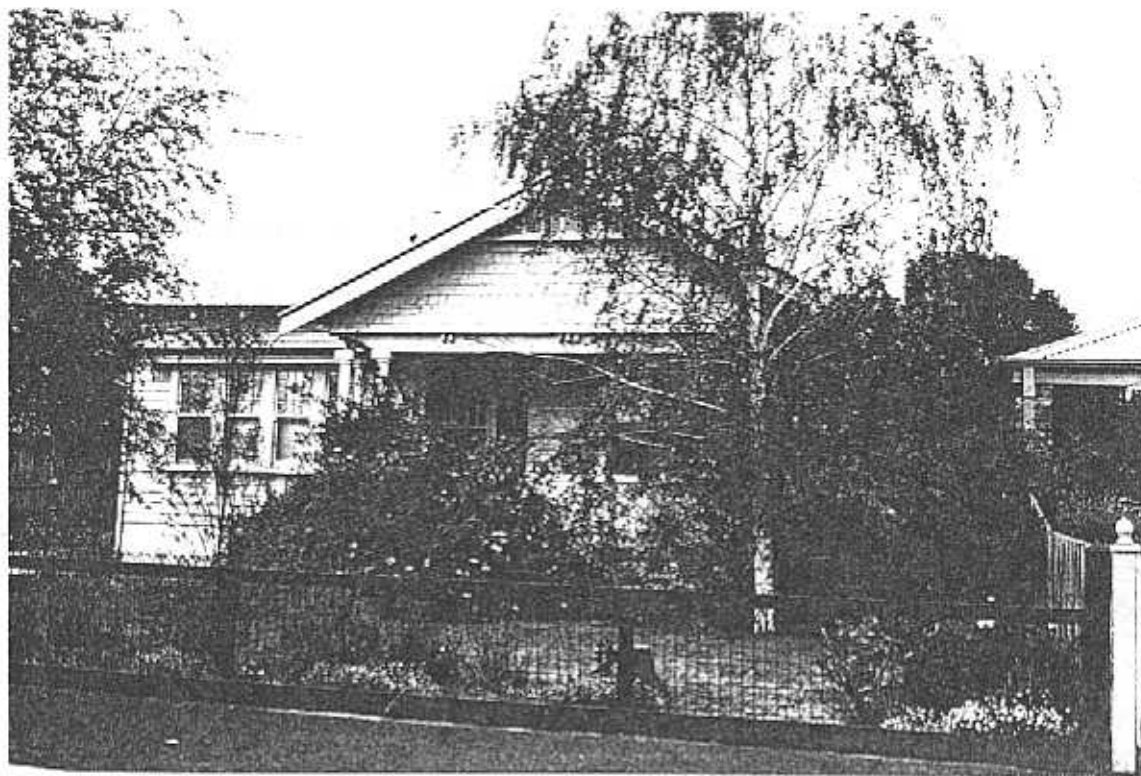


228



No 143

SKENE STREET



*Richard Peterson Architect & Conservation Consultant 1997.*

**HISTORY:** The land on which this house was built was previously owned by Victoria Hindell. It was subdivided into three house lots, 139, 141 and 143 Skene Street, between 1925 and 1926. The house at 143 Skene Street was built for and occupied by a painter, Alfred Gough in 1926. Gough was still the owner and occupier in 1930.<sup>1</sup>

**VISUAL DESCRIPTION:** A double-fronted timber Californian Bungalow. The main gable is across, with the right bay set forward over the verandah. Upper gables have palisade vents on bullnosed triple brackets. Shingles beneath jetty on more brackets. Unusually, the bressumer is supported on triple Tuscan columns over a rendered base.

Windows are in groups, set forward on deep brackets. Upper lights are leadlight and at left with a shallow flat hood. The central entrance has a pair of leadlight glazed doors. Chimneys have terracotta pots.

**SIGNIFICANCE:** A characteristic timber Californian Bungalow in excellent condition and built between 1925 and 1926. It is architecturally significant locally as representative of this domestic style and historically in embodying life in Newtown then.

**INTACTNESS:** Excellent.

**CONDITIONS & THREATS:** Very good. The fence and garage are recent, yet appropriate.

---

<sup>1</sup> City of Newtown and Chilwell Rate Books