

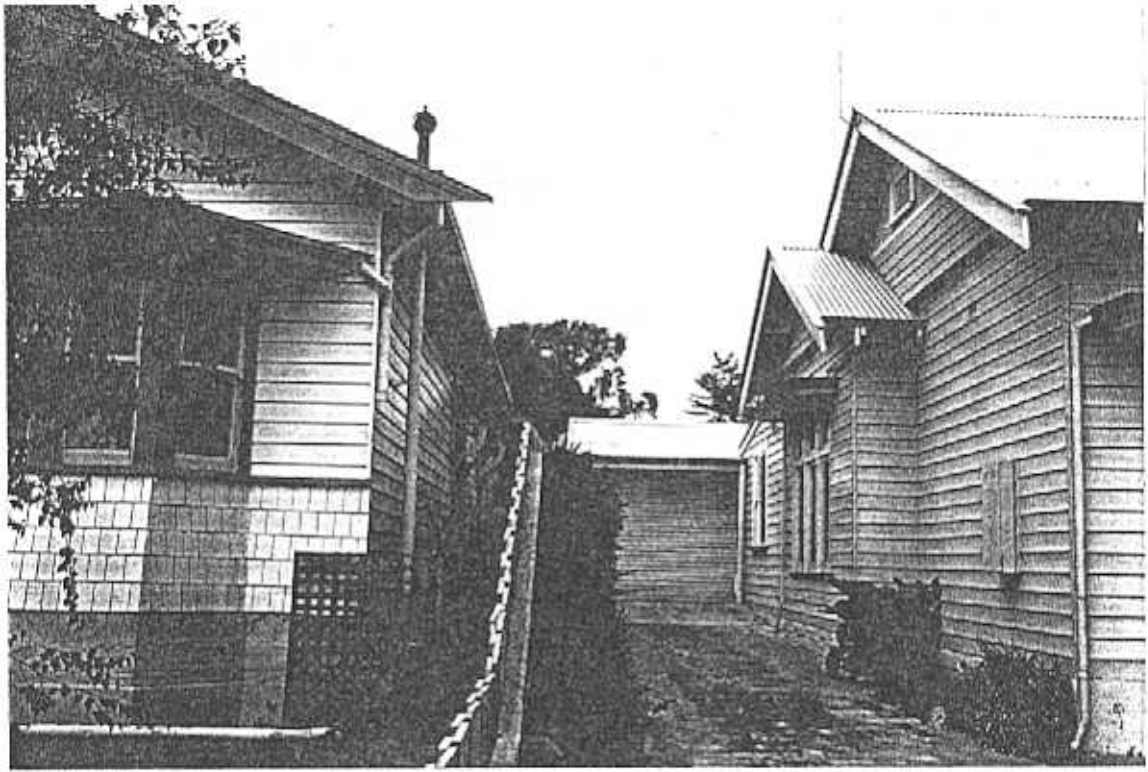
**NEWTOWN URBAN CONSERVATION STUDY. - 'C' CITATIONS. Ref: 226**

Richard Peterson Architect & Conservation Consultant. 1997.

<b>NAME:</b> —	
<b>ADDRESS:</b> 139 Skene Street	
<b>USE:</b> House	<b>CONSTRUCTION DATE:</b> 1927 <b>SOURCE:</b> 1
<b>SIGNIFICANT DATE:</b> —	<b>BUILDER:</b> —
<b>DESIGNER:</b> —	<b>HISTORIC THEME:</b> 2.3
<b>CRITERIA:</b> H1; Ar1	
<b>DESCRIPTION:</b> <b>STYLE:</b> Bungalow <b>STORIES:</b> 1 <b>DETACHED.</b>	
<b>MATERIALS:</b> <b>WALLS</b> Timber <b>ROOF</b> Iron <b>STRUCTURE</b> Stud	
<b>CONDITION:</b> Fair <b>INTACTNESS:</b> Very good <b>THREATS:</b> Maintenance.	
<b>SIGNIFICANT INTACT ELEMENTS:</b> FORM. FACADE. VERANDAH. ROOF FORM. GABLE DECORATION. VERANDAH DECORATION. CHIMNEY. DOOR. WINDOWS. PAINTWORK SCHEME. CONTEXT Nos: 141, 143, 145, 156, 161, 162 & 163. TREE.	
<b>SIGNIFICANCE:</b>	
<b>TYPE:</b>	HISTORICAL. ARCHITECTURAL.
<b>LEVEL:</b>	LOCAL.
<b>DESIGNATION EXISTING:</b>	PLANNING SCHEME.
<b>RECOMMENDED CONTROL:</b>	PLANNING SCHEME.
<b>OBSCURED</b> <b>SURVEY:</b> RP <b>DATE:</b> 28.3.1997 <b>NEGS:</b> 9.18, 9.23 & 1280.17	



226



**HISTORY:** Victoria Hindell owned the land upon which this house was constructed. She probably sold the land to George Palmer who had organised construction of the house by 1926. Verdon Rogers, a butcher, occupied the house in 1930 which was still owned by George Palmer.<sup>1</sup>

**VISUAL DESCRIPTION:** A relatively plain, double-fronted timber Californian Bungalow with gable roofs. The main gable faces, with the right gable set forward. The flat-roofed verandah is in the angle, with a curved transom between post-pairs. The upper gable is timbered over shingles. Windows are pairs. There is a mature tree at front.

**SIGNIFICANCE:** A relatively plain early Californian Bungalow built in 1926. It has architectural significance locally as an early example of this domestic style and historically in embodying life in 1920s Newtown.

**INTACTNESS:** Very good. The fence is relatively recent.

**CONDITIONS & THREATS:** Fair. Needs maintenance.



<sup>1</sup> City of Newtown and Chilwell Rate Books