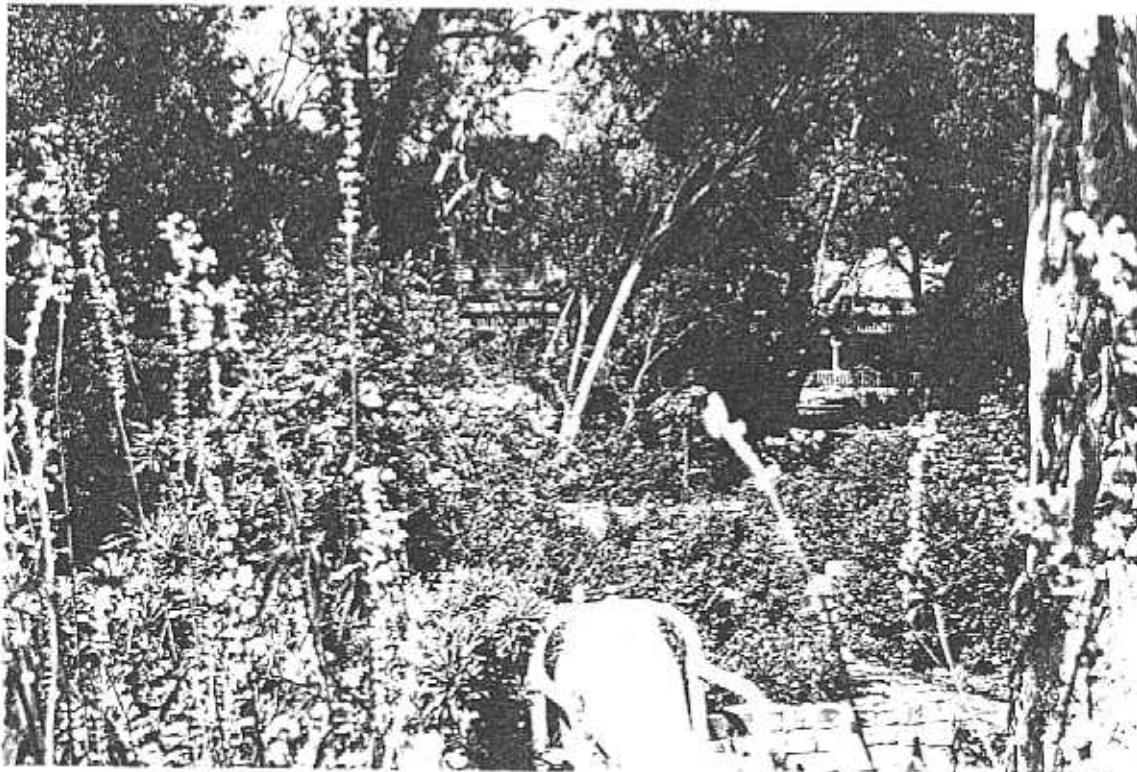


**NEWTOWN URBAN CONSERVATION STUDY. - 'C' CITATIONS. Ref: 223**

Richard Peterson Architect & Conservation Consultant. 1997.

<b>NAME:</b> Elsinore	
<b>ADDRESS:</b> 131 Skene Street	
<b>USE:</b> House	
<b>SIGNIFICANT DATE:</b>	<b>CONSTRUCTION DATE:</b> 1867 <b>SOURCE:</b> 1
<b>ALTERATIONS/ADDITIONS.</b>	<b>DATE:</b> 1990s <b>SOURCE:</b> Visual
<b>DESIGNER:</b> —	<b>BUILDER:</b> —
<b>CRITERIA:</b> H1; Ar1	<b>HISTORIC THEME:</b> 2.3
<b>DESCRIPTION:</b> <b>STYLE:</b> Edwardian <b>STORIES:</b> 2 <b>DETACHED.</b>	
<b>MATERIALS:</b> <b>WALLS</b> Timber <b>ROOF</b> Zincalume <b>STRUCTURE</b> Stud	
<b>CONDITION:</b> Very good <b>INTACTNESS:</b> Fair <b>THREATS:</b> Blocked gutters	
<b>SIGNIFICANT INTACT ELEMENTS:</b> FORM. FACADE. VERANDAH. ROOF FORM. VERANDAH DECORATION. CHIMNEYS. WINDOWS . CONTEXT Nos: 133, 144 & 146.	
<b>SIGNIFICANCE:</b>	
<b>TYPE:</b>	HISTORICAL. ARCHITECTURAL.
<b>LEVEL:</b>	LOCAL.
<b>DESIGNATION EXISTING:</b>	PLANNING SCHEME.
<b>RECOMMENDED CONTROL:</b>	PLANNING SCHEME.
<b>OBSCURED.</b>	<b>SURVEY:</b> RP <b>DATE:</b> 28.3.1997 <b>NEGS:</b> 9.15 & 1280.14



SKENE STREET

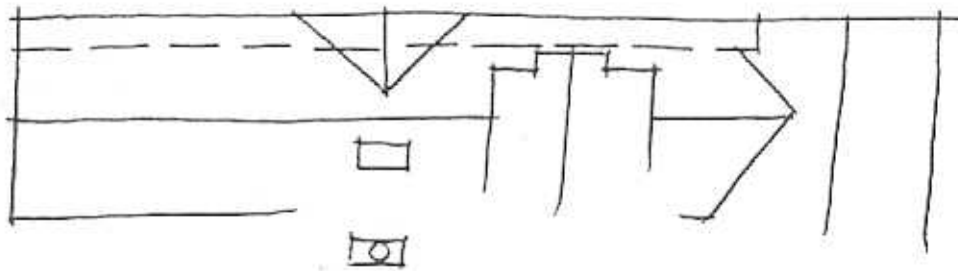
223.

224

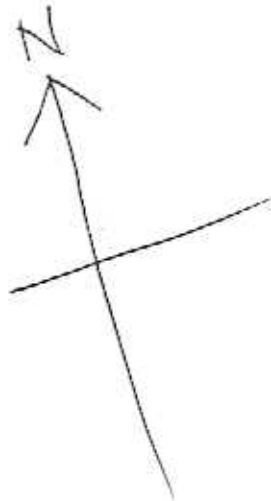
No 133

ELSINORE

No 131.



RP 28.3.97 NTS



*Richard Peterson Architect & Conservation Consultant 1997.*

**HISTORY:** Trotman arranged for the construction of this house in 1867, immediately leasing it to George Bonnett, a labourer. Although by 1869 it was owned by S Ball and rented to B Graham, it was shortly after sold to John Brownhill, a printer, who by 1877 owned the house. Brownhill continued to live at 131 Skene Street, or Elsinore as the 1915 Rate Books identified the house, for nearly fifty years, subdividing a portion of the land in 1925. By 1930 Horace Brownhill, also a printer and presumably a relative, was the owner and occupier of the house.<sup>1</sup>

**VISUAL DESCRIPTION:** An unusual long gable-roofed timber Edwardian house, set far back on the block, with an attic (perhaps an addition). It has a bull-nosed verandah across, with a pallisade valance and a balustrade, with fretwork plant-form panels and large coved fretwork brackets. Posts are turned. There is a central oval opening with a pallisade valance and balustrade, its gable faces, with the timbered upper section jutting on brackets. Chimneys are bichromatic cream and dark brown.

**SIGNIFICANCE:** An unusual large timber Edwardian house built in 1867. It has architectural significance locally as a distinctive variant of this domestic style and historically as embodying working class rental accommodation in Edwardian Newtown in the late 1860s.

**INTACTNESS:** Fair. There have been substantial additions including the garage at left and possibly the attic storey, balustrades, bullnosed verandah and possibly rebuilding generally. The high fence is not appropriate.

**CONDITIONS & THREATS:** Very good.

---

<sup>1</sup> City of Newtown and Chilwell Rate Books