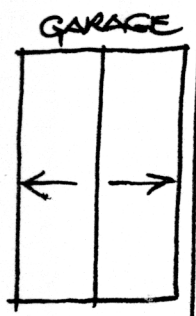
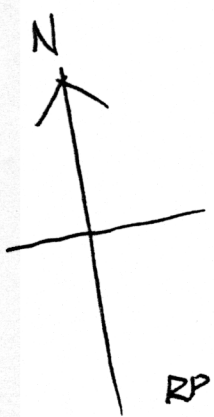
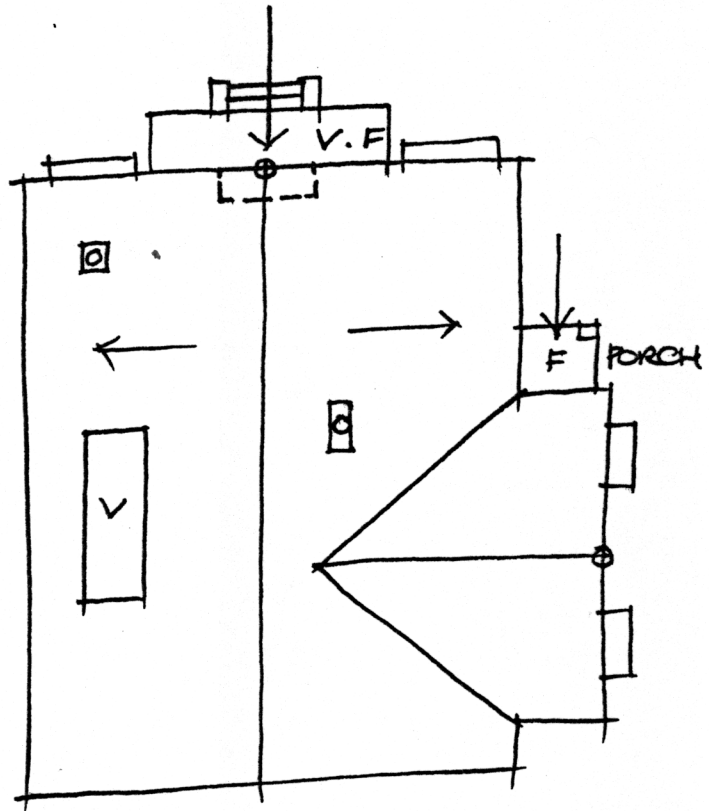


**NEWTOWN URBAN CONSERVATION STUDY. - 'C' CITATIONS. Ref: 210**  
 Richard Peterson Architect & Conservation Consultant. 1997.

<b>NAME:</b> Tamderra	
<b>ADDRESS:</b> 19 Skene Street	
<b>USE:</b> House	
<b>SIGNIFICANT DATE:</b>	<b>CONSTRUCTION DATE:</b> 1925 <b>SOURCE:</b> 1
<b>DESIGNER:</b> —	<b>BUILDER:</b> —
<b>CRITERIA:</b> H1; Ar1	<b>HISTORIC THEME:</b> 2.3
<b>DESCRIPTION:</b> STYLE: Bungalow	<b>STORIES:</b> 2 <b>DETACHED.</b>
<b>MATERIALS:</b> WALLS Brick	<b>ROOF:</b> Tiles <b>STRUCTURE:</b> Lb
<b>CONDITION:</b> Excellent	<b>INTACTNESS:</b> Excellent <b>THREATS:</b> —
<b>SIGNIFICANT INTACT ELEMENTS:</b> FORM. PORCH. ROOF FORM. ROOF DECORATION. CHIMNEYS. Pots. DOORS. WINDOWS. FENCE.	
<b>SIGNIFICANCE:</b>	
<b>TYPE:</b>	HISTORICAL. ARCHITECTURAL.
<b>LEVEL:</b>	LOCAL.
<b>DESIGNATION EXISTING:</b>	PLANNING SCHEME.
<b>RECOMMENDED CONTROL:</b>	PLANNING SCHEME.
<b>OBSCURED.</b>	<b>SURVEY:</b> RP <b>DATE:</b> 16.3.1997 <b>NEGS:</b> 12.26 & 1279.22



SKENE STREET



RP 16.3.97 NTS.

**HISTORY:** Built in 1925, this house was on land measuring 54' x 140' and owned by the Eastwoods. In 1935 the Eastwood Estate were the owners while Charles Eastwood, retired, lived in the house.<sup>1</sup>

**VISUAL DESCRIPTION:** An unusually plain red brick double-storey Californian Bungalow. The broad gable faces, with a gabled wing at left-side rear. In the angle is a small porch, but the main entry is centre front: both have flat roofs, supported on plain brick piers; a balustrade at front. Over at front is a segmental head window. The roof has terracotta Marseilles tiles unglazed, with finials. Chimneys have brick friezes and terracotta pots. At left are two rectangular bay windows. Upper sashes are leadlight. The fence is brick with unusual wire mesh in a tubular steel subframe, between brick piers. There is a gable-roofed garage.

**SIGNIFICANCE:** A particularly intact and unusually plain, brick Californian Bungalow built in 1925. It is locally architecturally significant as characteristic of this domestic style and historically as embodying family life in 1920s Newtown.

**INTACTNESS:** Excellent.

**CONDITIONS & THREATS:** Excellent.

---

<sup>1</sup> City of Newtown and Chilwell Ratebooks.