

**NEWTOWN URBAN CONSERVATION STUDY. - 'C' CITATIONS. Ref: 208**  
Richard Peterson Architect & Conservation Consultant. 1997.

<b>NAME:</b> Leicester
<b>ADDRESS:</b> 15 Skene Street
<b>USE:</b> House
<b>SIGNIFICANT DATE:</b> <b>CONSTRUCTION DATE:</b> 1936 <b>SOURCE:</b> 1
<b>DESIGNER:</b> — <b>BUILDER:</b> —
<b>CRITERIA:</b> H1; Ar1 <b>HISTORIC THEME:</b> 2.3
<b>DESCRIPTION:</b> <b>STYLE:</b> Bungalow <b>STORIES:</b> 2 <b>DETACHED.</b>
<b>MATERIALS:</b> <b>WALLS</b> Brick <b>ROOF</b> Tiles <b>STRUCTURE</b> Lb
<b>CONDITION:</b> Very good <b>INTACTNESS:</b> Excellent <b>THREATS:</b> —
<b>SIGNIFICANT INTACT ELEMENTS:</b> FORM. FACADE. PORCH. ROOF FORM. GABLE DECORATION. CHIMNEYS. DOORS. WINDOWS. PAINTWORK SCHEME. UNPAINTED FINISH. OUTBUILDING. FENCE.
<b>SIGNIFICANCE:</b>
<b>TYPE:</b> HISTORICAL. ARCHITECTURAL.
<b>LEVEL:</b> LOCAL.
<b>DESIGNATION EXISTING:</b> <b>PLANNING SCHEME.</b>
<b>RECOMMENDED CONTROL:</b> <b>PLANNING SCHEME.</b>
<b>OBSCURED.</b> <b>SURVEY:</b> RP <b>DATE:</b> 16.3.1997 <b>NEGS:</b> 12.23,24 & 1279.19,20



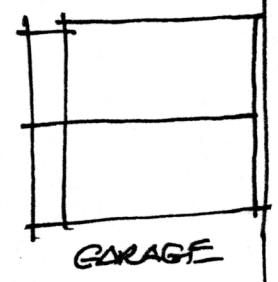
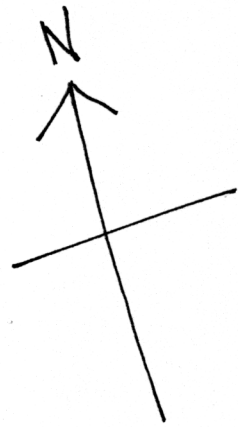
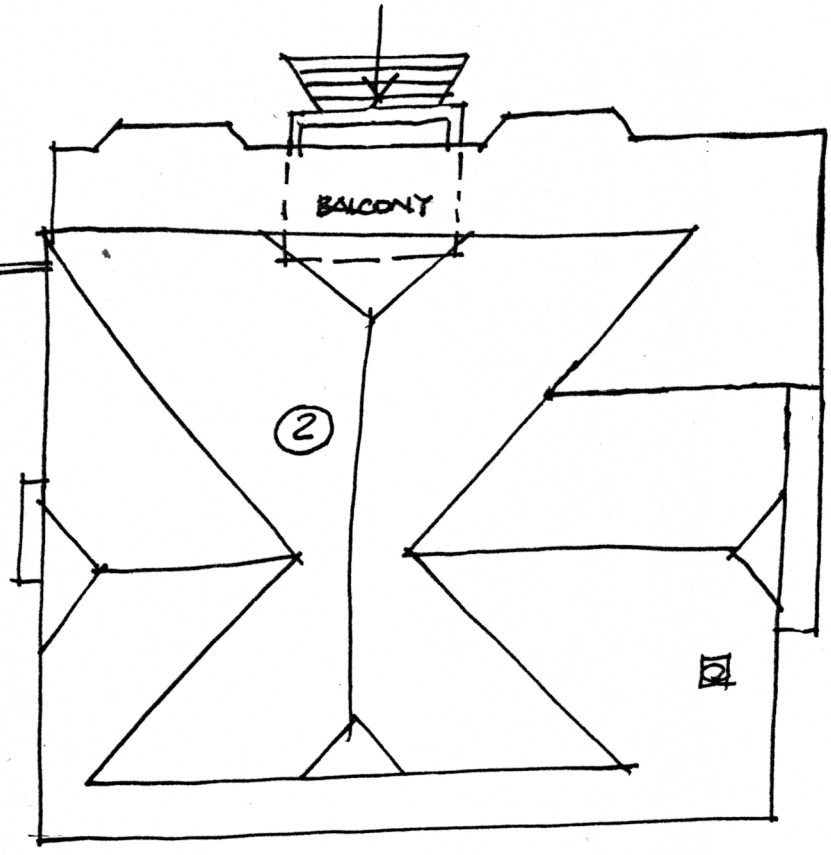
208



SKENE STREET

No. 15. LEICESTER.

(208)  
No. 1.



RP. 16.3.97 NTS.



**HISTORY:** In 1936 Thomas Fowler, a theatre proprietor, bought land measuring 59'8" x 141' from Arthur Walker. Fowler built a house at a cost of £2,181 (\$4,362) and was still listed as owner and occupier in 1940.<sup>1</sup>

**VISUAL DESCRIPTION:** A symmetrical clinker brick double-storey late Californian Bungalow with elements from the mid 1930s. It has a double-storey half-hipped roof facing, pierced by a deep half-hip across. Gables are timbered render on bullnosed brackets. At left the half-hip extends slightly as a gable. At front, are two canted bay windows with a recessed porch between piers supporting a balcony. At the right side is a flat window-hood on plain brackets. Upper sashes are clear leadlight geometric pattern. Chimneys have pots. The name is shown in large letters on the parapet. The fence is brick between piers.

**SIGNIFICANCE:** A relatively unusual and particularly intact late Californian Bungalow with elements from the mid-1930s, built in 1936. It is significant locally architecturally as evidence of the persistence of the Bungalow style well into the 1930s, and historically locally as embodying the affluent lifestyle of a show-business entrepreneur in Newtown in this period.

**INTACTNESS:** Excellent.

**CONDITIONS & THREATS:** Excellent.

---

<sup>1</sup> City of Newtown and Chilwell Ratebooks.