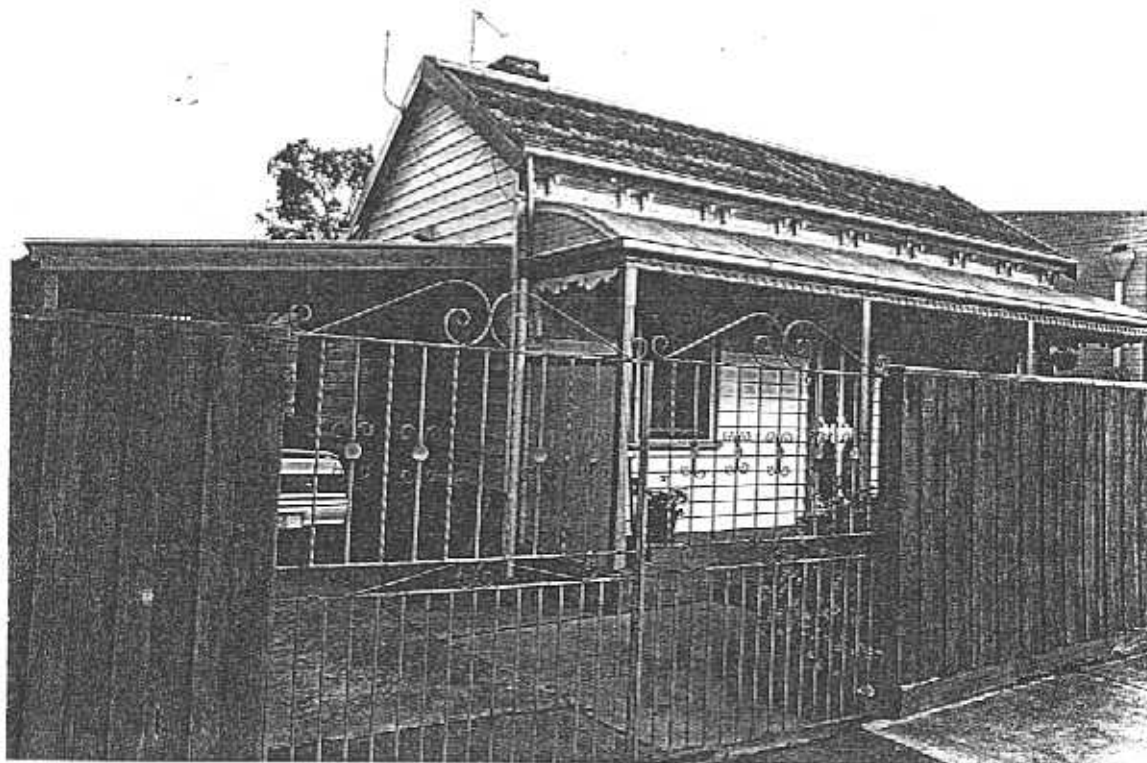


**NEWTOWN URBAN CONSERVATION STUDY. - 'C' CITATIONS. Ref: 206**

Richard Peterson Architect & Conservation Consultant, 1997.

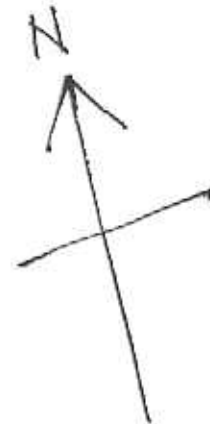
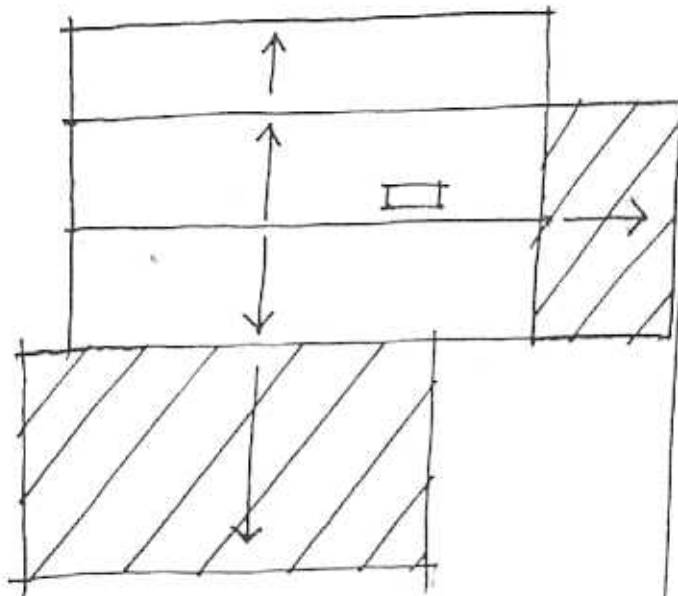
<b>NAME:</b> —	
<b>ADDRESS:</b> 13 Sharp Street	
<b>USE:</b> House	
<b>SIGNIFICANT DATE:</b>	<b>CONSTRUCTION DATE:</b> 1870 <b>SOURCE:</b> 1
<b>DESIGNER:</b> —	<b>BUILDER:</b> —
<b>CRITERIA:</b> H1; Ar1	<b>HISTORIC THEME:</b> 2.3
<b>DESCRIPTION:</b> <b>STYLE:</b> Italianate <b>STORIES:</b> 1 <b>DETACHED.</b>	
<b>MATERIALS:</b> <b>WALLS</b> Timber <b>ROOF</b> Slate <b>STRUCTURE</b>	
<b>CONDITION:</b> Very good <b>INTACTNESS:</b> Very good <b>THREATS:</b> —	
<b>SIGNIFICANT INTACT ELEMENTS:</b> MATERIALS. Slate. FORM. FACADE. VERANDAH. ROOF FORM. EAVES DECORATION. ROOF DECORATION. VERANDAH DECORATION. CHIMNEYS. DOOR. WINDOWS. PAINTWORK SCHEME.	
<b>SIGNIFICANCE:</b>	
<b>TYPE:</b>	HISTORICAL. ARCHITECTURAL.
<b>LEVEL:</b>	LOCAL.
<b>DESIGNATION EXISTING:</b>	PLANNING SCHEME.
<b>RECOMMENDED CONTROL:</b>	PLANNING SCHEME.
<b>OBSCURED.</b>	<b>SURVEY:</b> RP <b>DATE:</b> 16.3.1997 <b>NEGS:</b> 12,20,21; 1279.17



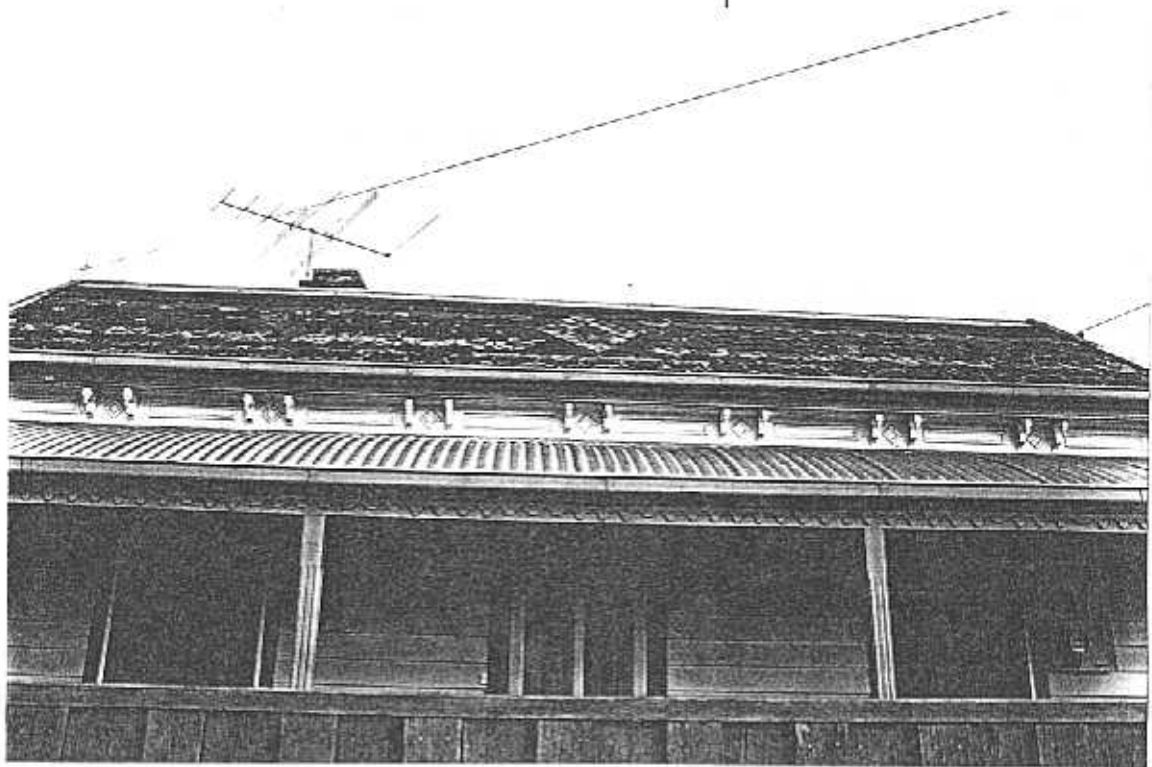
SHARP STREET

206

No 13



RP. 16.3.57 NTS



**HISTORY:** In 1870 two small timber buildings were built on this block and were owned and occupied by George Bailey, a labourer. About 1888 he sold them to Herbert Chaffey who leased them to Mrs Clara Julian. In 1890 Clarissa Julian was still the owner and occupier but the description was of a brick building, although the NAV had not changed from £6. The Julian family continued to own and occupy the house until at least 1925. By 1895 the description was of a timber and brick building with four rooms, but twenty years later, while the room number had not changed, the house was described as only timber.<sup>1</sup>

**VISUAL DESCRIPTION:** A double-fronted symmetrical timber<sup>2</sup> Italianate cottage. It has a gabled roof across, with a skillion at rear and a convex roofed verandah. This has a fine scalloped fretwork frieze and fretwork ends, which could Edwardian. There are pressed metal triangular panels and Regency stallboards.

The door is panelled with a fanlight. It has an eaves frieze with turned spindle ogee bracket pairs with lozenges and panels between over a mould. The *tour-de-force* is the spectacular roof cladding of slates with two rows of scalloped green slates and a central diamond of diamond-shaped green slates around a central grey diamond.

**SIGNIFICANCE:** A symmetrical timber Italianate cottage with a spectacular decorative slate roof, built in 1870. It has local architectural significance as representative of this domestic style and historically significant in embodying respectable working class family life in 1870s Newtown.

**INTACTNESS:** Very good. There is an inappropriate high fence, but a sympathetic carport at left and addition at rear. The verandah floor has been replaced with concrete. Verandah posts may be recent.

**CONDITIONS & THREATS:** Very good.

---

<sup>1</sup> City of Newtown and Chifwell Ratebooks.

<sup>2</sup> The description as 'brick' in the ratebooks must be incorrect.