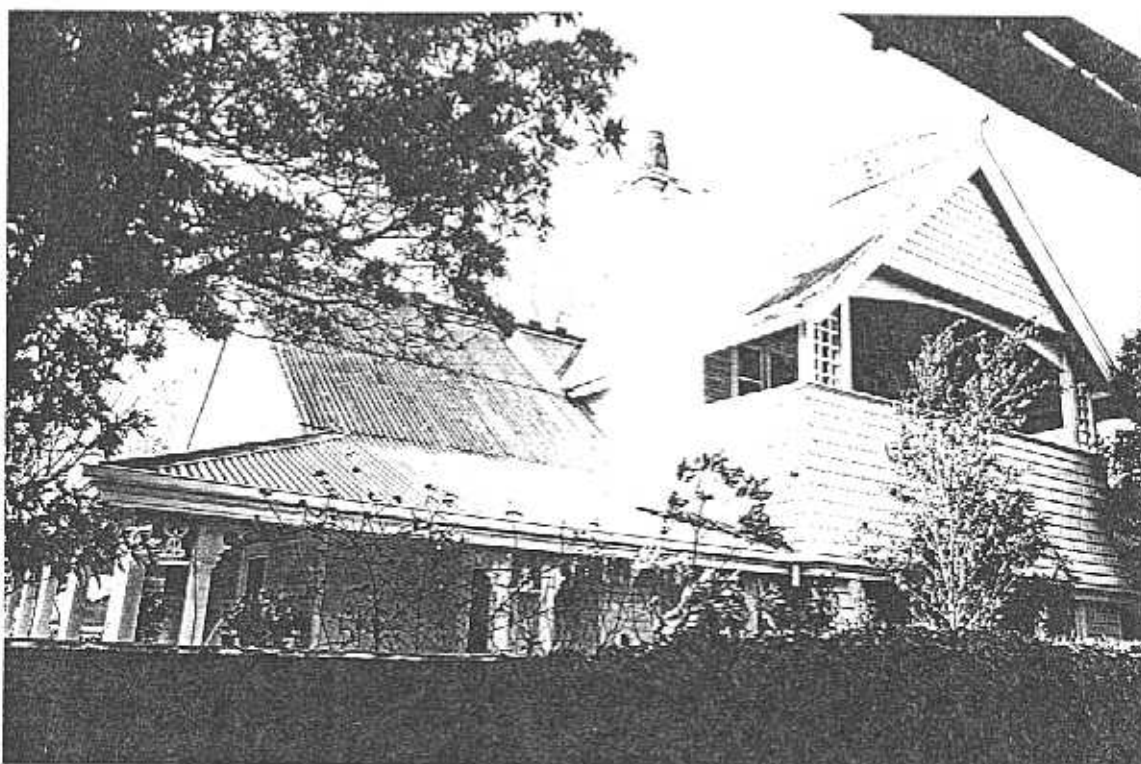


NEWTOWN URBAN CONSERVATION STUDY. - 'C' CITATIONS. Ref: 205

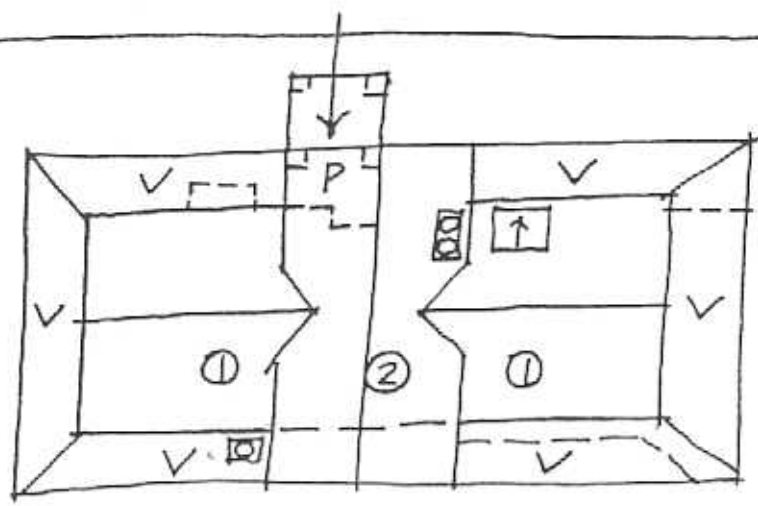
Richard Peterson Architect & Conservation Consultant. 1997.

NAME: Tandara	
ADDRESS: 352 Shannon Avenue (NE cor Noble Street)	
USE: House	
SIGNIFICANT DATE:	CONSTRUCTION DATE: 1910 SOURCE: 1
DESIGNER: —	BUILDER:
CRITERIA:	HISTORIC THEME:
DESCRIPTION: STYLE: Bungalow	STORIES: 2 DETACHED.
MATERIALS: WALLS Timber	ROOF Iron STRUCTURE Stud
CONDITION: Very good	INTACTNESS: Very good THREATS: Traffic
SIGNIFICANT INTACT ELEMENTS: FORM. FACADE. VERANDAH. Balcony. ROOF FORM. GABLE DECORATION. ROOF DECORATION. VERANDAH DECORATION. CHIMNEYS. DOORS. WINDOWS. NAMEPLATE. OUTBUILDING. CONTEXT Nos: 350, 347.	
SIGNIFICANCE:	
TYPE:	HISTORICAL. ARCHITECTURAL.
LEVEL:	LOCAL.
DESIGNATION EXISTING:	PLANNING SCHEME.
RECOMMENDED CONTROL:	PLANNING SCHEME.
OBSCURED.	SURVEY: RP DATE: 16.3.1997 NEGS: 12.19; 1279.14

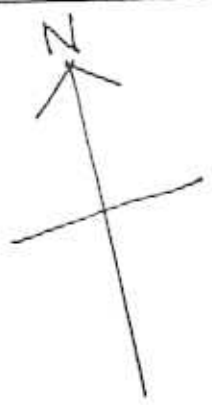


SHANNON AVENUE

No 352



NOBLE STREET



16.3.97 RP. NTS.

HISTORY: In 1910 John King, an estate agent, had this timber house built on his land measuring 147' x 198'. He sold the house c1915 to William Goddard, a solicitor, who lived there for a few years before selling to William Murphy, a builder. Around 1930 Murphy's estate rented the house to William Robinson before selling to Mary Gross. Gross continued to rent the house, although the tenant was Ernest Gross so she possibly lived there too. By 1958 Mr and Mrs Dickson had bought the property.¹

VISUAL DESCRIPTION: A large double-storey timber complex early Californian Bungalow. The major single-storey gable roof faces Shannon Street and is bisected by a double-storey gable terminating in a generous balcony facing Noble Street, its spandrel clad in shingles. A verandah extends right around the house, interrupted only by the central gable. It extends the main gable forward at break-pitch and is supported on column-pairs with incised bands, bases, fretwork brackets and curlicue fretwork panels. (Is the decoration recent?).

Ridges have crenellated metal cresting and curlicue finials. Chimneys have Voyseyan plate-tops with moulds, supported on ogee brackets and terracotta pots with Art Nouveau decoration. Upper gables have shingles jettied on ogee brackets. Windows are double-hung with spandrel panels.

There is a pressed copper nameplate. Entry is from the side to a projecting porch, where the posts are on red brick piers with a scooped brick balustrade. The entrance has a glazed, panelled door and leadlight fanlights. Adjacent, is a rectangular bay with leadlight upper lights in the four casements, in a geranium pattern.

SIGNIFICANCE: A large double-storey complex timber Californian Bungalow built as early as 1910. It is architecturally significant locally for its particularly early date, a pioneer of this domestic style of which it is otherwise a representative example of a relatively unusual, near symmetrical form. It is historically significant as the embodiment of comfortable professional middle class family life in Newtown prior to the Great War.

INTACTNESS: Very good.

CONDITIONS & THREATS: Very good.

¹ City of Newtown and Chilwell Ratebooks.