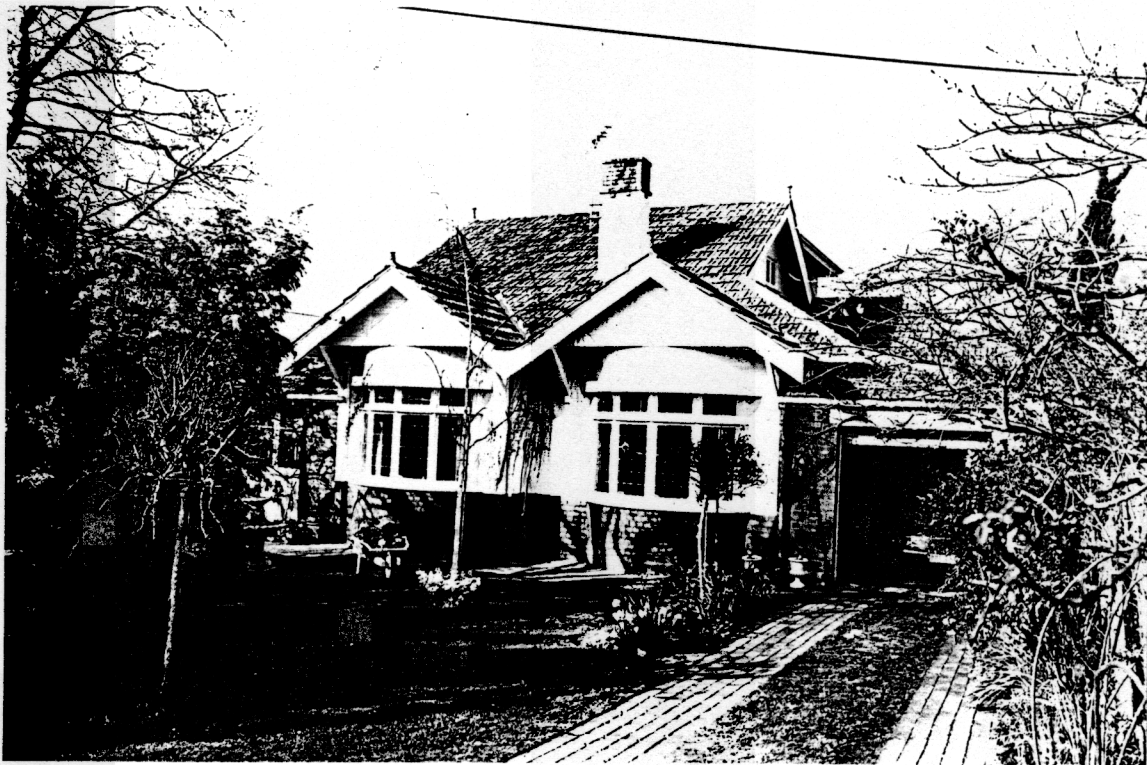


NEWTOWN URBAN CONSERVATION STUDY. - 'C' CITATIONS. Ref: 203

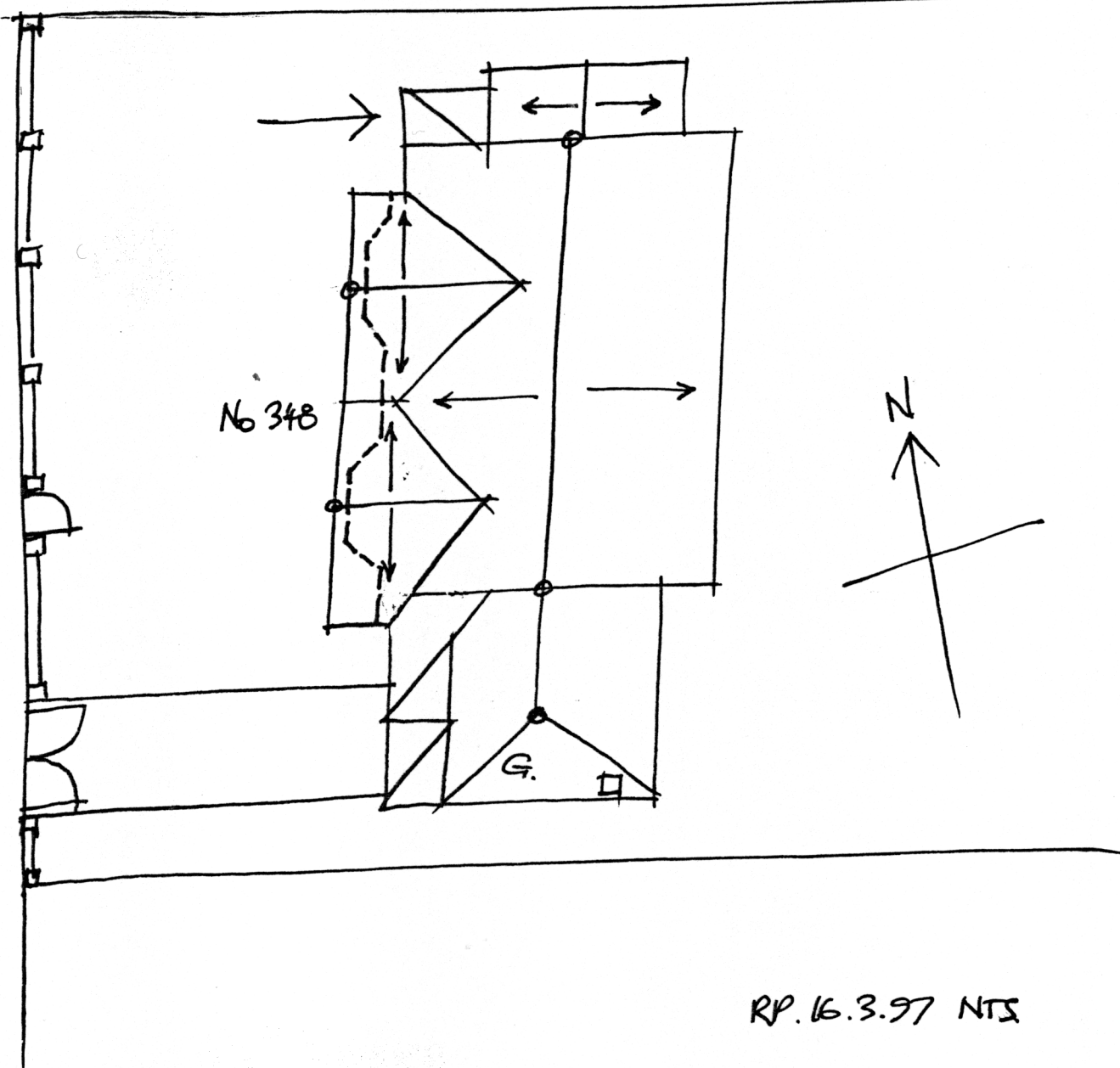
Richard Peterson Architect & Conservation Consultant. 1997.

NAME: —	
ADDRESS: 348 Shannon Avenue.	
USE: House	
SIGNIFICANT DATE:	CONSTRUCTION DATE: 1918 SOURCE: 1
DESIGNER: —	BUILDER: —
CRITERIA: H1; Ar1	HISTORIC THEME: 2.3
DESCRIPTION: STYLE: Edwardian STORIES: 2 DETACHED.	
MATERIALS: WALLS Brick ROOF Tiles STRUCTURE Lb	
CONDITION: Very good INTACTNESS: Very good THREATS: Traffic	
SIGNIFICANT INTACT ELEMENTS: FORM. FACADE. ROOF FORM. GABLE DECORATION. ROOF DECORATION. CHIMNEYS. WINDOWS. FENCE. CONTEXT No: 345. TREES.	
SIGNIFICANCE:	
TYPE:	HISTORICAL. ARCHITECTURAL.
LEVEL:	LOCAL.
DESIGNATION EXISTING:	PLANNING SCHEME.
RECOMMENDED CONTROL:	PLANNING SCHEME.
OBSCURED.	SURVEY: RP DATE: 16.3.1997 NEGS: 12.19 & 1279.14



LANE

SHANNON AVENUE



RP. 16.3.97 NTS

HISTORY: Robert Cranstoun had this brick house built in 1918 on his land measuring 66' x 136'9". By 1925 he had sold it to Thomas David who was first a teacher, then an accountant. The Davids lived there until c1970 when Thomas' widow sold the house to Mr and Mrs Williams.¹

VISUAL DESCRIPTION: A charming double-storey red brick late Edwardian house, with some elements transitional to the Bungalow style. There is a major double storey gable across, with a minor gable nested at left and a hip over the entrance, in the angle. A hip extends to right, nested at front by two minor hips: one over a garage (which appears to be original?).

Unusually at front, a symmetrical pair of gables project. The upper gables are timbered and jetty on palisaded brackets. Below are bow windows, with four casements each. Upper lights are leadlight, lower are rectangular leadlight panes. The roof is Marseilles unglazed terracotta tiles and finials. The chimney is rendered, its frieze brick. Walls generally are roughcast, with a tuckpointed brick dado. The fence is brick with clinker caps to its piers. There are mature Maple (*Acer*) and Birch (*Betula*) trees.

SIGNIFICANCE: A charming double-storey brick late Edwardian house, built in 1918, with some elements transitional to the Bungalow style. It is architecturally significant as an unusual almost symmetrical representative of this style and historically as an embodiment of comfortable middle class life built despite restrictions, immediately following the Great War. If the garage is original it is a highly significant part of the building.

INTACTNESS: Very good. Fences have been altered. If the garage has been inserted recently, it is most sympathetic.

CONDITIONS & THREATS: Very good.

¹ City of Newtown and Chilwell Ratebooks.