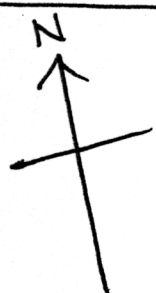
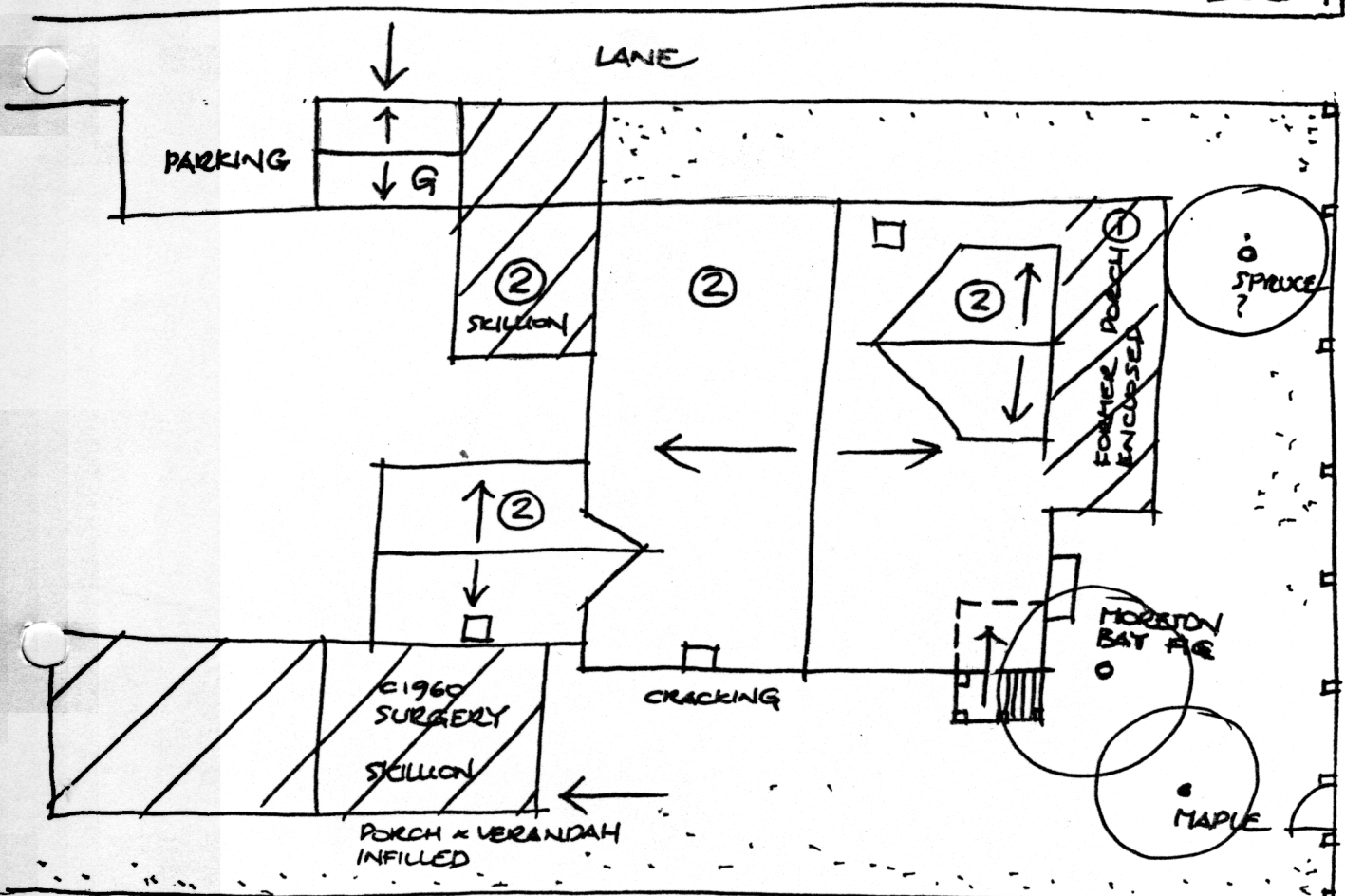


NEWTOWN URBAN CONSERVATION STUDY. - 'C' CITATIONS. Ref: 201

Richard Peterson Architect & Conservation Consultant. 1997.

NAME: Dr Bruce H Guaran
ADDRESS: 346 Shannon Avenue.
USE: House & surgery
PREVIOUS USE: House
SIGNIFICANT DATE: CONSTRUCTION DATE: 1924 SOURCE: 1
DESIGNER: — BUILDER: Frank Apted
CRITERIA: H1; Ar1 HISTORIC THEME: 2.3
DESCRIPTION: STYLE: Bungalow STORIES: 2 DETACHED.
MATERIALS: WALLS Roughcast ROOF Tiles STRUCTURE Lb
CONDITION: Good INTACTNESS: Good THREATS: Soil movement, traffic
SIGNIFICANT INTACT ELEMENTS: MATERIALS. Cindcrete & tiles. FORM. FACADE. ROOF FORM. GABLE DECORATION. CHIMNEYS. WINDOWS. OUTBUILDING. FENCE. GATES. CONTEXT Nos: 344 etc. TREES.
SIGNIFICANCE:
TYPE: HISTORICAL. ARCHITECTURAL.
LEVEL: LOCAL.
DESIGNATION EXISTING: PLANNING SCHEME.
RECOMMENDED CONTROL: PLANNING SCHEME.
OBSCURED. SURVEY: RP DATE: 16.3.1997 NEGS: 12.13,14; & 1279.10,11





RP 16.3.97. NTS



HISTORY: This house was built in 1924 by Frank Apted, a builder, on land measuring 66' x 132'. That same year he bought another 68' of land, bringing the block size to 66' x 200'. In the 1930s he sold to Elder Smith & Co. who rented the house to William Monfries, a manager. By 1950 Thomas Fleetwood was the owner and occupier, but c1960 he sold the house to Mr Guaran, a medico.¹

Concrete blocks made from cinder concrete or "seasoned coke breeze" of 460 X 150 X 51-150mm, were known as breeze blocks. These were introduced in Victoria by W H Swanton (later Swanton-Barrett Pty Ltd) after the Great War. This plant, in Ingles Street, Port Melbourne used cinders, a by-product of the local gas company. Plant was imported from Germany. The blocks were used in the State Savings Bank's Garden City development, various other houses and after World War II for commercial buildings and the Childrens Hospital, Melbourne. Production ended in 1975.²

VISUAL DESCRIPTION: A double-storey Californian Bungalow of roughcast and rendered Cindcrete breeze blocks. There is a major double-storey gable across, extending forward at right as an (infilled) verandah. Roofs are clad in unusual flat terracotta tiles. An attic gable faces at front, clad with shingles, including a skillion window hood to the far sashes. Over, are three slot vents.

At rear left, a further gable projects. The former entrance porch (now infilled) is in the front left angle with an archway. Next to it at front is an oriel with a splayed spandrel on plain brackets. Next are small leadlights with C.R. Mackintosh-influenced patterns.

The fence is also Cindcrete roughcast, with a mild steel pedestrian gate with curlicue decoration. Chimneys are plain roughcast expressed. At rear is a gabled garage of exposed Cindcrete blocks.

COMPARATIVE ANALYSIS: Other Cindcrete houses in Geelong include: teachers' houses at Geelong Grammar and three houses in Shannon Avenue between Queens Road and Aphasia Street.³

SIGNIFICANCE: A double-storey Californian Bungalow of rendered and roughcast Cindcrete cinder breeze blocks built in 1924. It is architecturally significant locally as representative of this domestic style in a larger house and for its extensive use of the technologically interesting Cindcrete blocks by its builder / owner. It is historically significant in embodying comfortable middle class life in Newtown in the mid-1920s.

¹ City of Newtown and Chilwell Ratebooks.

² From material kindly supplied by Dr Miles Lewis and conversation with Dr Bruce Guaran.

³ Dr Guaran