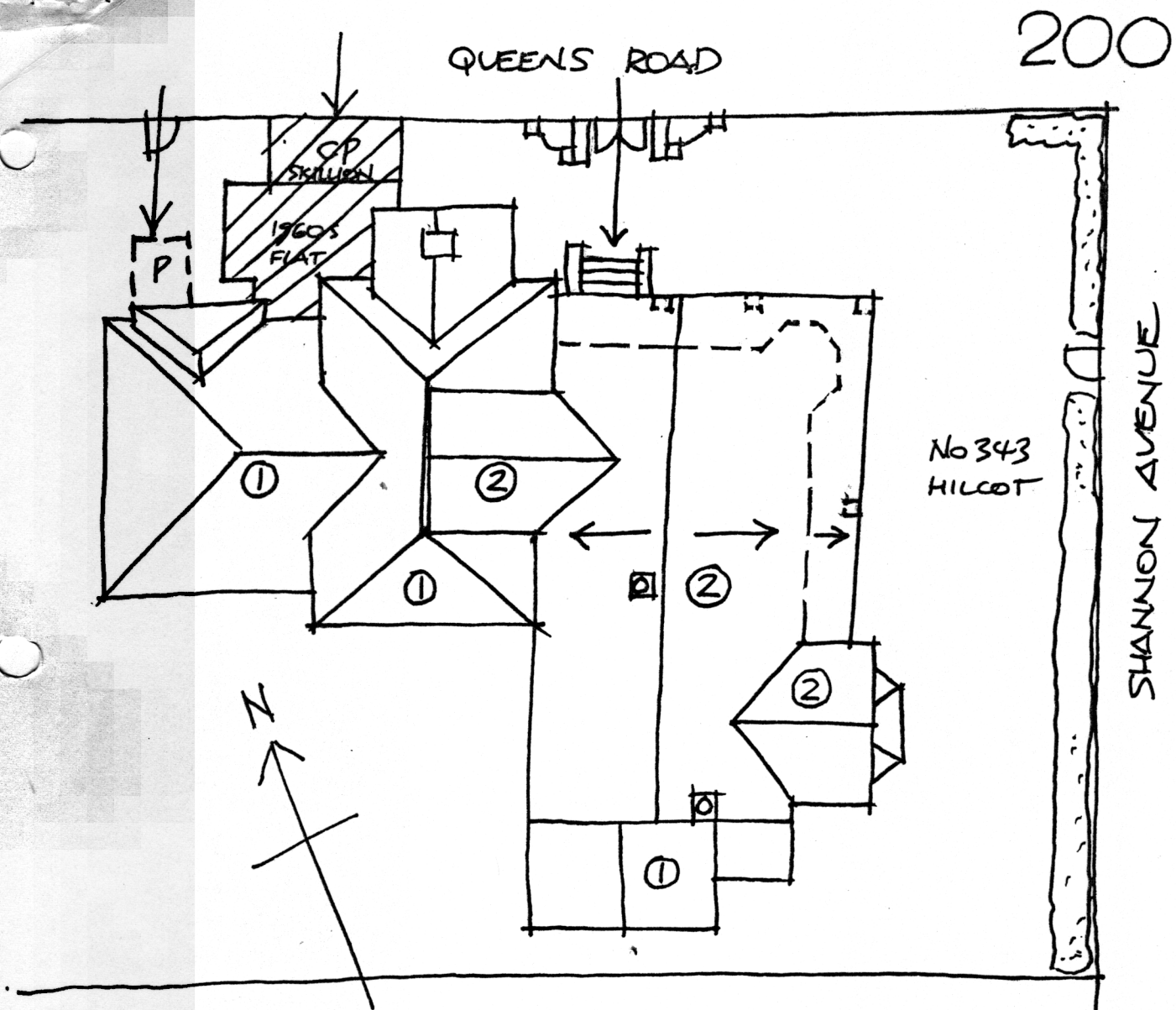


NEWTOWN URBAN CONSERVATION STUDY. - 'C' CITATIONS. Ref: 200
 Richard Peterson Architect & Conservation Consultant. 1997.

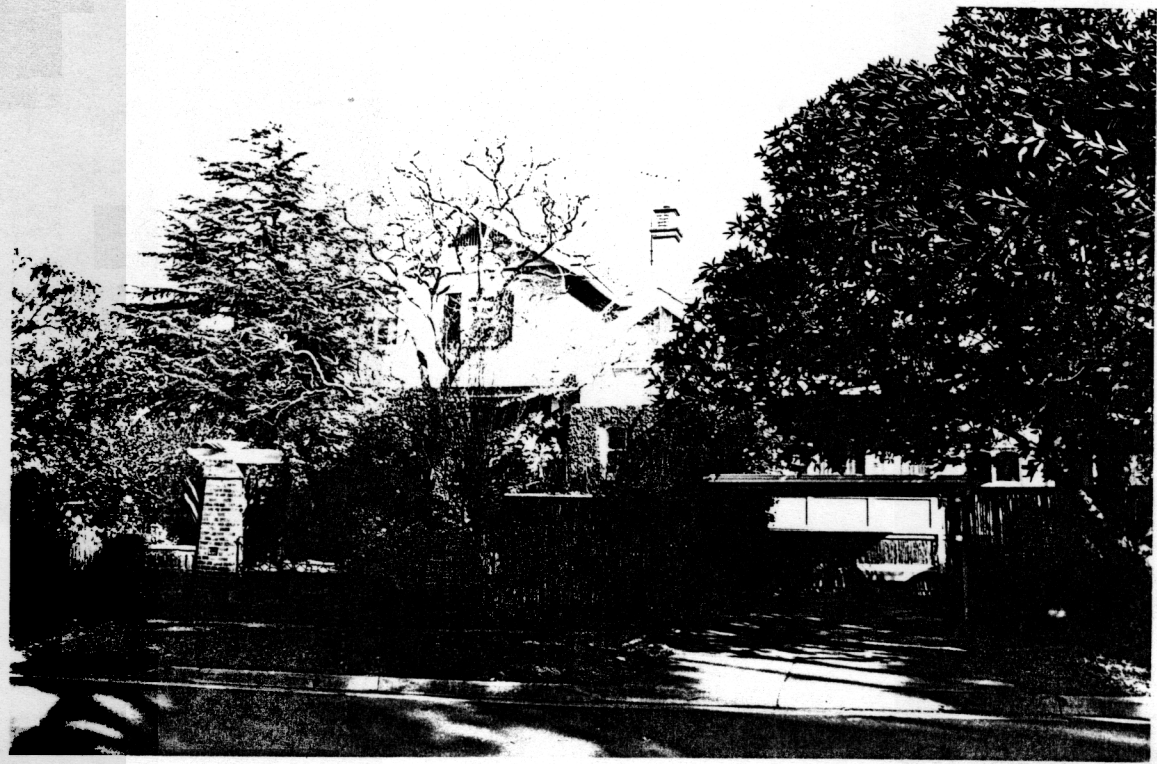
NAME: Hilcot	
ADDRESS: 343 Shannon Avenue (S.W. cnr Queen's Road)	
USE: House (?)	
PREVIOUS USE: House	
SIGNIFICANT DATE:	CONSTRUCTION DATE: 1910 SOURCE: 1
ALTERATIONS/ADDITIONS.	DATE: ?? SOURCE:
DESIGNER: —	BUILDER: —
CRITERIA: H1; Ar1	HISTORIC THEME: 2.3
DESCRIPTION: STYLE: Bungalow	STORIES: 2 DETACHED.
MATERIALS: WALLS Brick	ROOF: Tiles STRUCTURE: Lb
CONDITION: Very good	INTACTNESS: Good THREATS: —
SIGNIFICANT INTACT ELEMENTS:	
FORM. FACADE. ROOF FORM. GABLE DECORATION. ROOF DECORATION. Fish caps. CHIMNEYS. Pots. WINDOWS. GATES. HEDGE. CONTEXT Nos: 346 etc. TREES.	
SIGNIFICANCE:	
TYPE:	HISTORICAL. ARCHITECTURAL.
LEVEL:	LOCAL.
DESIGNATION EXISTING:	PLANNING SCHEME.
RECOMMENDED CONTROL:	PLANNING SCHEME.
OBSCURED.	SURVEY: RP DATE: 16.3.1997 NEGS: 12.12 1279.8,9





RP 16.3.97 NTS.

/// RECENT ① SONES.



HISTORY: Ebenezer Hendy, an auctioneer, had this brick house built in 1910 on land measuring 100' x 198'. Three years later he bought an extra 200' of land, then again in 1915, he bought the adjoining block on Queens Road(?) which measured 66' x 165'. In 1920 he sold the whole lot to Alexander Cunningham, an engineer. Forty years later, the Cunninghams were still registered as the owners and occupiers, although by 1940 the Shannon Avenue block had reduced to 100' x 198'.¹

VISUAL DESCRIPTION: A large double-storey brick complex Californian Bungalow. There is a major gable across, nesting with a single-storey gable at left. A minor double-storey gable then projects with a canted bay window with four large convex wavy palisade brackets. Up to this, the skillion-roofed double-storey verandah extends, infilled at first floor level, supported on clinker brick piers returning to face Queens Road, at the right side. At the angle is an octagonal bay. It terminates at a single-storey gable projecting to Queens Road, with the entrance in the angle. This has a segmental head and steps are dressed bluestone.

The roof is terracotta unglazed Marseilles pattern tiles. Chimneys are rendered, with a red brick frieze, brick moulds and Art Nouveau decorated terracotta pots. Ridges terminate in unusual fish-head caps, for instance over the entrance. Upper gables extend on deep coved brackets, with a palisaded vent over shingles, jetting on triple bullnosed brackets, then roughcast and shingles again, splaying.

The side gable has large convex brackets, with decorative fretwork and a most unusual fretwork central bracket. At rear is a fine 1960s Modernist extension with a flat roof. The Queens Road entrance is clinker brick piers with a soldier course, slots and caps, supporting a pergola with crossed rafters and geometric mild steel vehicular and pedestrian gates. There is a major hipped roof wing at rear. There are several mature trees and a boundary hedge.

SIGNIFICANCE: A large double-storey complex Californian Bungalow built in about 1920, with a fine 1960s Modernist extension and various contextual elements including mature trees and hedge. It is architecturally significant locally as a characteristic early representative of this domestic style, with several interesting details including the ridge caps, brackets and pots. It is historically significant in embodying affluent family life in the early 1920s and the developing needs of one family over at least forty years.

INTACTNESS: Good. All of the external originally unpainted surfaces (except chimneys) have now been painted. Additions are generally relatively sympathetic.

CONDITIONS & THREATS: Very good.

¹ City of Newtown and Chilwell Ratebooks.