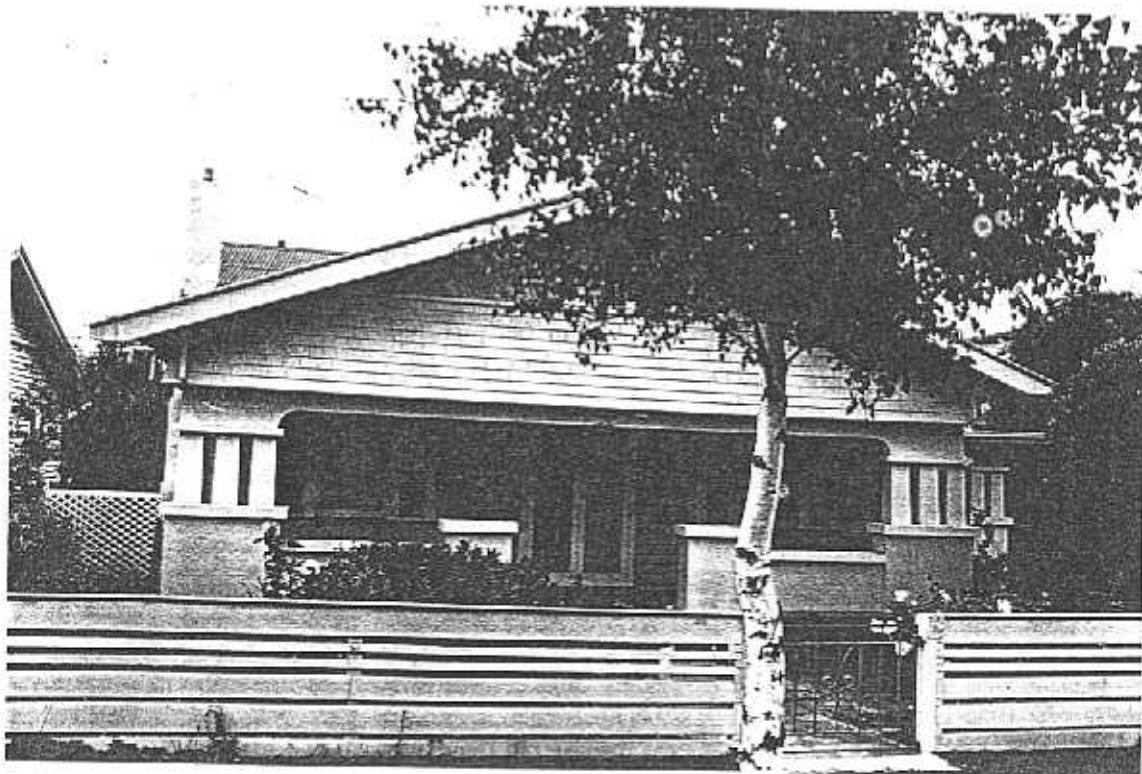
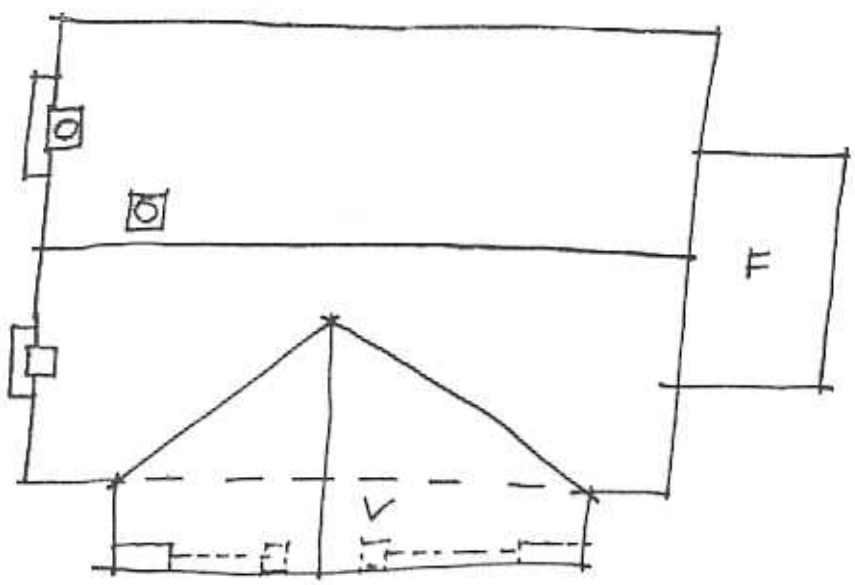


**NEWTOWN URBAN CONSERVATION STUDY. - 'C' CITATIONS. Ref: 183**

Richard Peterson Architect & Conservation Consultant, 1997.

<b>NAME:</b> —	
<b>ADDRESS:</b> 24 Roebuck Street	
<b>USE:</b> House	
<b>SIGNIFICANT DATE:</b>	<b>CONSTRUCTION DATE:</b> 1924 <b>SOURCE:</b> 1
<b>DESIGNER:</b> —	<b>BUILDER:</b> —
<b>CRITERIA:</b> H1; Ar1	<b>HISTORIC THEME:</b> 2.3
<b>DESCRIPTION:</b> STYLE: Bungalow	STORIES: 1      DETACHED.
<b>MATERIALS:</b> WALLS Timber	ROOF Iron      STRUCTURE Stud
<b>CONDITION:</b> Very good	INTACTNESS: Excellent      THREATS: —
<b>SIGNIFICANT INTACT ELEMENTS:</b>	
FORM. FACADE. VERANDAH. Solarium. ROOF FORM. GABLE DECORATION. VERANDAH DECORATION. CHIMNEYS. Pots. DOORS. WINDOWS. FENCE. GATES. CONTEXT No: 26. TREE. Cumquat.	
<b>SIGNIFICANCE:</b>	
<b>TYPE:</b>	HISTORICAL. ARCHITECTURAL.
<b>LEVEL:</b>	LOCAL.
<b>DESIGNATION EXISTING:</b>	PLANNING SCHEME.
<b>RECOMMENDED CONTROL:</b>	PLANNING SCHEME.
<b>SURVEY:</b> RP	<b>DATE:</b> 15.3.1997 <b>NEGS:</b> 8.32 & 1279.30





No 24.

ROEBUCK STREET.



NTS 15.3.97 RP.

**HISTORY:** Charles Ekskedt, a manager, bought land measuring 64'8" x 105' in 1924 and the following year had a timber house built on it. He lived in it for a few years before renting it out to Claude Backwell, a medical practitioner. Around 1940 Marie Thompson bought the house but rented it out to Ethel Searle. Thompson moved in a few years later but then sold to Herbert & Sheila Oakley in 1955.<sup>1</sup>

**VISUAL DESCRIPTION:** A generally symmetrical double-fronted timber Californian Bungalow, with a broad major gable across. An even wider gable projects at front over the verandah to full width. This is supported on pairs of purlins near the ridge. The upper section is roughcast, with a rectangular louvred vent with its own small hood on coved brackets, with shingles below, splaying at their base and three block brackets.

The transom curves down(?) over triple square columns with plate capitals, over a rendered balustrade. Windows are tripartite Chicago-type and doors are double. Chimneys at left, are expressed, roughcast plain. At right is a flat-roofed solarium. The fence of thick and thin horizontal boards has mild steel gates.

**COMPARATIVE ANALYSIS:** It is comparable to no. 26 (ref: 185) Roebuck Street.

**SIGNIFICANCE:** A characteristic and particularly intact timber Californian Bungalow built in 1925. It is architecturally significant locally as representative of this domestic style and historically significant in embodying family life in Newtown between the wars.

**INTACTNESS:** Excellent

**CONDITIONS & THREATS:** Very good.

---

<sup>1</sup> City of Newtown and Chilwell Ratebooks.