

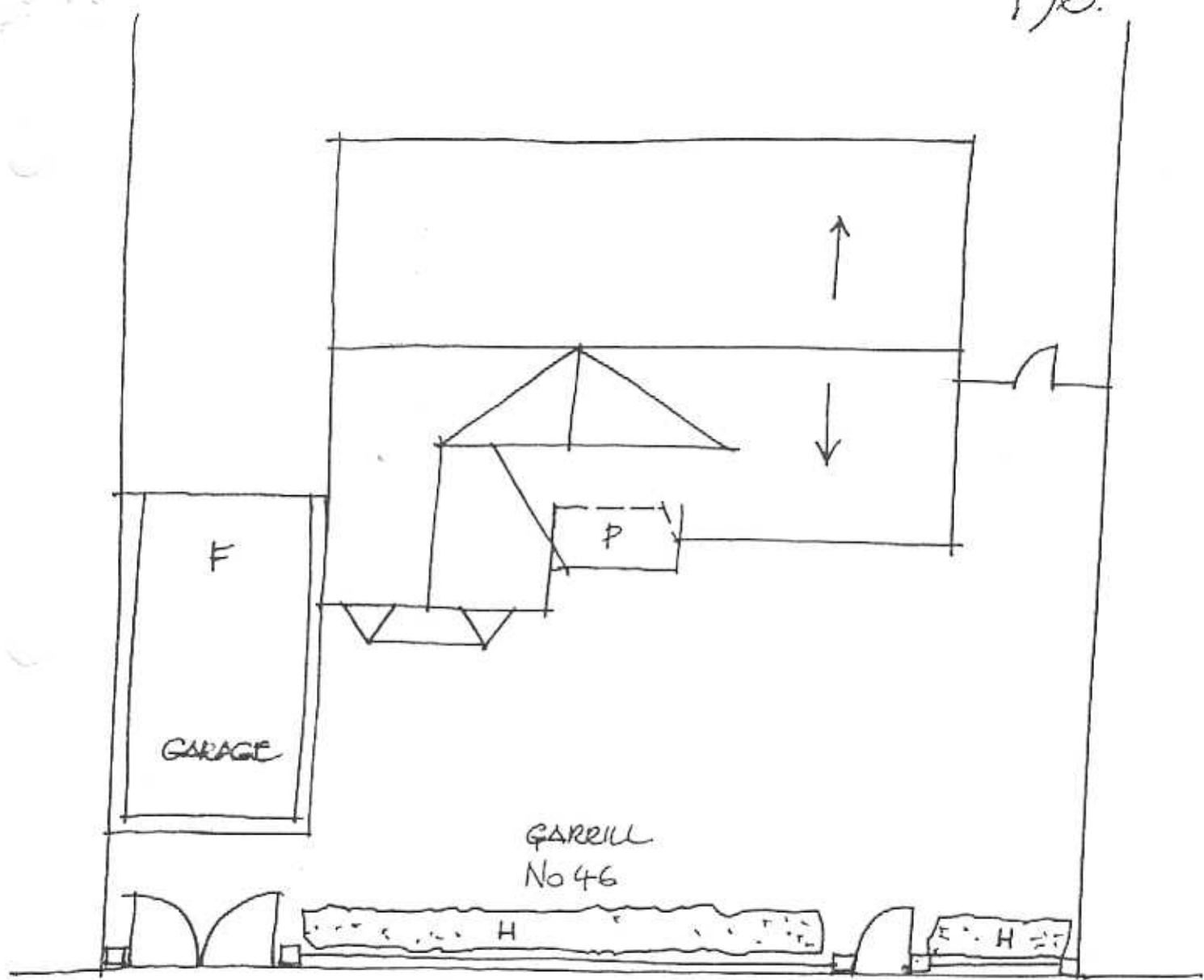
NEWTOWN URBAN CONSERVATION STUDY. - 'C' CITATIONS. Ref: 196

Richard Peterson Architect & Conservation Consultant. 1997.

NAME: Garrill	
ADDRESS: 46 Roebuck Street	
USE: House	
SIGNIFICANT DATE:	CONSTRUCTION DATE: 1937 SOURCE: 1
DESIGNER: —	BUILDER:
CRITERIA: Ar1; H1	HISTORIC THEME: 2.3
DESCRIPTION: STYLE: English cottage	STORIES: 2 DETACHED.
MATERIALS: WALLS Brick	ROOF: Tiles STRUCTURE: Lb
CONDITION: Excellent	INTACTNESS: Excellent THREATS: —
SIGNIFICANT INTACT ELEMENTS: MATERIALS. Wall tiles. FORM. FACADE. PORCH. ROOF FORM. GABLE DECORATION. CHIMNEY. DOOR. WINDOWS. PAINTWORK SCHEME. NAMEPLATE. OUTBUILDING. Garage. FENCES. GATES. HEDGE. GARDEN.	
SIGNIFICANCE:	
TYPE:	HISTORICAL. ARCHITECTURAL.
LEVEL:	LOCAL.
DESIGNATION EXISTING:	PLANNING SCHEME.
RECOMMENDED CONTROL:	PLANNING SCHEME.
OBSCURED.	SURVEY: RP DATE: 16.3.1997 NEGS: 12.7; 1279.5



196.



GARRILL
No 46

KOEBUCK STREET.



Richard Peterson Architect & Conservation Consultant 1997.

HISTORY: In 1937 Charles Smith, fellmonger, bought land measuring 67' x 98' and built that year. He was still living there in 1961.¹

VISUAL DESCRIPTION: A rare (in Newtown) brick double-fronted English Cottage style gable-roofed house with English Arts and Crafts Movement influences. It has a broad gabled roof across, with a minor gable at centre facing, housing the attic. At left, a third gable projects with a canted bay window and roofed with flat glazed tiles. Roof tiles are glazed Marseilles pattern, but the attic gable is clad with the flat tiles also hung on its face.

Otherwise walls are clinker bricks. Chimneys have corbelled tops with a frieze course. Gables have rectangular vents, the left one being formed of the flat tiles. Windows are six-paned sashes in groups of five. A skillion extends over the recessed porch, supported on a curved timber bracket in the Old English manner. The door has upper side-lights. The porch has glazed pantiles and a Medievalising iron lamp bracket. The name is signwritten over the porch.

The garden is appropriate to the period, with perimeter and central oval beds in lawn. A variegated privet (*Ligustrum*) hedge is over the solid brick fence, penetrated with half brick slots is also formed with the flat tiles. An attached garage has a parapet and concertina glazed doors. A side fence is lattice and lathe.

SIGNIFICANCE: A particularly intact and rare (for Newtown) English Cottage Style brick house with English Arts and Crafts Movement influences, with several contextual elements including the rare garden surviving. It is architecturally significant as an extraordinary example of this domestic architectural style and planting, in demonstrating fine craftsmanship and use of materials, and as a rare and intact survival. It is historically significant as a time capsule, an extraordinary embodiment of the way of life of a comfortable middle class Newtown family immediately prior to the catastrophe of World War II.

INTACTNESS: Excellent. Entirely intact.

CONDITIONS & THREATS: Excellent. Some tiles are slipping and need maintenance.

¹ City of Newtown and Chilwell Ratebooks.