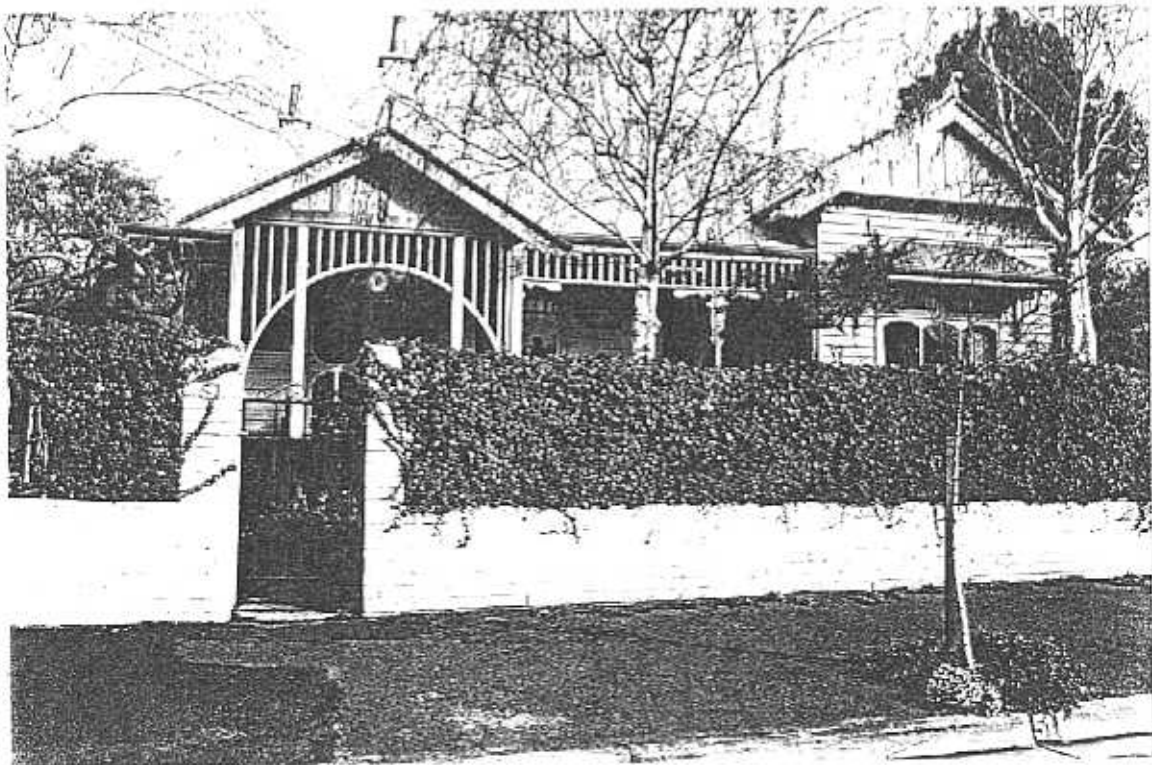


**NEWTOWN URBAN CONSERVATION STUDY. - 'C' CITATIONS. Ref: 197**

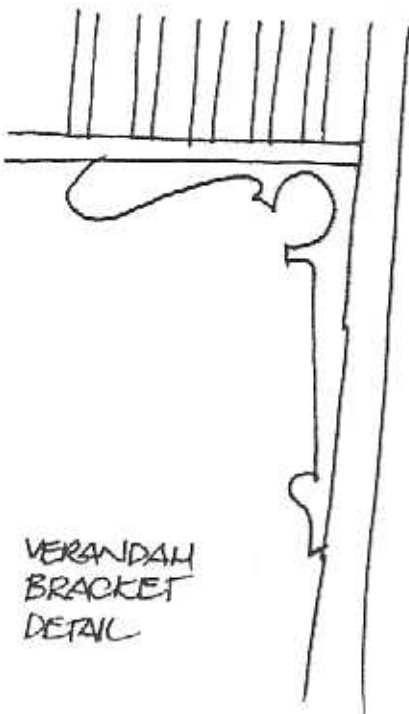
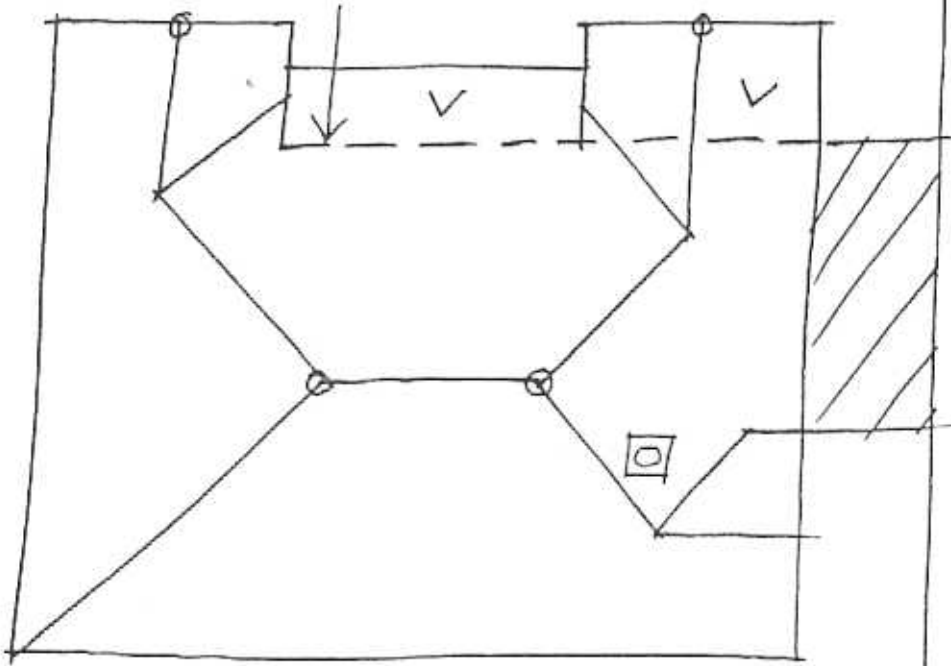
Richard Peterson Architect & Conservation Consultant. 1997.

<b>NAME:</b> ? (obscured)	
<b>ADDRESS:</b> 51 Roebuck Street	
<b>USE:</b> House	
<b>SIGNIFICANT DATE:</b>	<b>CONSTRUCTION DATE:</b> 1912 <b>SOURCE:</b> 1
<b>DESIGNER:</b> —	<b>BUILDER:</b> —
<b>CRITERIA:</b> H1; Ar1	<b>HISTORIC THEME:</b> 2.3
<b>DESCRIPTION:</b> STYLE: Edwardian	<b>STORIES:</b> 1 <b>DETACHED.</b>
<b>MATERIALS:</b> WALLS Timber	<b>ROOF:</b> Iron <b>STRUCTURE:</b> Stud
<b>CONDITION:</b> Excellent	<b>INTACTNESS:</b> Very good <b>THREATS:</b> —
<b>SIGNIFICANT INTACT ELEMENTS:</b> FORM. FACADE. VERANDAH. ROOF FORM. ROOF DECORATION. VERANDAH DECORATION. CHIMNEY. Pot. DOOR. WINDOWS. WINDOWS. NAMEPLATE.	
<b>SIGNIFICANCE:</b>	
<b>TYPE:</b>	HISTORICAL. ARCHITECTURAL.
<b>LEVEL:</b>	LOCAL.
<b>DESIGNATION EXISTING:</b>	PLANNING SCHEME.
<b>RECOMMENDED CONTROL:</b>	PLANNING SCHEME.
<b>OBSCURED.</b>	<b>SURVEY:</b> RP <b>DATE:</b> 16.3.1997 <b>NEGS:</b> 12.8; 1279.6

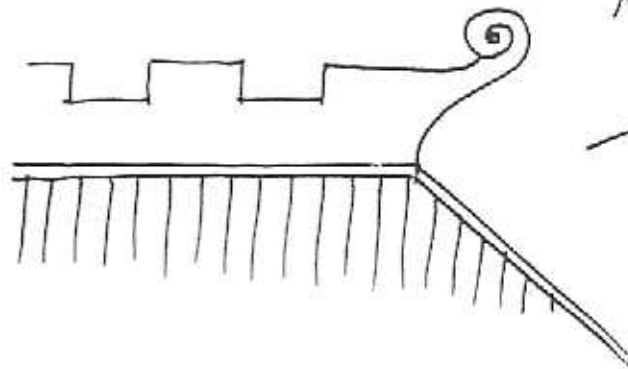


ROEBUCK STREET

No 51



VERANDAH  
BRACKET  
DETAIL



RIDGE  
DETAIL.

RP 16. 3. 97 NTS



*Richard Peterson Architect & Conservation Consultant 1997.*

**HISTORY:** Valentine Nosedá bought a 120' block of vacant land, subdivided it into three blocks, and had a timber house with seven rooms built in 1912. The house was kept for a year before being sold to Howard Richardson, an accountant, in 1913. Richardson lived here for approximately fifteen years before selling to Robert Mockridge, an engineer. The Mockridge family still lived in the house in 1961. In the 1920s, the first land measurements were given of 60'6" x 110' and, in 1925, the street number changed from 49 to 51 Elizabeth Street.<sup>1</sup>

**VISUAL DESCRIPTION:** A triple-fronted timber Edwardian house with a hipped roof. Gables face at left and right. The verandah extends across to the right gable and under the left. Upper gables are pressed metal, roughcast pattern and timbered; at right, jettied on ogee brackets with a hipped ripple-iron hood on deep ogee fretwork brackets.

There are unusually bold pressed metal fern-frond finials and crenellated cresting. Barges are fretwork. The verandah has palisade and some lattice decoration and at left a broad arch. Brackets are Art Nouveau fretwork. Posts have vertical grooves. Window lights are leadlight. The entrance door is glazed with a sidelight and fanlight, all leadlight. There is a pressed copper nameplate. Chimneys have friezes and tall terracotta unglazed pots.

**SIGNIFICANCE:** A relatively unusual Edwardian timber house type, with some Art Nouveau decorative elements, built in 1912. It is architecturally significant as a variant of this domestic style, the finials being of particular interest and of historical significance in embodying the comfortable family way of life in Newtown immediately prior to the Great War.

**INTACTNESS:** Very good. Other windows and balustrade have been installed by the present owners.

**CONDITIONS & THREATS:** Excellent.

---

<sup>1</sup> City of Newtown and Chilwell Ratebooks.