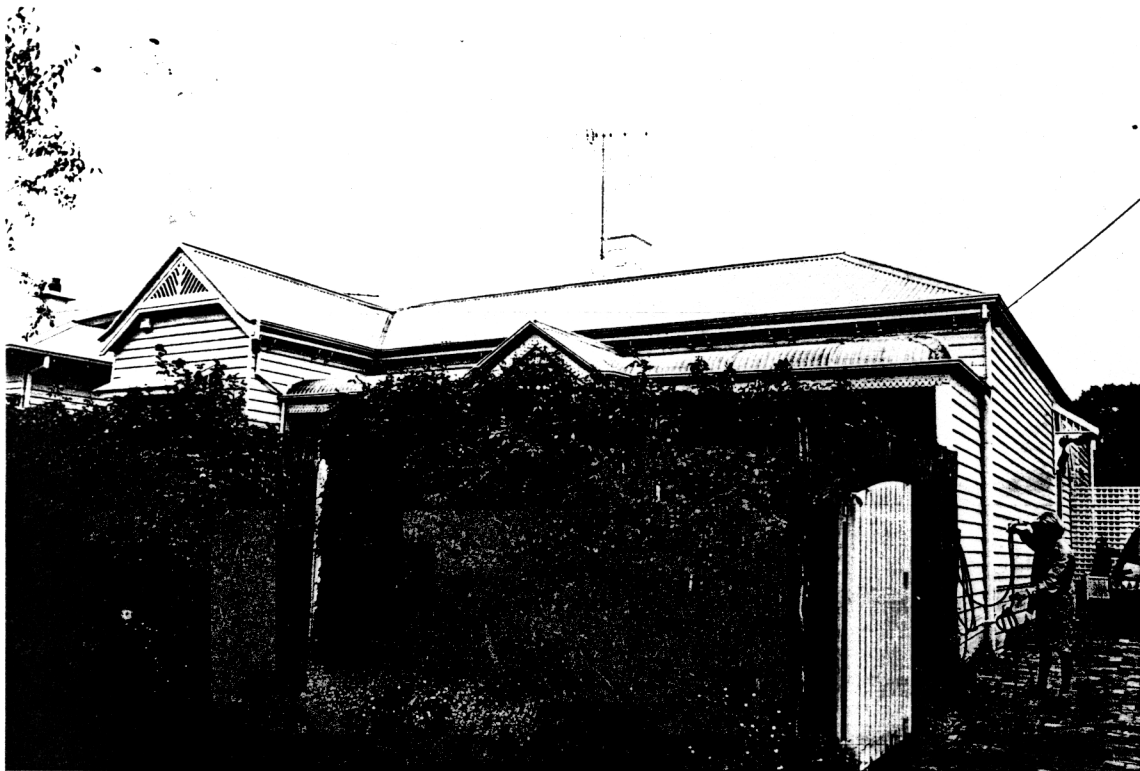


**NEWTOWN URBAN CONSERVATION STUDY. - 'C' CITATIONS. Ref: 186**

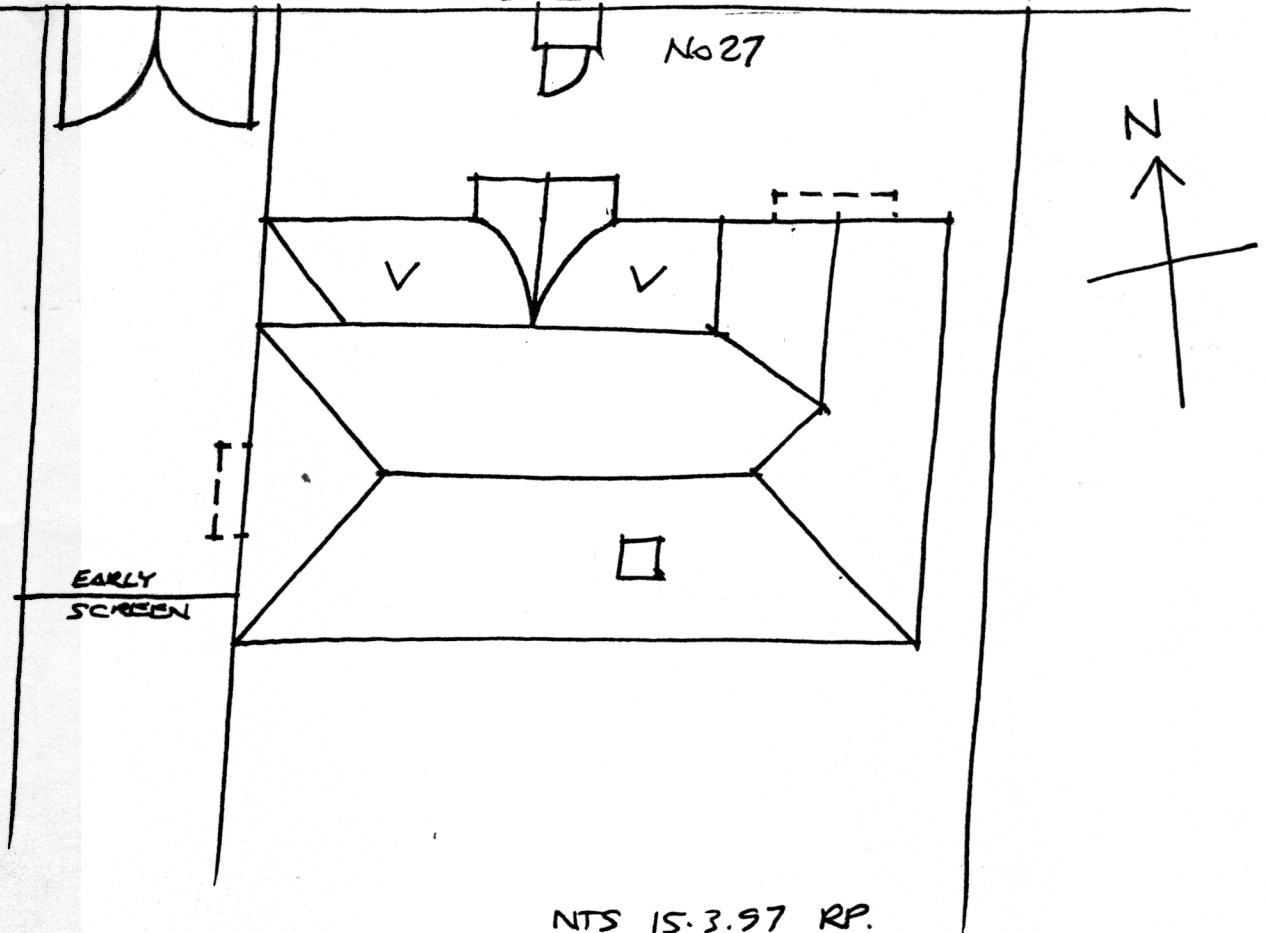
Richard Peterson Architect & Conservation Consultant. 1997.

<b>NAME:</b> Glen-Aire
<b>ADDRESS:</b> 27 Roebuck Street.
<b>USE:</b> House
<b>SIGNIFICANT DATE:</b> <b>CONSTRUCTION DATE:</b> 1876 <b>SOURCE:</b> 1
<b>DESIGNER:</b> — <b>BUILDER:</b> —
<b>CRITERIA:</b> H1;Ar1 <b>HISTORIC THEME:</b> 2.3
<b>DESCRIPTION:</b> <b>STYLE:</b> Italianate <b>STORIES:</b> 1 <b>DETACHED.</b>
<b>MATERIALS:</b> <b>WALLS:</b> Timber <b>ROOF:</b> Iron <b>STRUCTURE:</b> Stud
<b>CONDITION:</b> Excellent <b>INTACTNESS:</b> Good <b>THREATS:</b> —
<b>SIGNIFICANT INTACT ELEMENTS:</b> FORM. FACADE. VERANDAH. GABLE DECORATION. EAVES DECORATION. VERANDAH DECORATION. CHIMNEY. DOOR. WINDOWS. CONTEXT No: 28.
<b>SIGNIFICANCE:</b>
<b>TYPE:</b> HISTORICAL. ARCHITECTURAL.
<b>LEVEL:</b> LOCAL.
<b>DESIGNATION EXISTING:</b> <b>PLANNING SCHEME.</b>
<b>RECOMMENDED CONTROL:</b> <b>PLANNING SCHEME.</b>
<b>OBSCURED.</b> <b>SURVEY:</b> RP <b>DATE:</b> 15.3.1997 <b>NEGS:</b> 8.34 & 1279.33



REBUCK STREET

FENCE & GATES RECENT



NTS 15.3.97 RP.

*Richard Peterson Architect & Conservation Consultant 1997.*

**HISTORY:** As with refs 184 and 182, this was part of a large piece of land owned by Smith and Aitchinson in 1875. The following year John Murphy bought this block and had a four-room timber cottage with kitchen built on it and numbered 17<sup>H</sup>. While the rate books are missing between 1876 and 1884, the position and street number indicate the house numbered 17<sup>H</sup> and owned by William Lawry in 1884 is the same one. The Lawrys lived in this house until c1905. In 1900 it was described as having seven rooms and was called Glenaire. Around 1910 William Lawry continued to own the house but rented it to Samuel Pizer. In 1913 the number changed from 29 to 27 Elizabeth Street and Lucy Elsdon was recorded as its owner and occupier. The Elsdons owned the house until c1950 and lived there most of the time, but during the 1920s Lucy rented it to an Edward Wyatt. Around 1950 Ivy Woods bought the house but by 1961 Kathleen & Francis Beattie, housewife and detective, were the new owners and occupiers.<sup>1</sup>

**VISUAL DESCRIPTION:** A timber assymmetrical triple-fronted generally Italianate house with a hipped roof. The left bay is forward as a gable. The upper gable has an eclectic triangular angled pallsade and barges are pendant. The chimney has vermiculated panels with coved angles. Eaves have a frieze of turned spindle coved bracket pairs and panels. The bull-nosed verandah is in the angle, with a central gablet over the entry. This has a triangular cast-iron lace grille.

**SIGNIFICANCE:** A eclectic Italianate timber house built in 1876. It is architecturally significant locally as representative of this domestic style and historically significant in embodying family life in 1870s Newtown.

**INTACTNESS:** Good. The high fence and gates and the colour of the house are not appropriate. The chimney lacks its top.

**CONDITIONS & THREATS:** Excellent.

---

<sup>1</sup> City of Newtown and Chilwell Ratebooks.