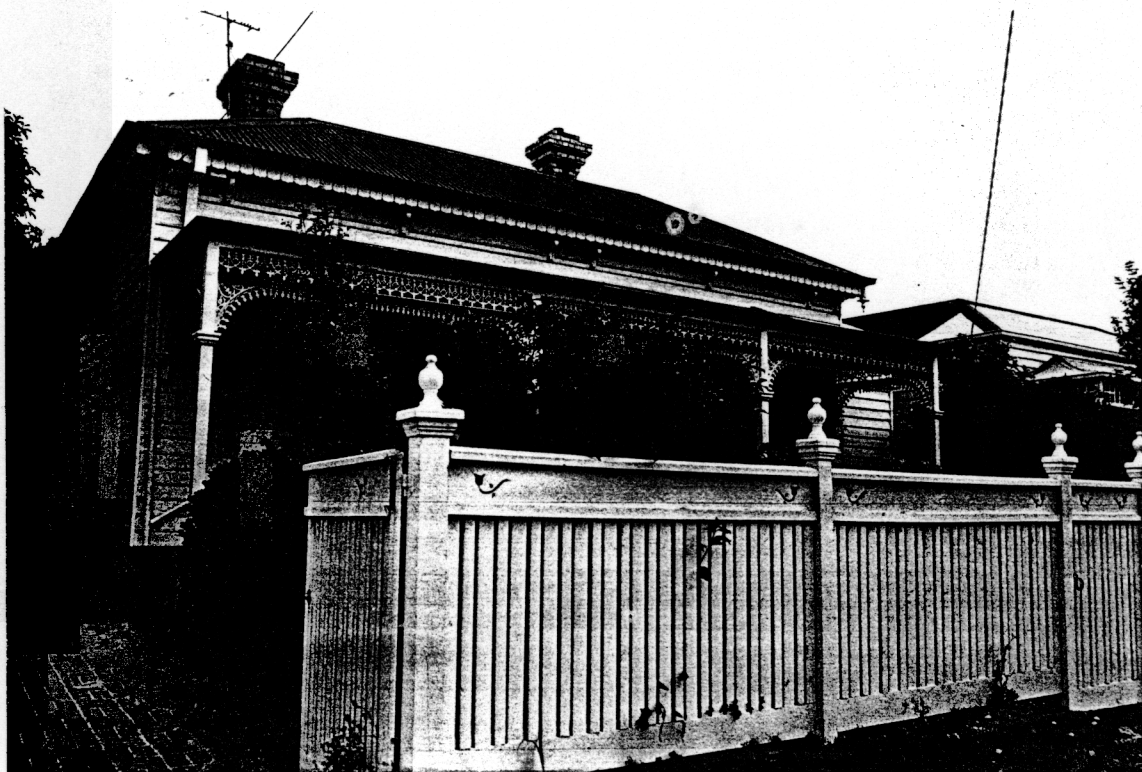


NEWTOWN URBAN CONSERVATION STUDY. - 'C' CITATIONS. Ref: 181

Richard Peterson Architect & Conservation Consultant. 1997.

NAME:	—		
FORMER NAME:	Springhill		
ADDRESS:	19 Roebuck Street		
USE:	House		
SIGNIFICANT DATE:	CONSTRUCTION DATE: 1884	SOURCE: 1	
DESIGNER:	—		
CRITERIA: H1; Ar1	HISTORIC THEME: 2.3		
DESCRIPTION:	STYLE: Italianate	STORIES: 1	DETACHED.
MATERIALS:	WALLS: Timber	ROOF: Iron	STRUCTURE: Stud
CONDITION: ?	INTACTNESS: ?	THREATS: —	
SIGNIFICANT INTACT ELEMENTS:			
MATERIALS. Bluestone. FORM. FACADE. VERANDAH. EAVES DECORATION. VERANDAH DECORATION. CHIMNEYS. DOOR. WINDOWS. CONTEXT Nos: 11, 15 & 21.			
SIGNIFICANCE:			
TYPE:	HISTORICAL. ARCHITECTURAL.		
LEVEL:	LOCAL.		
DESIGNATION EXISTING:	PLANNING SCHEME.		
RECOMMENDED CONTROL:	PLANNING SCHEME.		
SURVEY: RP	DATE: 17.3.1997	NEGS: 8.29 & 1279.28	



HISTORY: This timber house was built in 1884 with six rooms. It was owned and occupied by William Cameron who continued to live there for about ten years when he sold to Jane Crow. She named the house Springhill and continued to live there until c1915 when she sold to Thomas Dawson, a gardener. In 1905 the house was described as having seven rooms and in 1913 it changed its street number from 21 to 19 Elizabeth Street. Dawson lived in the house until the late 1930 by which time the first land measurements were provided at 48'6" x 110'. He then rented the house to George Watson, a detective, then Alfred Hurring, a retiree, before selling to Thomas Rainford, contractor, in the late 1950s.¹

VISUAL DESCRIPTION: A double-fronted symmetrical timber Italianate house with a hipped roof. The hipped verandah has a cast-iron lace frieze over a rail with lace valance and brackets below, on Doric timber posts. The chimneys are bichromatic brick with brick moulds. Eaves have a shield-shaped incised fretwork valance with a frieze of panels on ogee brackets. The front door is four-panelled with side and fan lights. It is all on a roughly curved, ashlar bluestone base.

COMPARATIVE ANALYSIS: Nos 11,(180), 15 & 21(182) are very similar.

SIGNIFICANCE: A relatively plain characteristic symmetrical Italianate timber house built in 1875. It has an interesting eaves valance. It is architecturally significant locally as characteristic domestic Italianate and historically as embodying family life in Newtown in the 1870s.

INTACTNESS: The verandah may have been rebuilt including its base. It can now only be entered from the side. The fence is later and anachronistic. There is a small, generally appropriate skillion addition at right.

CONDITIONS & THREATS: Very good.

¹ City of Newtown and Chilwell Ratebooks.