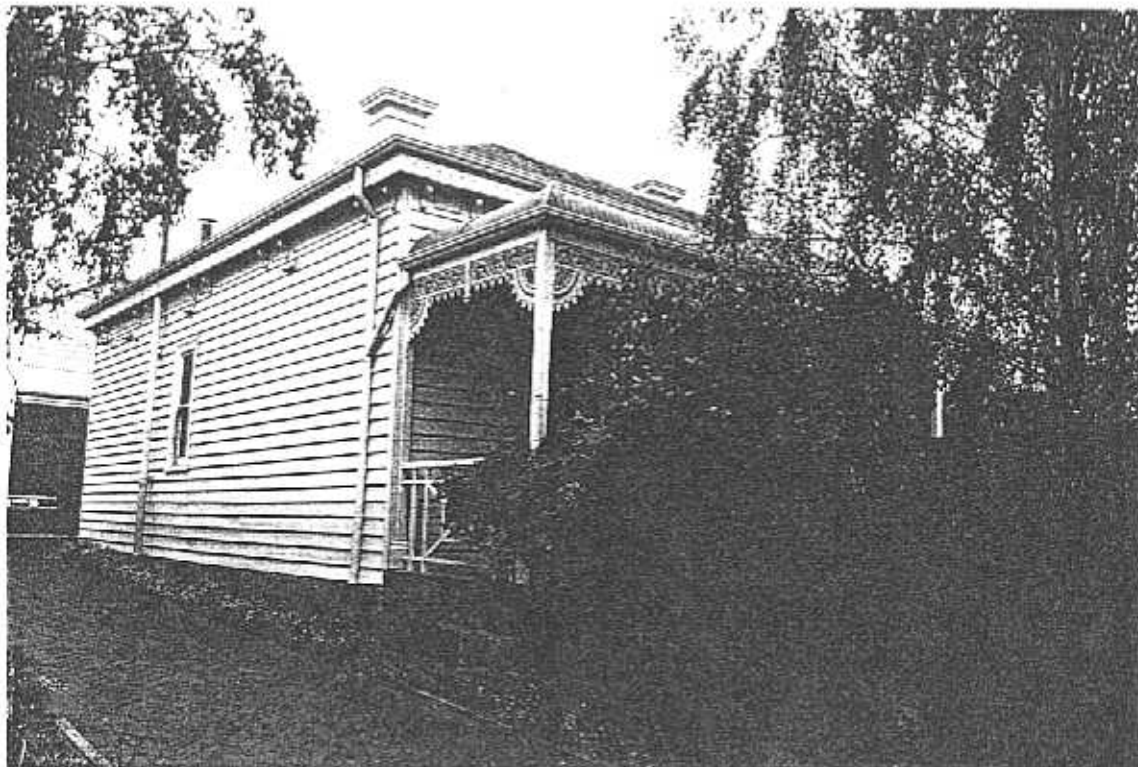
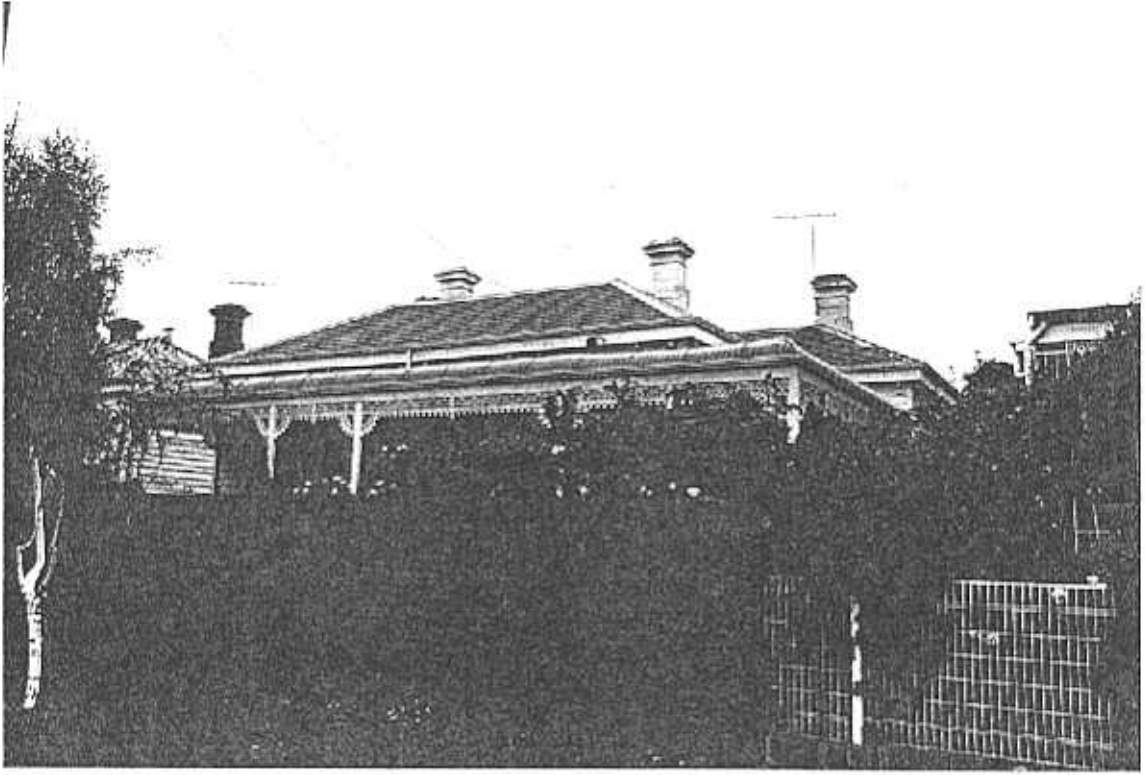


**NEWTOWN URBAN CONSERVATION STUDY. - 'C' CITATIONS. Ref: 180**  
 Richard Peterson Architect & Conservation Consultant. 1997.

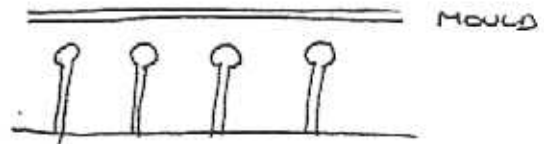
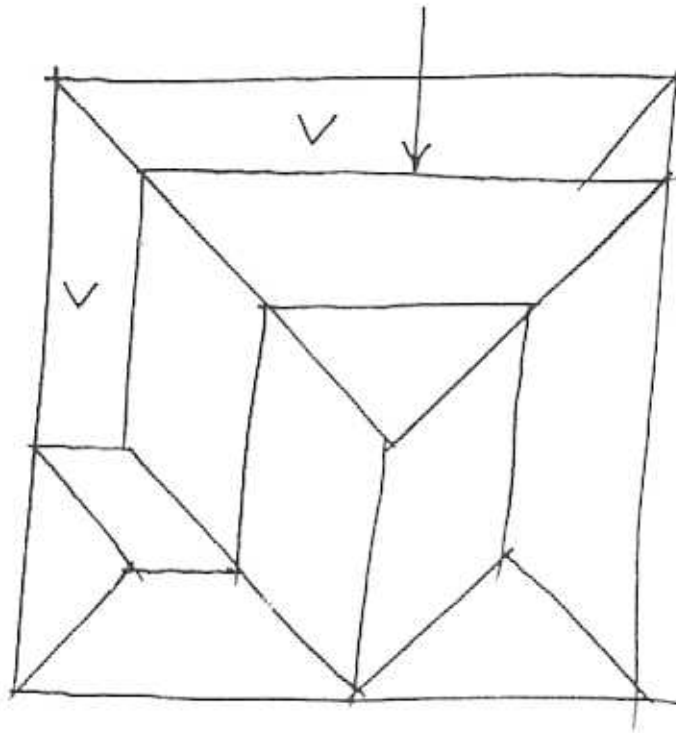
<b>NAME:</b> —			
<b>FORMER NAME:</b> Sterline			
<b>ADDRESS:</b> 11 Roebuck Street.			
<b>USE:</b> House			
<b>SIGNIFICANT DATE:</b>		<b>CONSTRUCTION DATE:</b> 1875	<b>SOURCE:</b> 1
<b>DESIGNER:</b> —		<b>BUILDER:</b> —	
<b>CRITERIA:</b> H1; Ar1		<b>HISTORIC THEME:</b> 2.3	
<b>DESCRIPTION:</b>	<b>STYLE:</b> Italianate	<b>STORIES:</b> 1	<b>DETACHED.</b>
<b>MATERIALS:</b>	<b>WALLS:</b> Timber	<b>ROOF:</b> Slate	<b>STRUCTURE:</b> Stud
<b>CONDITION:</b> Very good	<b>INTACTNESS:</b> Very good	<b>THREATS:</b> —	
<b>SIGNIFICANT INTACT ELEMENTS:</b>			
MATERIALS. Slates. FORM. FACADE. VERANDA. EAVES DECORATION. VERANDA DECORATION. CHIMNEYS. DOOR. Knocker. WINDOWS. PAINTWORK SCHEME.			
<b>CONTEXT:</b> 15,19,21			
<b>SIGNIFICANCE:</b>			
<b>TYPE:</b>	HISTORICAL. ARCHITECTURAL.		
<b>LEVEL:</b>	LOCAL.		
<b>DESIGNATION EXISTING:</b>		PLANNING SCHEME.	
<b>RECOMMENDED CONTROL:</b>		PLANNING SCHEME.	
<b>OBSCURED.</b>	<b>SURVEY:</b> RP	<b>DATE:</b> 17.3.1997	<b>NEGS:</b> 8.27, 28; & 1279.26 & 27





ROEBUCK STREET

No 11



EAVES VALENCE DETAIL

NTS 17.3.97 RP.

**HISTORY:** In 1875 Robert Shirra, warehouseman, bought 50' x 110' of land from Smith & Aitchison and had a seven room timber house built on it. He lived there for many years. The 1910 rate book shows Anna Shirra (his wife?) as owner and occupier. She named the house Sterline, and this year also its street number changed from 15 to 11. In the early 1920s she sold the house (which had changed its number again to 13 Elizabeth Street) to Mary Smith who owned it for the next twenty-five years or so. Alexander Smith, an agent and possibly her husband or another family member, became its owner c1950. In 1959 the house was recorded as no. 11A Elizabeth Street but in 1961 it was back to number 11 again.<sup>1</sup>

**VISUAL DESCRIPTION:** A double-fronted timber Italianate house, with a slate hipped roof. It is symmetrical at front, with a bull-nosed verandah across, returning at right to a projecting wing. It has a cast-iron lace valance and brackets. Timber posts have vertical grooves decoration and chamfers.

Chimneys have deep Classical moulds, rendered. Eaves have a valance with a pierced keyhole motif. The entrance door is four-panelled with fan and sidelights and a surviving brass knocker.

**COMPARATIVE ANALYSIS.** Nos 15, 19(181) & 21(182) are very similar.

**SIGNIFICANCE:** A relatively plain characteristic symmetrical Italianate timber house built in 1875. It has an interesting eaves valance. It is architecturally significant locally as characteristic domestic Italianate and historically as embodying family life in Newtown in the 1870s.

**INTACTNESS:** Very good. The high fence is not appropriate.

**CONDITIONS & THREATS:** Very good. The roof slates may need some attention.

---

<sup>1</sup> City of Newtown and Chilwell Ratebooks.