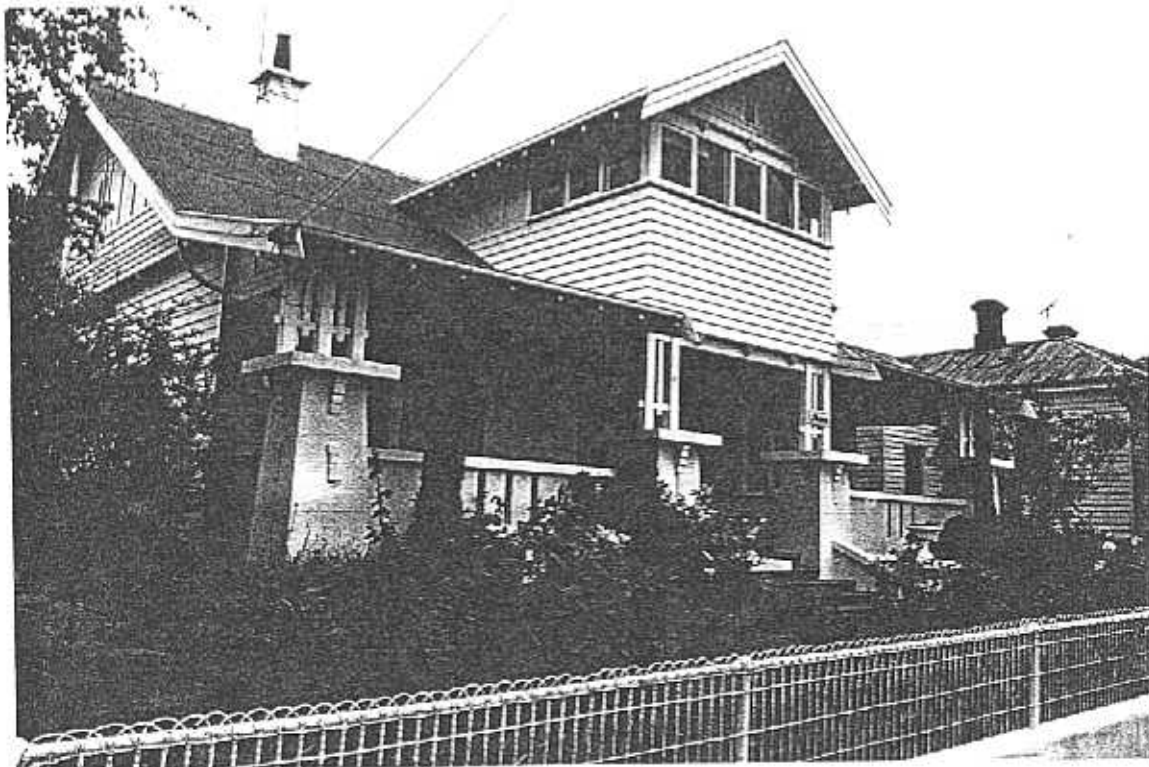


NEWTOWN URBAN CONSERVATION STUDY. - 'C' CITATIONS. Ref: 179

Richard Peterson Architect & Conservation Consultant. 1997.

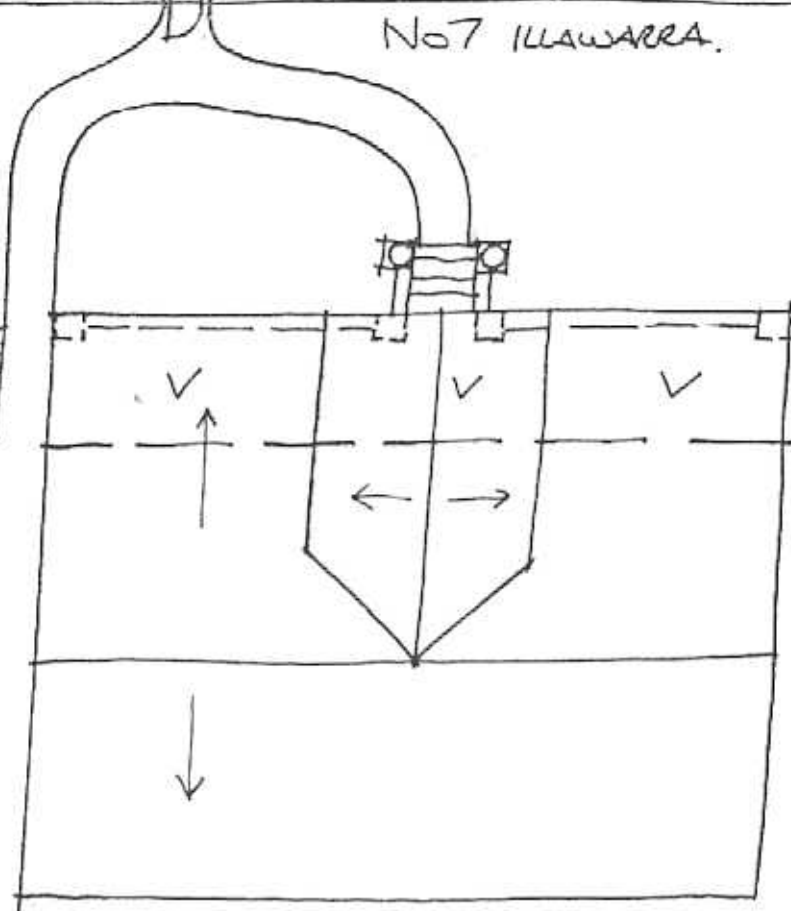
NAME: Illawarra	
ADDRESS: 7 Roebuck Street	
USE: House	
SIGNIFICANT DATE:	CONSTRUCTION DATE: 1922 SOURCE: 1
DESIGNER: —	BUILDER: —
CRITERIA: H1; Ar1	HISTORIC THEME: 2.3
DESCRIPTION: STYLE: Bungalow	STORIES: 2 DETACHED.
MATERIALS: WALLS Timber	ROOF Iron STRUCTURE Stud
CONDITION: Very good	INTACTNESS: Very good THREATS: —
SIGNIFICANT INTACT ELEMENTS: FORM. FACADE. VERANDAH. ROOF FORM. GABLE DECORATION. VERANDAH DECORATION, stair and ballustrade. CHIMNEYS. DOORS. WINDOWS. NAMEPLATE. GARDEN STRUCTURE. Urns. Path. Edge tiles. FENCE.	
SIGNIFICANCE:	
TYPE:	HISTORICAL. ARCHITECTURAL.
LEVEL:	LOCAL.
DESIGNATION EXISTING:	PLANNING SCHEME.
RECOMMENDED CONTROL:	PLANNING SCHEME.
SURVEY: RP	DATE: 17.3.1997 NEGS: 8.26 & 1279.25



ROEBUCK STREET

No 7 ILLAWARRA.

EDGE
TILES
↳



NTS 17.3.97 RP.

Richard Peterson Architect & Conservation Consultant 1997.

HISTORY: The timber house on land measuring 60' x 110' was built in 1922 and owned by Alexander Smith, a traveller. He lived there until c1930, when he sold to Agnes George. George was still the owner and occupier in 1961. No significant changes seem to have been made up to this time.¹

VISUAL DESCRIPTION: A symmetrical Californian Bungalow with an attic. The roof is a large gable across, extending forward break-pitch over a deep verandah across the front. At centre is a gable over the attic. The upper gable slightly jetties, on nests of unusual small triple-bullnosed brackets, with others at eaves level. It is clad with mock shingles.

Rafters are exposed. The balustrade is rendered, with triple slot decoration and broad capping between pylons. These have large plate tops, supported on stopped corbels. Over are post-pairs with inverted Latin cruciform timbers and a signwritten nameplate. Windows are triples with Art Nouveau leadlighting of bluebells, an arched bar at centre.

The entrance and attic gable are on the central axis, with steps between urns on pillars. The double doors are leadlight glazed. Contextual elements surviving include the serpentine path which is concrete with bullnosed edging and some rare glazed terracotta edging tiles. The fence is crimp-woven mesh on tubular steel, over a concrete plinth with a mild steel gate.

SIGNIFICANCE: A strongly designed, almost Modernist, timber Californian Bungalow with an attic, built in 1922. It is architecturally significant as characteristic of this domestic style and for its design elements, as described, including the context. It is historically significant as a representative embodiment of family life in Newtown in the 1920s.

INTACTNESS: Very good. The attic gable was probably open as a balcony, now enclosed. The edging tiles should be relocated to the front garden.

CONDITIONS & THREATS: Very good.

¹ City of Newtown and Chilwell Ratebooks.