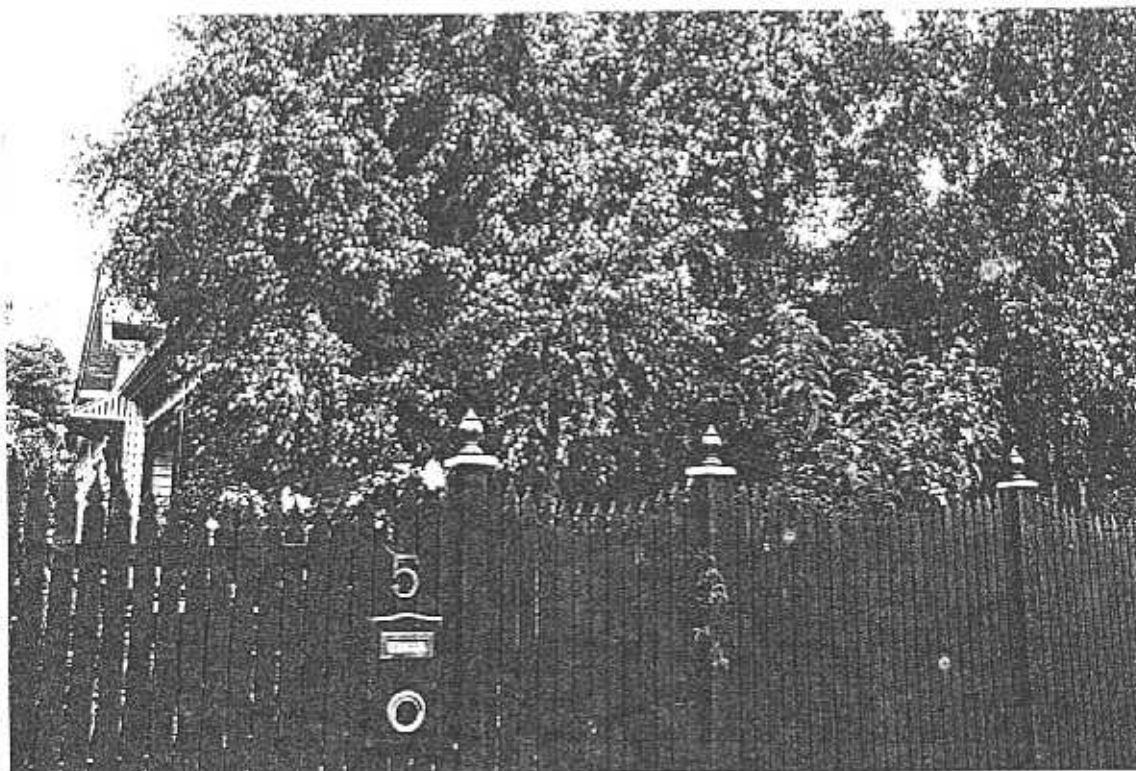
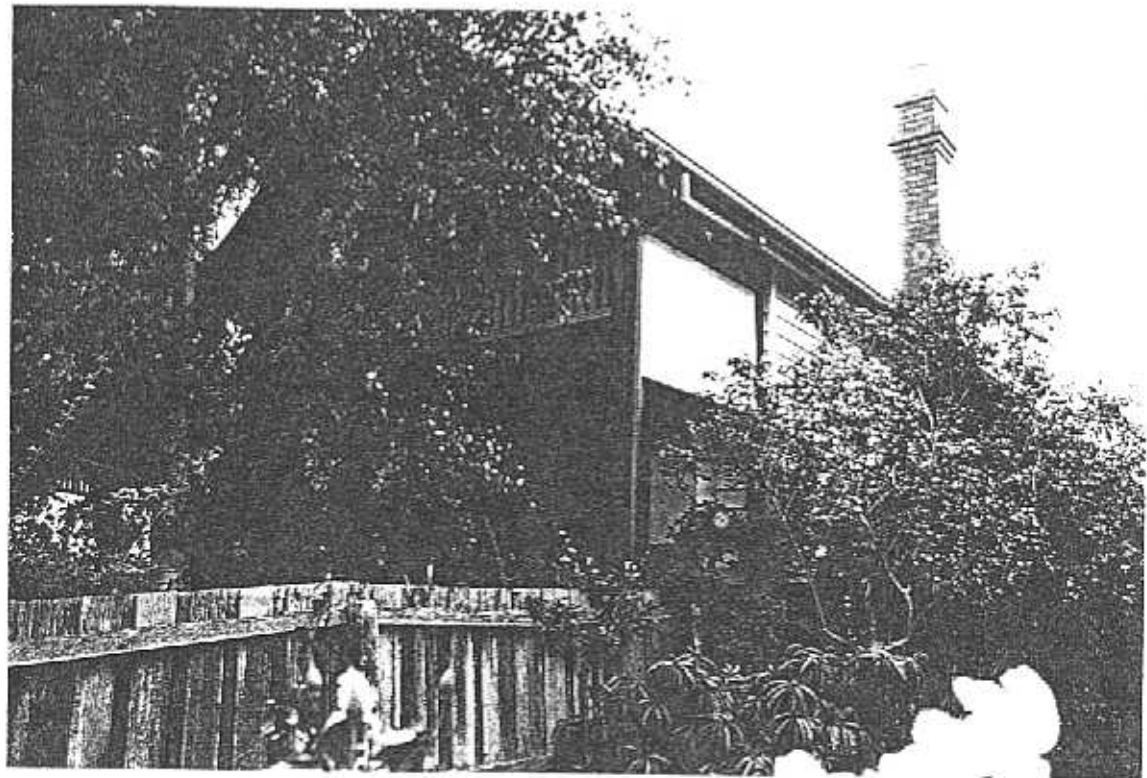


**NEWTOWN URBAN CONSERVATION STUDY. - 'C' CITATIONS. Ref: 178**

Richard Peterson Architect & Conservation Consultant. 1997.

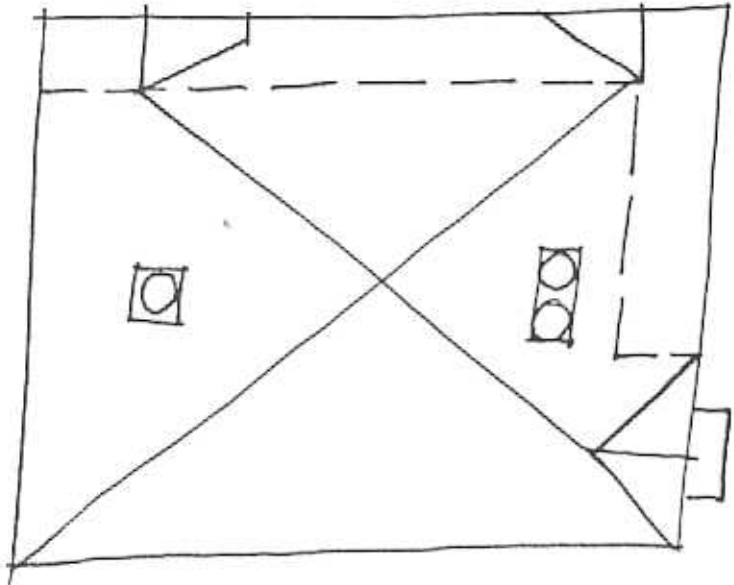
<b>NAME:</b> Maldon House.
<b>ADDRESS:</b> 5 Roebuck Street.
<b>USE:</b> House
<b>SIGNIFICANT DATE:</b> <b>CONSTRUCTION DATE:</b> 1909 <b>SOURCE:</b> 1
<b>DESIGNER:</b> — <b>BUILDER:</b> —
<b>CRITERIA:</b> III; Ar 1 <b>HISTORIC THEME:</b> 2.3
<b>DESCRIPTION:</b> <b>STYLE:</b> Edwardian <b>STORIES:</b> 1 <b>DETACHED.</b>
<b>MATERIALS:</b> <b>WALLS</b> Timber <b>ROOF</b> Iron <b>STRUCTURE</b> Stud
<b>CONDITION:</b> Excellent <b>INTACTNESS:</b> Excellent <b>THREATS:</b> —
<b>SIGNIFICANT INTACT ELEMENTS:</b> FORM. FACADE. VERANDAH. ROOF FORM. GABLE DECORATION. VERANDAH DECORATION. CHIMNEYS. Pots. DOOR. WINDOWS.
<b>SIGNIFICANCE:</b>
<b>TYPE:</b> HISTORICAL. ARCHITECTURAL.
<b>LEVEL:</b> LOCAL.
<b>DESIGNATION EXISTING:</b> PLANNING SCHEME.
<b>RECOMMENDED CONTROL:</b> PLANNING SCHEME.
<b>OBSCURED.</b> <b>SURVEY:</b> RP <b>DATE:</b> 17.3.1997 <b>NEGS:</b> 8,23,24,25 & 1279.24



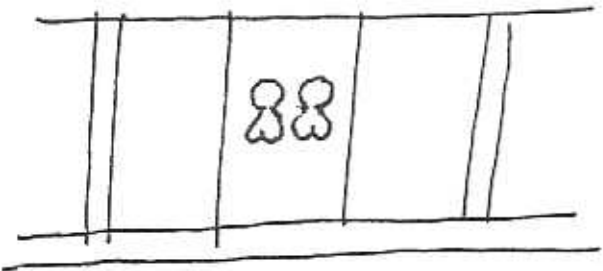


ROEBUCK STREET

No 5



NTS 17.3.97 RP.



VALANCE DETAIL.

**HISTORY:** In 1909 James Gleeson, constable, built a five-roomed timber house on his land measuring 42' x 110'. He sold the house to Percy James, bandmaster, whose wife still owned and occupied the house in 1961. From the 1920s the land was measured as 44' x 110'.<sup>1</sup>

**VISUAL DESCRIPTION:** A triple-fronted, timber, hip-roofed Edwardian house. The right front left side rear bays are set forward as gables: at left with a skillion windowhood with palisade and fretwork brackets. The upper gables jetty on fretwork brackets, and are clad with ripple-iron.

The verandah is across the front and around the angle, under the hip. Its valance is palisade with unusual keyhole pattern pierced fretwork panels. Under the right gable, the valance is deeper and wavy. The entrance door, side and fanlights are glazed with leadlight.

**SIGNIFICANCE:** A characteristic and particularly intact timber triple-fronted Edwardian house built in 1909. It is one of a group architecturally significant locally as representative of this domestic style and historically significant as embodying Edwardian family life in Newtown. It is of interest for its unusual verandah valance decoration.

**INTACTNESS:** Excellent. The balustrade and nameplate appear to have been added. The high fence is not appropriate.

**CONDITIONS & THREATS:** Excellent.

---

<sup>1</sup> City of Newtown and Chilwell Ratebooks.