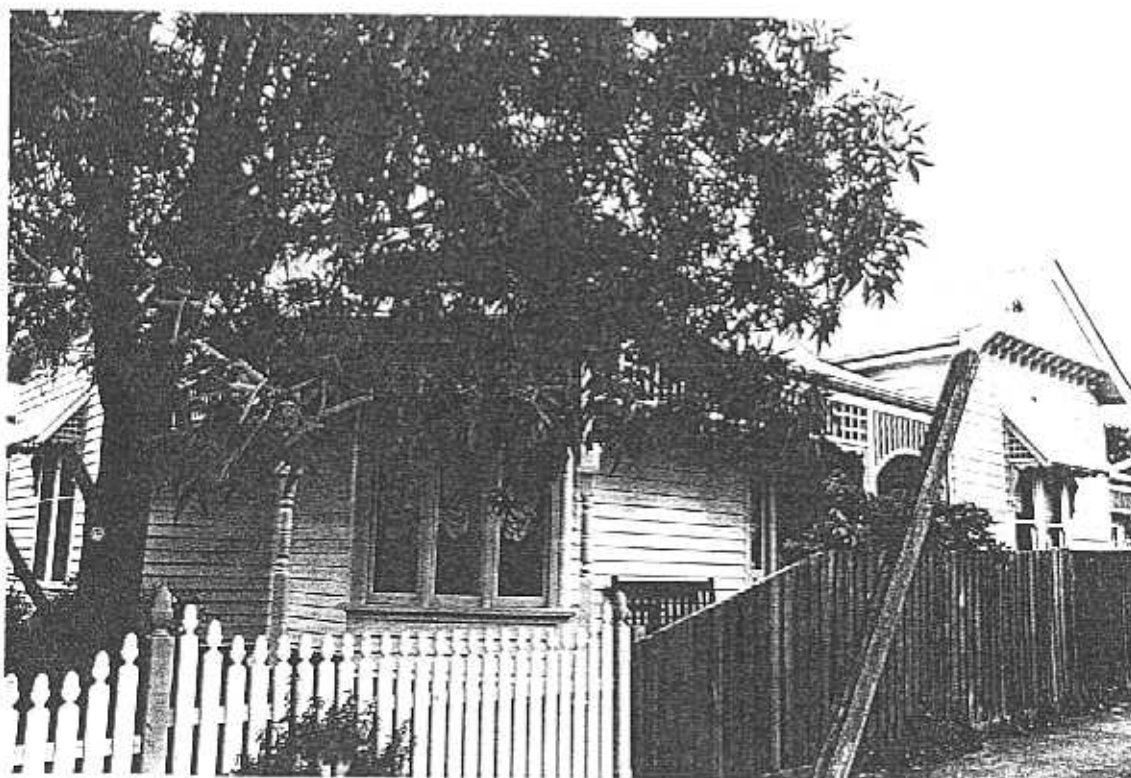


**NEWTOWN URBAN CONSERVATION STUDY. - 'C' CITATIONS. Ref: 175**

Richard Peterson Architect & Conservation Consultant. 1997.

<b>NAME:</b> —	
<b>ADDRESS:</b> 55 Retreat Road (SE cnr of Talbot Street).	
<b>USE:</b> House	
<b>SIGNIFICANT DATE:</b>	<b>CONSTRUCTION DATE:</b> 1907 <b>SOURCE:</b> 1
<b>ALTERATIONS/ADDITIONS:</b>	<b>DATE:</b> 1990s <b>SOURCE:</b> Visual
<b>DESIGNER:</b> —	<b>BUILDER:</b> —
<b>CRITERIA:</b> III; Ar1	<b>HISTORIC THEME:</b> 2.3
<b>DESCRIPTION:</b> <b>STYLE:</b> Edwardian <b>STORIES:</b> 1 <b>DETACHED.</b>	
<b>MATERIALS:</b> <b>WALLS</b> Timber <b>ROOF</b> Zincalume <b>STRUCTURE</b> Stud	
<b>CONDITION:</b> Excellent <b>INTACTNESS:</b> Excellent <b>THREATS:</b> —	
<b>SIGNIFICANT INTACT ELEMENTS:</b> FORM. FACADE. VERANDAH. ROOF FORM. GABLE DECORATION. VERANDAH DECORATION. CHIMNEYS. DOORS. INTERIORS. CONTEXT: 35,37,43,45,47,49,51,53	
<b>SIGNIFICANCE:</b>	
<b>TYPE:</b>	HISTORICAL. ARCHITECTURAL.
<b>LEVEL:</b>	LOCAL.
<b>DESIGNATION EXISTING:</b>	PLANNING SCHEME.
<b>RECOMMENDED CONTROL:</b>	PLANNING SCHEME.
<b>OBSCURED.</b>	<b>SURVEY:</b> RP <b>DATE:</b> 9.2.1997 <b>NEGS:</b> 8.18; 1275.25 & 26

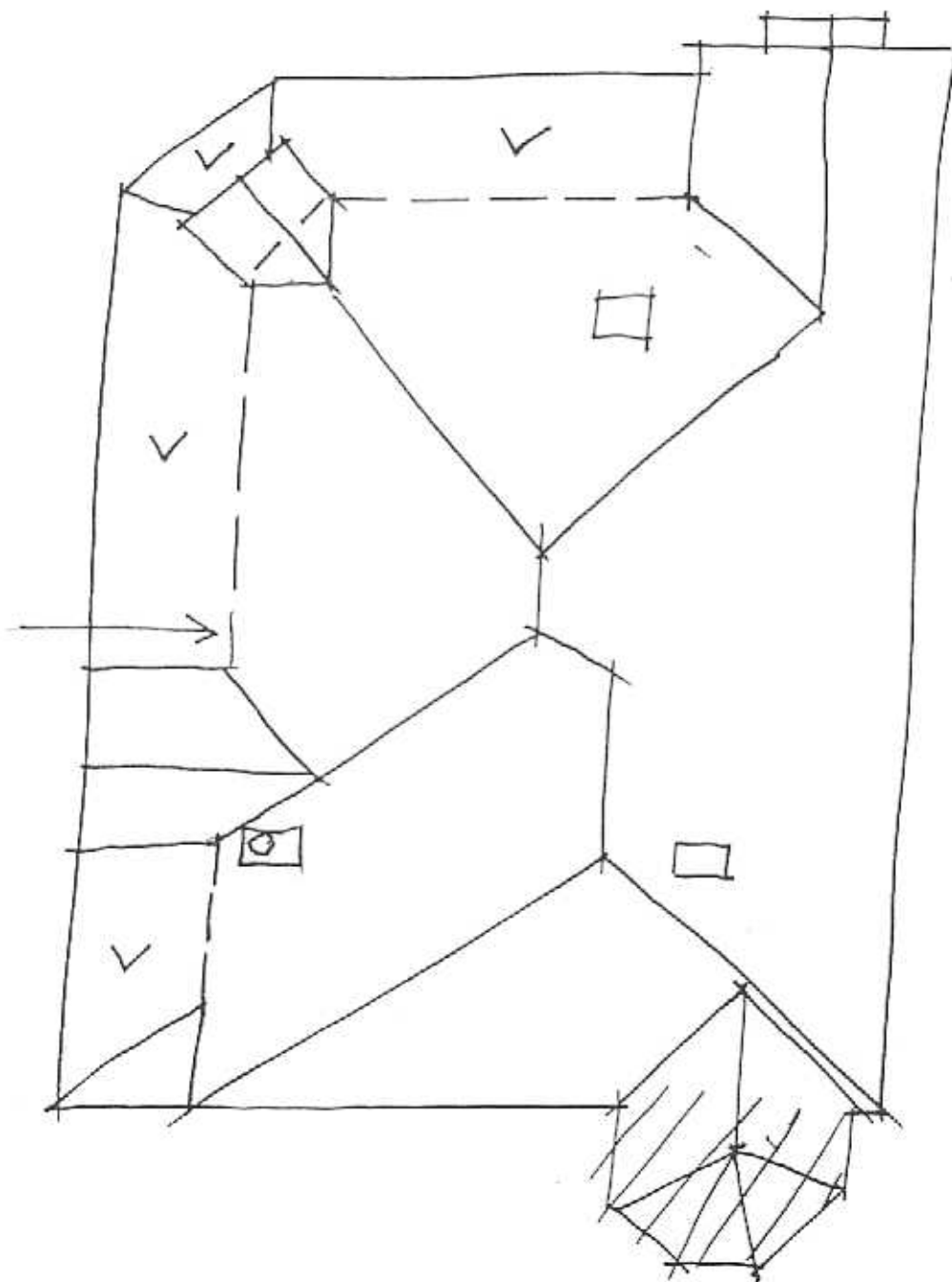


RETREAT ROAD

175

No 55

TALBOT STREET



NTS 9.2.97 RP

////// NEW WORK  
---

**HISTORY:** In 1907 Reuban and George White, farmers, owned the land measuring 40' x 122' and built a timber cottage with five rooms. The house was sold a couple of times in succession and, in 1910, Susan Coates became its new owner. She rented it out but, in c1918, she moved in and remained for ten years or so. In the 1930s first Frank Copplestone, newsagent, then Bertram Logan, builder, lived in the house.<sup>1</sup>

**VISUAL DESCRIPTION:** A triple-fronted, hip-roofed, timber Edwardian house, with gables projecting at left and centre right side. Upper gables jetty on ogee brackets, clad with pressed metal in roughcast pattern. Their window pairs have skillion hoods supported on lattice, with decorative fretwork brackets.

The verandah extends around the angle, with a splayed corner. In the splay is a deep bay window, extending upwards to penetrate the roof as a splayed gablet. Verandah posts are turned, with palisade and lattice valance over a rail, with decorative fretwork brackets. On the splay is a catenary curve, with a wavy palisade. Chimneys are plain, with corbelled tops.

**SIGNIFICANCE:** A characteristic triple-fronted timber Edwardian house built in 1907 which is particularly intact. It is architecturally significant locally as representative of this domestic style and historically as embodying middle class life in Newtown in the Edwardian period.

**INTACTNESS:** Excellent. The fence, flyscreen door and the glazed roofed gazebo at the rear are recent. The work is in replica and hard to distinguish from the old building, so there may be much more that is new.

**CONDITIONS & THREATS:** Excellent.

---

<sup>1</sup> City of Newtown and Chilwell Ratebooks.