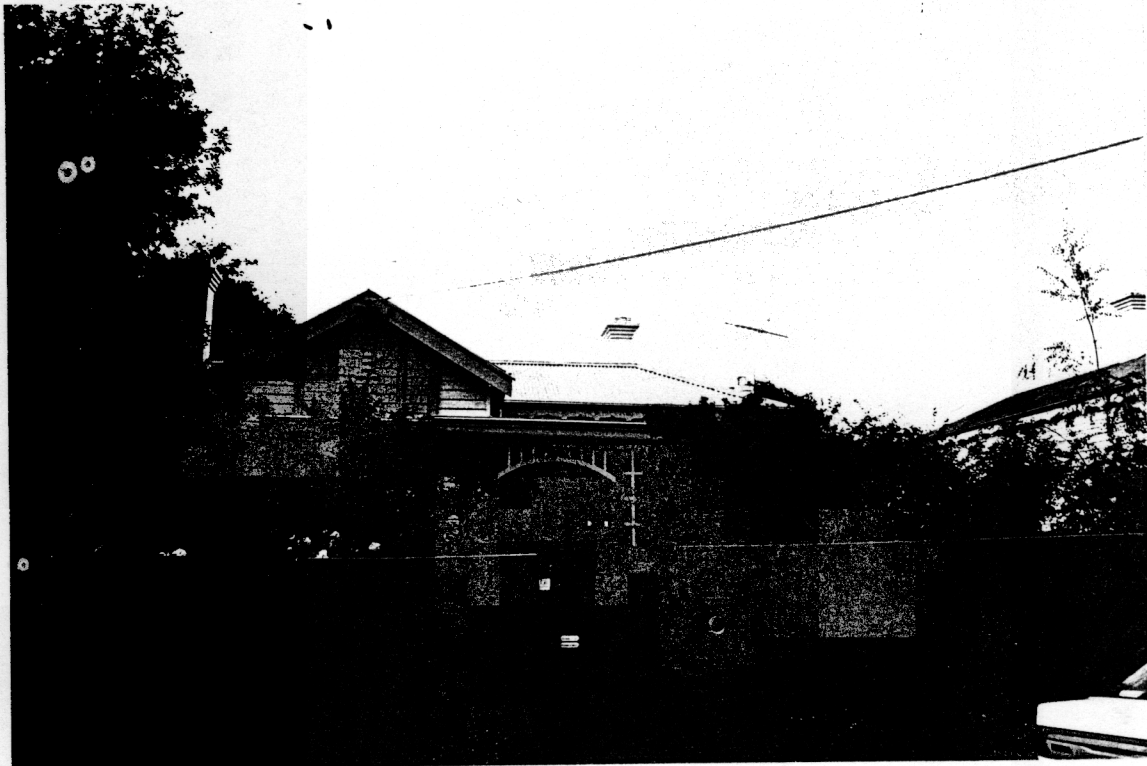
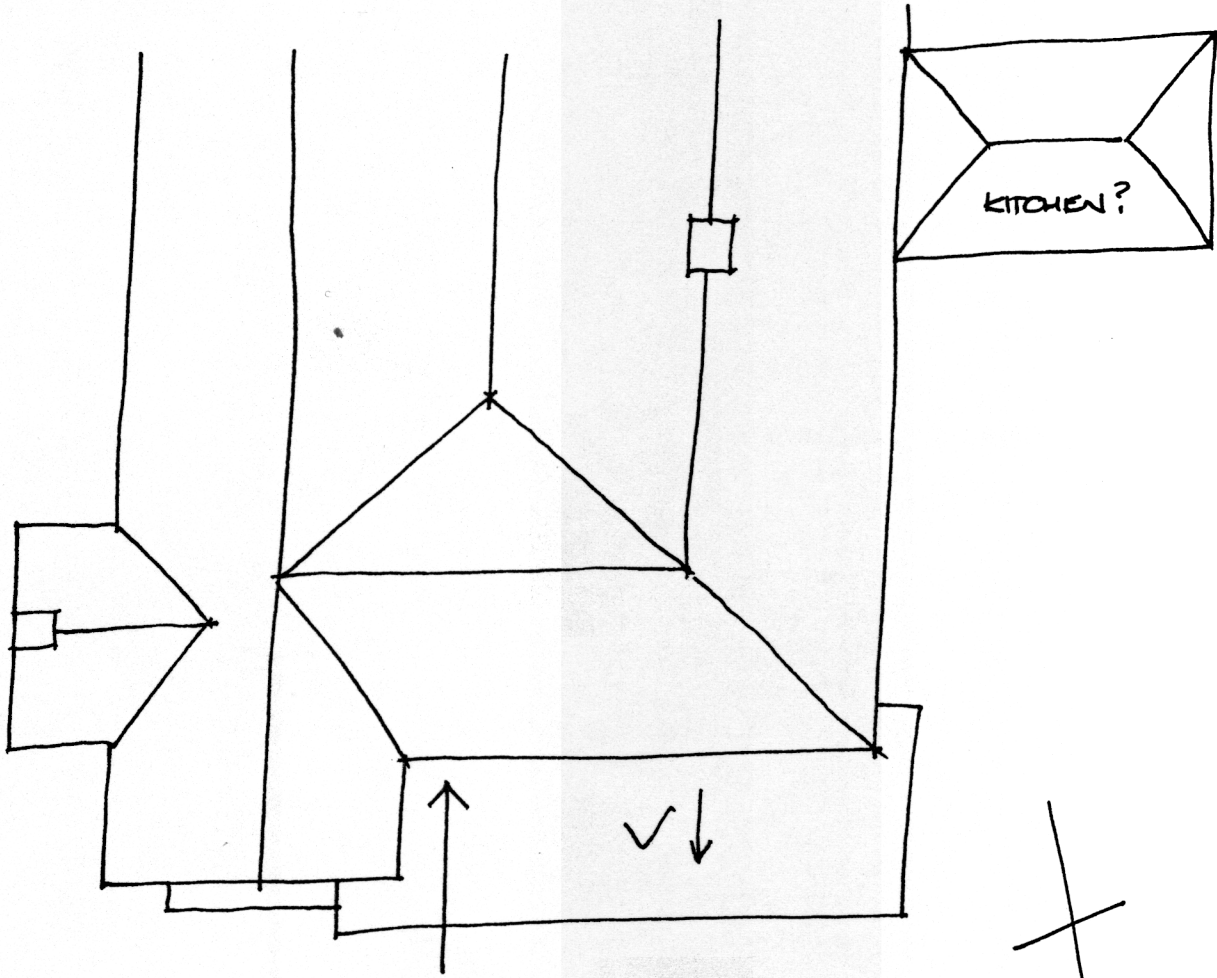


**NEWTOWN URBAN CONSERVATION STUDY. - 'C' CITATIONS. Ref: 151**  
 Richard Peterson Architect & Conservation Consultant. 1997.

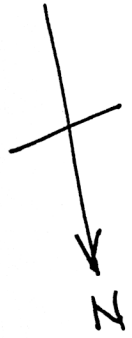
<b>NAME:</b> Arrandoon	
<b>ADDRESS:</b> 112 Prospect Road	
<b>USE:</b> House	
<b>SIGNIFICANT DATE:</b>	<b>CONSTRUCTION DATE:</b> 1885 <b>SOURCE:</b> 1
<b>ALTERATIONS &amp; ADDITIONS:</b>	<b>DATE:</b> c1920 <b>SOURCE:</b> Visual
<b>DESIGNER:</b> —	<b>BUILDER:</b> Purnell & Sons
<b>CRITERIA:</b> Ar1; H1.	<b>HISTORIC THEME:</b> 2.3
<b>DESCRIPTION:</b> <b>STYLE:</b> Edwardian <b>STORIES:</b> 1 <b>DETACHED.</b>	
<b>MATERIALS:</b> <b>WALLS</b> Timber <b>ROOF</b> Iron <b>STRUCTURE</b> Stud.	
<b>CONDITION:</b> Excellent <b>INTACTNESS:</b> Very good <b>THREATS:</b> —	
<b>SIGNIFICANT INTACT ELEMENTS:</b> FORM. FACADE. VERANDAH. ROOF FORM. GABLE DECORATION. EAVES DECORATION. VERANDAH DECORATION. CHIMNEYS. DOOR. WINDOWS. CONTEXT Nos: 110, 114 & 116.	
<b>SIGNIFICANCE:</b>	
<b>TYPE:</b>	HISTORICAL. ARCHITECTURAL.
<b>LEVEL:</b>	LOCAL
<b>DESIGNATION EXISTING:</b>	PLANNING SCHEME.
<b>RECOMMENDED CONTROL:</b>	PLANNING SCHEME.
<b>OBSCURED.</b>	<b>SURVEY:</b> RP <b>DATE:</b> 8.2.1997 <b>NEGS:</b> 7.20 & 1274.29



151



No 112



PROSPECT ROAD

RP. 8.2.97 MFS

*Richard Peterson Architect & Conservation Consultant 1997.*

**HISTORY:** Owned and subsequently subdivided by Purnell and Sons with 110, 114 and 116 Prospect Road. This cottage was constructed in 1885 for the farmer Charles Arthur Crisp. In 1890 Crisp was still described as the owner and occupier of the cottage, although then as a stock and station agent. In 1900 the occupant was William Benjamin Crisp, yet the cottage was still owned by Charles Arthur Crisp. In 1910 Charles with two others, was again the occupant but by 1920 Maud Cook Crisp occupied what was then called Arrandoon and alterations were made to the front and verandah to make the appearance more fashionable. By 1920 L Roberts had purchased 112 Prospect Road and it was occupied by Alma McHenry, although by 1940 it had again been sold to Michael Hede a 'manufacturer' who also occupied the cottage with two others.<sup>1</sup>

**VISUAL DESCRIPTION:** A double-fronted timber Late Victorian house with early Bungalow alterations. It has a hipped roof, the left bay is set forward as a gable, its upper central panel with timber shingle decorative cladding and a louvred vent between bands. Beneath is a tripartite window with an extension of the verandah as a short hood, supported on long triangular brackets. Upper sashes are leadlight in geometric pattern.

Chimneys are Venetian, eaves have turned spindle brackets behind a fretwork valance between square Doric post pairs, with broad lattice between. The four-panelled door has side and fanlights.

**COMPARATIVE ANALYSIS:** Nos 110 and 114 are by the same builders, the valance is similar in each.

**SIGNIFICANCE:** A late Victorian timber house one of a group built in 1885 by Purnell & Sons and altered in about 1920. It is architecturally significant locally as one of a characteristic group of this style and historically in embodying late nineteenth century life in Newtown.

**INTACTNESS:** Very good but the high fence and gates are not appropriate and the chimneys have been painted.

**CONDITIONS & THREATS:** Excellent.

---

<sup>1</sup> City of Newtown and Chilwell Rate Books