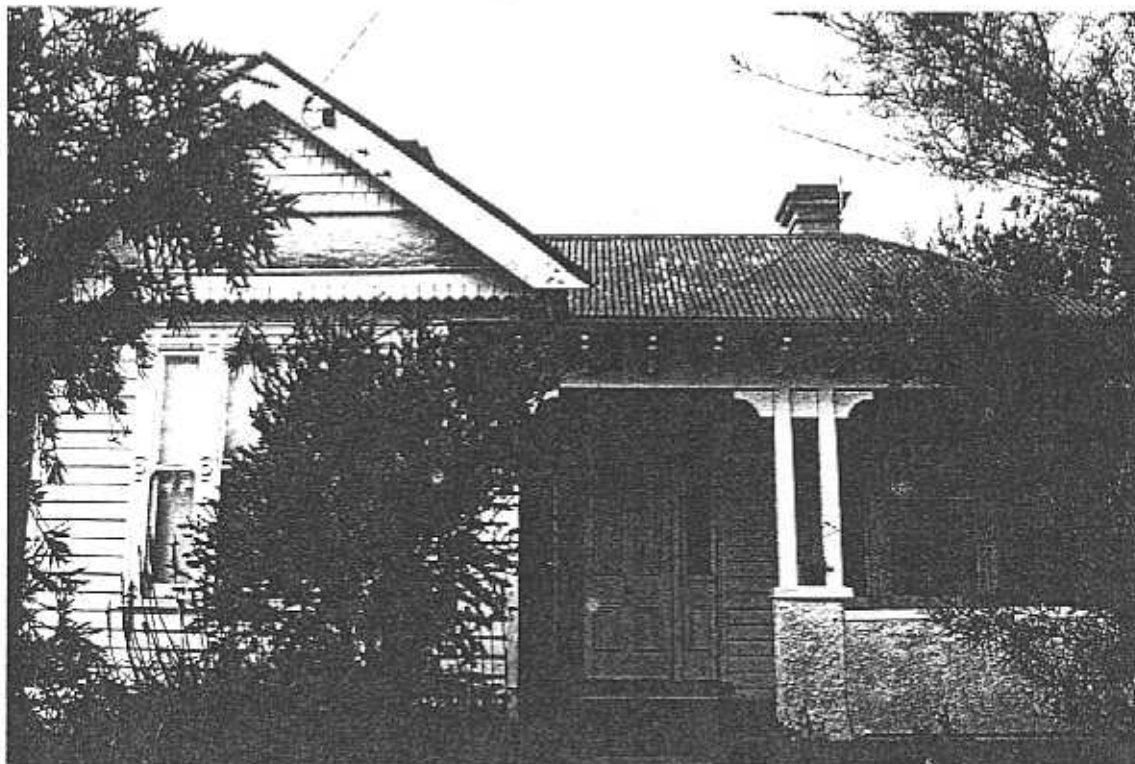


**NEWTOWN URBAN CONSERVATION STUDY. - 'C' CITATIONS. Ref: 155**

Richard Peterson Architect & Conservation Consultant. 1997.

<b>NAME:</b> —	
<b>ADDRESS:</b> 116 Prospect Road	
<b>USE:</b> House	<b>CONSTRUCTION DATE:</b> 1885 <b>SOURCE:</b> 1
<b>SIGNIFICANT DATE:</b>	<b>SOURCE:</b> visual
<b>ALTERATIONS &amp; ADDITIONS:</b> 1920s	
<b>DESIGNER:</b> —	<b>BUILDER:</b> Purnell & Sons.
<b>CRITERIA:</b> H1; Ar1.	<b>HISTORIC THEME:</b> 2.3
<b>DESCRIPTION:</b> <b>STYLE:</b> Late Victorian	<b>STORIES:</b> 1 <b>DETACHED.</b>
<b>MATERIALS:</b> <b>WALLS</b> Timber	<b>ROOF</b> Iron <b>STRUCTURE</b> Stud
<b>CONDITION:</b> Fair	<b>INTACTNESS:</b> Very good <b>THREATS:</b> —
<b>SIGNIFICANT INTACT ELEMENTS:</b> FORM. FACADE. VERANDAH. ROOF FORM. GABLE DECORATION. EAVES DECORATION. VERANDAH DECORATION. CHIMNEYS. WINDOWS. CONTEXT Nos: 110, 112 & 114.	
<b>SIGNIFICANCE:</b>	
<b>TYPE:</b>	HISTORICAL. ARCHITECTURAL.
<b>LEVEL:</b>	LOCAL.
<b>DESIGNATION EXISTING:</b>	PLANNING SCHEME.
<b>RECOMMENDED CONTROL:</b>	PLANNING SCHEME.
<b>SURVEY:</b> RP	<b>DATE:</b> 8.2.1997 <b>NEGS:</b> 7.24 & 1274.33



*Richard Peterson Architect & Conservation Consultant 1997.*

**HISTORY:** Parnell and Sons also owned the land at 116 Prospect Road, along with that at 110, 112 and 114, before subdivision. The timber four-roomed cottage was constructed in 1885 for Frederick Miles, a carpenter. Miles lived and owned the cottage until it was sold to Elizabeth Hales sometime before 1900, when it was occupied by Henry French. In 1910 Margaret Douglas occupied the house, still owned by Elizabeth Hales, but by 1920 it had been purchased by Reginald Brownhill, a printer, who still owned and occupied the house in 1940.<sup>1</sup>

**VISUAL DESCRIPTION:** A double-fronted timber hipped roof Late Victorian house, altered in the 1920s. The left bay is set forward as gable, now with timber shingles over a roughcast belly. Then, a fine ogee arch valance, that continues over the eaves. It has a tripartite window with an architrave of square and oblong panels. The right window is similar, but with discs.

The verandah from the 1920s is flat-roofed, supported on concave brackets, over post pairs on piers. The entrance has side and fan-lights. Both chimneys are rendered with fine Classical mouldings.

**SIGNIFICANCE:** A Late Victorian timber house built by Parnell & Sons in 1885 and altered in the 1920s. It is architecturally significant locally as characteristic of its period and of Parnell's work and historically significant as evocative of late Victorian life in Newtown.

**INTACTNESS:** Very good (as altered). The high fence and gate are not appropriate. Upper gable shingles, verandah and balustrade are from the 1920s.

**CONDITIONS & THREATS:** Fair only. Needs some maintenance.

---

<sup>1</sup> City of Newtown and Chilwell Rate Books