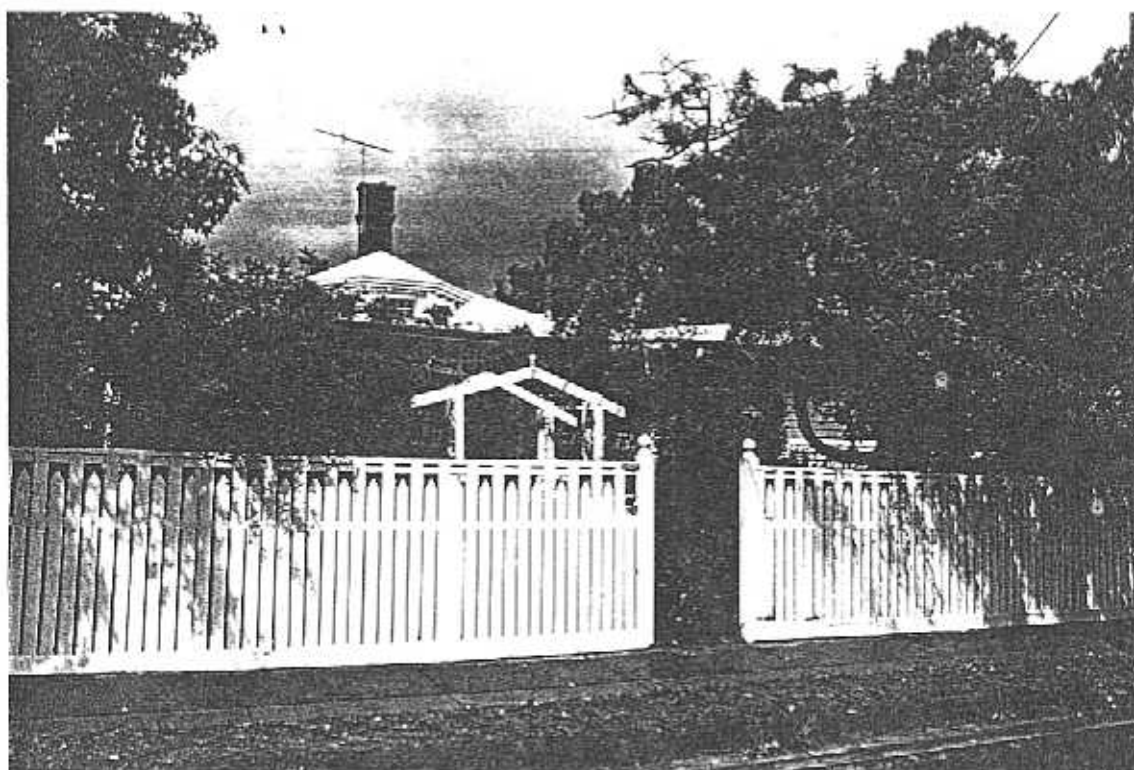
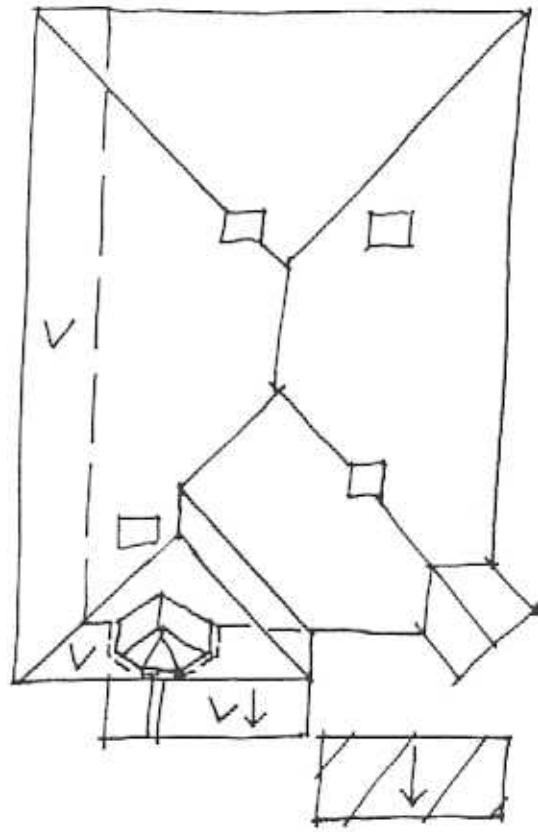
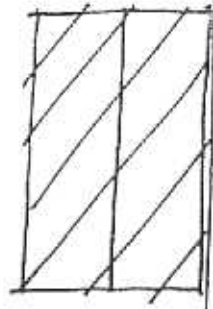


**NEWTOWN URBAN CONSERVATION STUDY. - 'C' CITATIONS. Ref: 141**  
 Richard Peterson Architect & Conservation Consultant. 1997.

<b>NAME:</b> —			
<b>PREVIOUS NAME:</b>		Eurymina	
<b>ADDRESS:</b>		93 Prospect Road	
<b>USE:</b> House			
<b>SIGNIFICANT DATE:</b>		<b>CONSTRUCTION DATE:</b> 1902	<b>SOURCE:</b> 1
<b>ALTERATIONS/ADDITIONS.</b>		<b>DATE:</b> 1960s	<b>SOURCE:</b> Visual
<b>DESIGNER:</b> —		<b>BUILDER:</b> —	
<b>CRITERIA:</b> H1; Ar1.		<b>HISTORIC THEME:</b> 2.3	
<b>DESCRIPTION:</b>	<b>STYLE:</b> Late Vic'n	<b>STORIES:</b> 1	<b>DETACHED.</b>
<b>MATERIALS:</b>	<b>WALLS:</b> Timber	<b>ROOF:</b> Zincalume	<b>STRUCTURE:</b> Stud
<b>CONDITION:</b> Very good	<b>INTACTNESS:</b> Good	<b>THREATS:</b> —	
<b>SIGNIFICANT INTACT ELEMENTS:</b>			
FORM. FACADE. VERANDAH. ROOF FORM. GABLE DECORATION. EAVES DECORATION. VERANDAH DECORATION. CHIMNEYS. DOORS. WINDOWS. CONTEXT			
No: 142.			
<b>SIGNIFICANCE:</b>			
<b>TYPE:</b>		HISTORICAL. ARCHITECTURAL.	
<b>LEVEL:</b>		LOCAL.	
<b>DESIGNATION EXISTING:</b>		PLANNING SCHEME.	
<b>RECOMMENDED CONTROL:</b>		PLANNING SCHEME.	
<b>OBSCURED.</b>	<b>SURVEY:</b> RP	<b>DATE:</b> 8.2.1997	<b>NEGS:</b> 7.7 & 1274.19

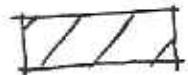


141



No 93

PROSPECT ROAD



RECENT

RP. 8.2.97 NTS

*Richard Peterson Architect & Conservation Consultant 1997.*

**HISTORY:** This house was described as an 'unfinished' cottage in 1902. It was constructed for the medical practitioner John Small and, although unfinished, was occupied by the stock and station agent Randolph Howe. In 1910 it was still owned by John Small, but was unoccupied. However by 1920 the widow Alice Small, probably John Small's wife, lived in the eight-roomed timber dwelling which was now called Eurymina. By 1930 the house was owned and occupied by Emily Stone who was a nurse. Sometime between 1930 and 1940 Stone sold a portion of the land - in 1930 it measured 80 feet by 157 feet, but by 1940 had been reduced to 80 feet by 127 feet. Stone still owned the house in 1940, living there with five others.<sup>1</sup>

**VISUAL DESCRIPTION:** A timber Edwardian house with a complex roof, generally triple-fronted. The left bay steps forward as a verandah, which returns at left under the roof. This has a bold latticed catenary-curved valance on turned posts. At front left is a canted bay-window penetrating the verandah as an unusual lantern, with eaves consoles. Its central double-hung window extends with a spandrel panel to floor as an access. At the right angle is a rectangular bay window on the splay. The upper gable jetties forward clad with ripple-iron. Chimneys are dark brown brick with a panelled frieze over corbelled bands.

**SIGNIFICANCE:** Chimneys are comparable to ref. 137.

**INTACTNESS:** The fence, pergola and both out buildings appear recent.

**CONDITIONS & THREATS:** Chimneys need repointing.

---

<sup>1</sup> City of Newtown and Chilwell Rate Books