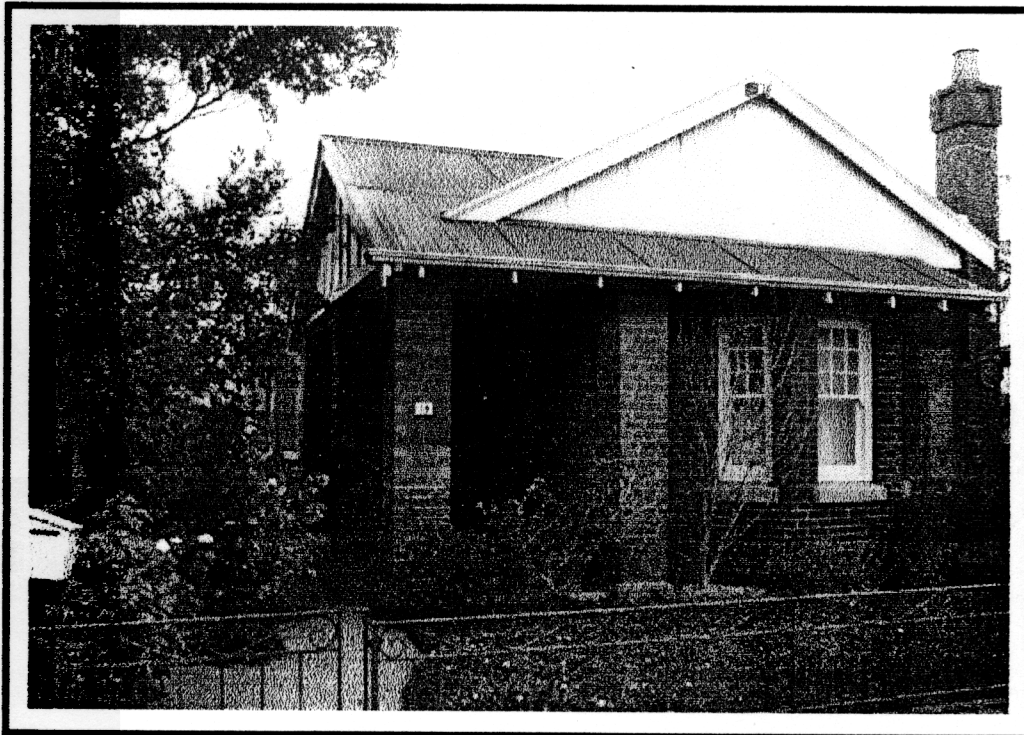
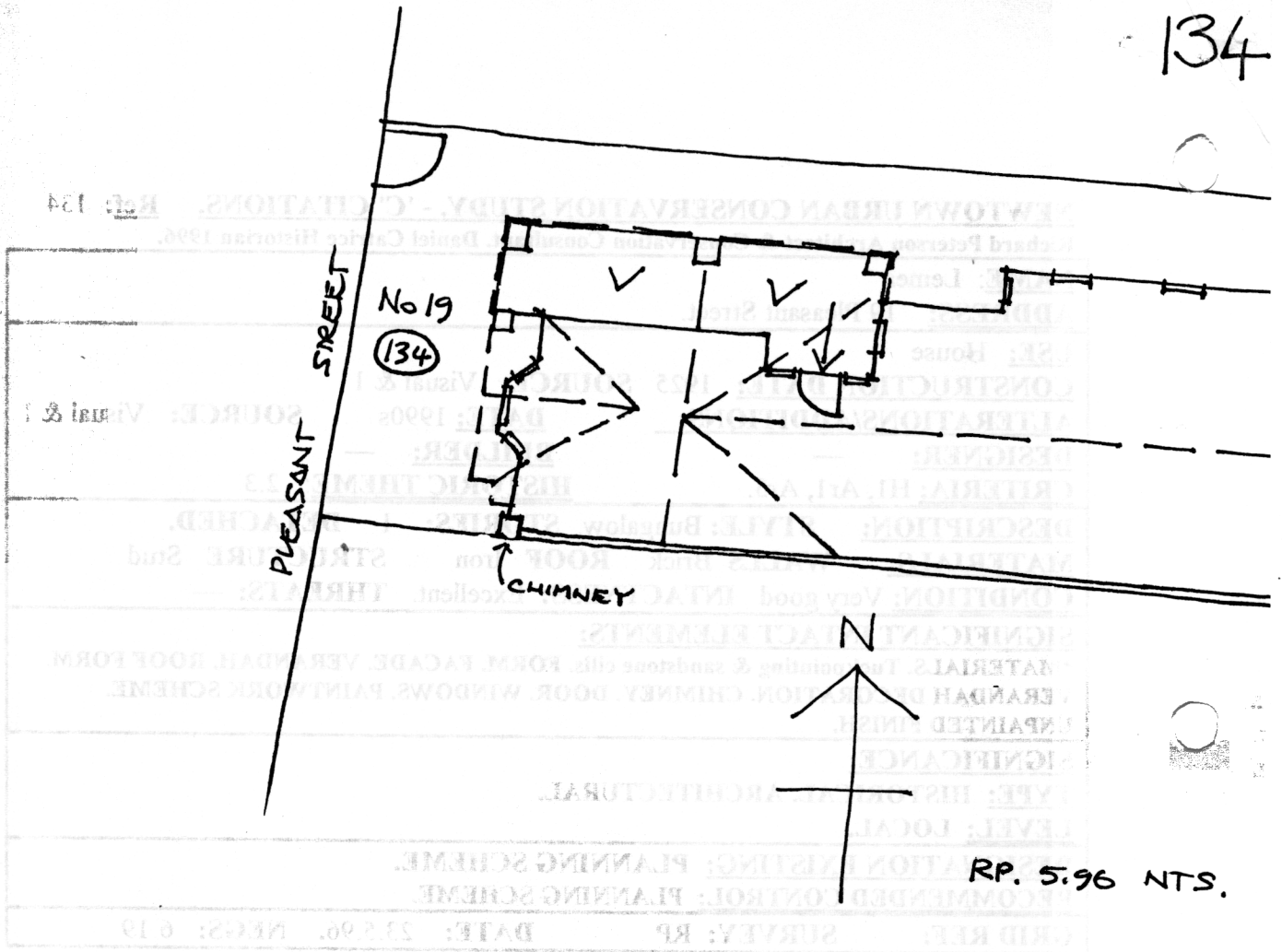


NEWTOWN URBAN CONSERVATION STUDY. - 'C' CITATIONS. Ref: 134
Richard Peterson Architect & Conservation Consultant. Daniel Catrice Historian 1996.

NAME: Lemea		
ADDRESS: 19 Pleasant Street.		
USE: House		
CONSTRUCTION DATE: 1925 SOURCE: Visual & 1		
ALTERATIONS/ADDITIONS: DATE: 1990s SOURCE: Visual & 1		
DESIGNER: — BUILDER: —		
CRITERIA: H1, Ar1, Ar3. HISTORIC THEME: 2.3		
DESCRIPTION: STYLE: Bungalow STORIES: 1 DETACHED.		
MATERIALS: WALLS Brick ROOF Iron STRUCTURE Stud		
CONDITION: Very good INTACTNESS: Excellent. THREATS: —		
SIGNIFICANT INTACT ELEMENTS: * MATERIALS. Tuckpointing & sandstone cills. FORM. FACADE. VERANDAH. ROOF FORM. VERANDAH DECORATION. CHIMNEY. DOOR. WINDOWS. PAINTWORK SCHEME. UNPAINTED FINISH.		
SIGNIFICANCE:		
TYPE: HISTORICAL. ARCHITECTURAL.		
LEVEL: LOCAL.		
DESIGNATION EXISTING: PLANNING SCHEME.		
RECOMMENDED CONTROL: PLANNING SCHEME.		
GRID REF:	SURVEY: RP	DATE: 23.5.96. NEGS: 6.19





HISTORY: This house was built in 1925 for Miss Ada Hobbs.¹

VISUAL DESCRIPTION: A fine, very tightly designed triple-fronted red brick Bungalow with a gabled roof. Most unusually, all brickwork is tuckpointed. The gable is across, with an imposed gable facing at right. The verandah is under the gable at the left side, supported on plain brick piers. This gable forms a hood to the right canted by window. Windows have sandstone cills and unusual chimney, with a recessed panel frieze and terracotta pot, with an unusual scroll-mould at the breast. The verandah has a terrazzo floor. The entrance door is recessed with side and fan-lights. The sash wall is on the boundary.

SIGNIFICANCE: A fine and very tightly designed brick Bungalow built in 1925. It is architecturally significant for the quality and articulation of its design and its idiosyncratic details, such as the stepped fronts, tuckpointing and most unusual chimney. It is historically significant as an eclectic embodiment of a way of life in 1920s Newtown.

INTACTNESS: Excellent.

CONDITION & THREATS: Very good, but there may be rising damp damaging the tuckpointing. Closer inspection is needed.

¹ City of Newtown and Chilwell Ratebooks.