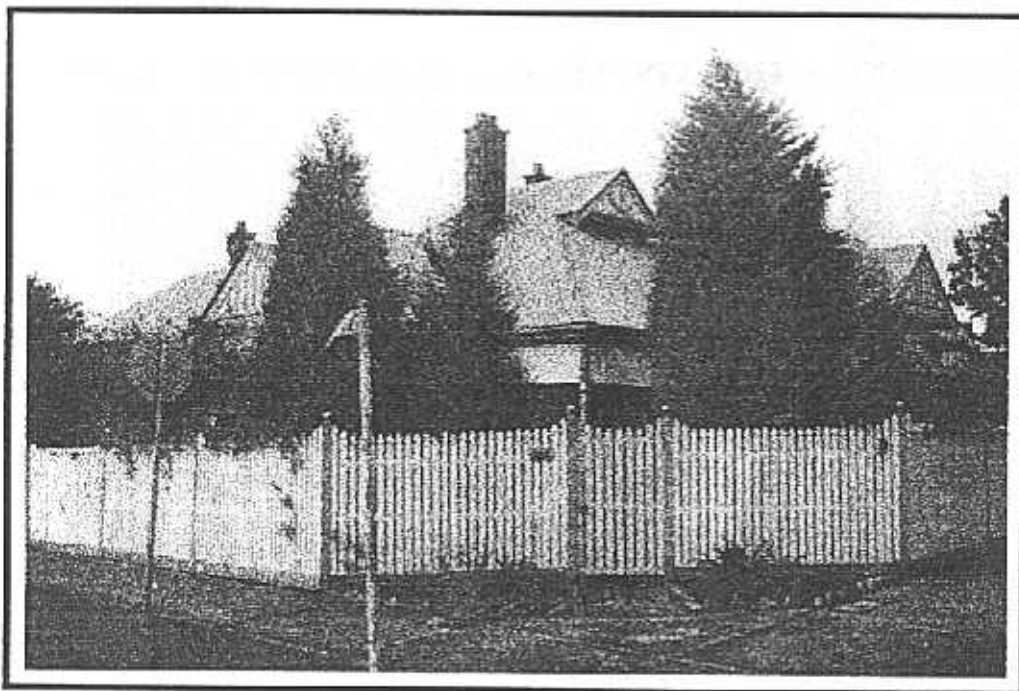


**NEWTOWN URBAN CONSERVATION STUDY. - 'C' CITATIONS. Ref: 129**  
Richard Peterson Architect & Conservation Consultant. Daniel Catrice Historian 1996.

<b>NAME:</b> Evesham		
<b>ADDRESS:</b> 284 Pakington Street (south-east corner Buckland Ave)		
<b>USE:</b> House		
<b>CONSTRUCTION DATE:</b> c1915 <b>SOURCE:</b> Visual & 1		
<b>ALTERATIONS/ADDITIONS:</b>	<b>DATE:</b> 1980s	<b>SOURCE:</b> Visual & 1
<b>DESIGNER:</b> —	<b>BUILDER:</b> —	
<b>CRITERIA:</b> H1, Ar1.	<b>HISTORIC THEME:</b> 2.3	
<b>DESCRIPTION:</b>	<b>STYLE:</b> Bungalow	<b>STORIES:</b> 2 <b>DETACHED.</b>
<b>MATERIALS:</b>	<b>WALLS:</b> Timber	<b>ROOF:</b> Iron <b>STRUCTURE:</b> Stud
<b>CONDITION:</b> Fair <b>INTACTNESS:</b> Excellent <b>THREATS:</b> Maintenance, Traffic.		
<b>SIGNIFICANT INTACT ELEMENTS:</b> FORM. FACADE. VERANDAH. ROOF FORM. GABLE DECORATION. VERANDAH DECORATION. Including screen. CHIMNEYS. DOORS. WINDOWS. SIGN.		
<b>SIGNIFICANCE:</b>		
<b>TYPE:</b> HISTORICAL. ARCHITECTURAL.		
<b>LEVEL:</b> LOCAL.		
<b>DESIGNATION EXISTING:</b> PLANNING SCHEME.		
<b>RECOMMENDED CONTROL:</b> PLANNING SCHEME.		
<b>GRID REF:</b>	<b>SURVEY:</b> RP	<b>DATE:</b> 23.5.96. <b>NEGS:</b> 6.9



**HISTORY:** Samuel Vaughan built this timber dwelling in 1906. The house was leased to Robert Whitehead until the mid-1910s when the property was sold to Alexander Cook. Subsequent owners included Alexander Sutherland and, from mid-1920s, Henry Cox.<sup>1</sup>

**VISUAL DESCRIPTION:** A triple-fronted, timber, gambrel-roofed Edwardian house. Left side rear and right bays project as gables. Upper gables penetrate through the gambrel with pendant barges and timbering on roughcast pattern pressed metal. The upper section is timbered over a deep ogee bellying. Below is a ripple-iron hipped window-hood, on large, deep, ogee brackets on both directions. The gable in the gambrel jettys also. The verandah extends around the angle under the main roof which breaks pitch over it. It has deep pressed metal decorative valence panels, on decorative post-pairs with rails, like ladders. The entry is in the far right front angle with Art Nouveau side and fan lights and glazed door. In front is an unusual glazed screen, in the same pattern, with pressed metal dado in waratah Art Nouveau pattern. Chimneys have brick panels, with unusual render panels and terracotta pots.

**SIGNIFICANCE:** A timber Edwardian house built in 1906. It has architectural significance as a characteristic representative of this domestic style, exhibiting in particular leadlight entrance and screen with nationalistic floral motifs. It is historically significant in evoking the comfortable Edwardian family lifestyle in Newtown and its values.

**INTACTNESS:** Very good. There are inappropriate separate additions at right. The tall picket fence is recent. The verandah floor has been replaced with a slate. A small garden gazebo is recent. It is unclear whether the soffit panels are recent.

**CONDITION & THREATS:** Very good. Traffic pollution and vibration.

---

<sup>1</sup> City of Newtown and Chilwell Ratebooks.